



# HOKKAIDO UNIVERSITY

Faculty of Medicine  
Graduate School of Medicine  
School of Medicine



## Guidebook 2022-2023

# Greetings

Hokkaido University School of Medicine, one of the oldest and most traditional medical schools in Japan, was originally founded in 1919 as Hokkaido Imperial University School of Medicine, and in 2019, it marked its 100th anniversary. To date, the School of Medicine has produced a total of 10,000 graduates, and approximately 6,500 alumni are active in their specialized fields as doctors, medical researchers, and other professionals throughout Japan and around the world.

In 2017, education at the School of Medicine saw a renewal of its clinical clerkships with the cooperation of more than 50 affiliated hospitals in Hokkaido, in order to enhance clinical practice in the fifth and sixth years. To promote further reform of medical education, it has established a curriculum committee with the participation of students, where students and faculty are working together to reform the interactive education system. These implementations conform to the international accreditation standards set by the Japan Accreditation Council for Medical Education. The School of Medicine underwent evaluation for the international accreditation in 2021. With its medical education assured from an international standpoint, we expect to further propel the overseas study program and the graduates' international activities in the medical field.

Hokkaido University Graduate School of Medicine, originally established in 1955, was reorganized in 2017 to flexibly produce medical personnel who can respond to the changing demands of society. Through this reorganization, the “Graduate School of Medicine”, which had integrated educational and research organizations, was divided into two organizational entities: the “Graduate School of Medicine”, to which graduate students belong, and the “Faculty of Medicine”, to which faculty members belong. This has enabled us to create a global graduate education system that can respond organically to society and students. In this reorganized system, the faculty members of the Faculty of Medicine and other institutions within the University work together to conduct the world's most advanced research, thereby providing a high-quality educational environment for the graduate students of the Graduate School of Medicine studying under them. In this way, we can expect the development of both “the graduate students as the Graduate School of Medicine” and “the faculty as the Faculty of Medicine”. At the University, the execution of cutting-edge research at the Graduate School of Medicine is essential to the provision of education, which also contributes to the philosophy of the Graduate School of Medicine: “to lead the world with cutting-edge research in medical science, and to equip the next generation of medical researchers and medical professionals with a strong sense of ethics and a well-rounded character to contribute to the health and welfare of humanity”. By having graduate students of the Graduate School of Medicine receive education under the faculty members affiliated with the Faculty of Medicine who are at the forefront of research, we can expect to “help students develop advanced levels of knowledge and research skills in the fields of medical and life sciences and profound insights that meet the needs of society”, which is the educational goal of the Graduate School of Medicine.

In the midst of the drastic changes in the social environment surrounding universities, including the current pandemic disaster of COVID-19, we will continue to work for the further development of the School of Medicine, the Graduate School of Medicine, and the Faculty of Medicine, with a view to the future prospects of education, research, and medical care.

HATAKEYAMA Shigetsugu, M.D., Ph.D.

Dean

Faculty of Medicine and Graduate School of Medicine/  
School of Medicine, Hokkaido University





# Contents

•Greetings .....	1
•Contents .....	2
•History .....	3~5
•Philosophy and Objectives .....	6~10
Philosophy and Objectives	
Admissions Policy	
Diploma Policy	
Curriculum Policy	
Assessment Policy	
•Past and Present Deans and Directors	
Deans of School of Medicine .....	11
Deans of Graduate School of Medicine	
Dean of Faculty of Medicine	
Dean of Graduate School of Medicine	
Directors of Medical Clinic / Medical Hospital .....	12
Directors of Hokkaido University Hospital	
•Professors Emeriti .....	13
•Honor Roll .....	14
•Organizations / Finances	
Organizational Chart	
Faculty of Medicine .....	15
Graduate School of Medicine .....	15
School of Medicine .....	16
Administration Office .....	16
Executives of Faculty Council and Administration Office .....	17
Number of Staff .....	18
Organizational Structure .....	18
Departments at a Glance	
Faculty of Medicine .....	19
Graduate School of Medicine .....	20
Professors and Research Fields .....	21~28
Centers and Facilities	
Center for Medical Education and International Relations .....	29.30
Research Center for Cooperative Projects "Frate" .....	31
Institute for Animal Experimentation .....	32
Library, School of Medicine .....	32
Medical and Dental Research Building .....	33
Interprofessional Education and Research Building .....	33
Hokkaido University Hospital .....	34
Global Center for Biomedical Science and Engineering .....	35

Educational and Research Support	
Public Relations Office .....	36
Research Strategy Office .....	36
Public Relations	
Official Publications .....	37
Press Release .....	37
Awards .....	38
Total Revenue and Expenditure in Fiscal 2021 .....	39
Grants-in-Aid for Scientific Research, etc. ....	39
•Students	
Number of Students .....	40
Number of Enrolled Students .....	40
Number of Graduates (Degrees Granted) .....	41
Post-graduation Statistics .....	42
National Examination for Medical Practitioners Results .....	42
"Frate" Activities .....	43.44
•International Affairs	
Number of International Students .....	45
International Academic Exchanges .....	46
•Endowed Departments and Industry Creation Departments	
Endowed Departments .....	47
Industry Creation Departments .....	47
•Education and Research System	
Master's Program, Graduate School of Medicine .....	48
Doctoral Program, Graduate School of Medicine .....	48
Special Programs on the Doctoral Program .....	49.50
Honor and Scholarship (Graduate School of Medicine) .....	51.52
Outline of School of Medicine Courses .....	53
Cooperative Projects between Industry and Academia .....	54
Education and Research Programs .....	55~57
Autopsy Numbers .....	58
Record of Postmortem imaging .....	58
•Campus	
Lands and Buildings .....	59
Building Layout .....	59
Building / Floor Overview .....	60
Map of Sapporo Campus .....	61
Access to Sapporo Campus .....	62

# History

Data as of July 1, 2022

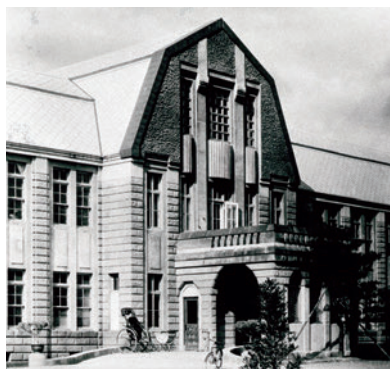
- Development related to establishment and reorganization
- Development related to past and present Deans of the School of Medicine, the Graduate School of Medicine (before/after reorganization) and the Faculty of Medicine, and Directors of Hokkaido University Hospital
- ▶ Others

- Apr. 1, 1919 ■ Hokkaido Imperial University School of Medicine established.
- Apr. 22, 1921 ■ Hokkaido University Medical Clinic established.
- May 17, 1921 ● HATA Benzo appointed as Dean of the School of Medicine and Director of Hokkaido University Medical Clinic
- Oct. 1, 1921 ■ Hokkaido University Medical Clinic's Midwives' Training Institute established.
- Oct. 8, 1921 ● ARIMA Eiji appointed as Director of Hokkaido University Medical Clinic
- Mar. 14, 1925 ● OCHI Sadami appointed as Director of Hokkaido University Medical Clinic
- Oct. 7, 1925 ● KON Yutaka appointed as Dean of the School of Medicine
- Mar. 13, 1929 ● KOSOGABE Hisashi appointed as Director of Hokkaido University Medical Clinic
- Mar. 31, 1929 ● YAMAZAKI Haruo appointed as Dean of the School of Medicine
- Mar. 10, 1931 ● NAKAMURA Yutaka appointed as Dean of the School of Medicine
- Mar. 11, 1931 ● OHNO Seishichi appointed as Director of Hokkaido University Medical Clinic
- Oct. 17, 1931 ▶ Ceremony to commemorate the 10th anniversary of the School of Medicine
- Mar. 10, 1933 ● MIWA Makoto appointed as Dean of the School of Medicine
- Mar. 11, 1933 ● NAGAI Kazuo appointed as Director of Hokkaido University Medical Clinic
- Oct. 31, 1933 ● YAMAGAMI Kumao appointed as Dean of the School of Medicine
- Dec. 16, 1935 ● OHNO Seishichi appointed as Dean of the School of Medicine
- Dec. 17, 1935 ● SHIGA Ryo appointed as Director of Hokkaido University Medical Clinic

- Dec. 16, 1937 ● YAMAZAKI Haruo appointed as Dean of the School of Medicine
- Dec. 17, 1937 ● NAKAGAWA Satoru appointed as Director of Hokkaido University Medical Clinic
- May 15, 1939 ■ Hokkaido Imperial University Special School of Medicine established.
- Dec. 16, 1939 ● NAKAMURA Yutaka appointed as Dean of the School of Medicine
- Dec. 17, 1939 ● YANAGI Soichi appointed as Director of Hokkaido University Medical Clinic
- Dec. 13, 1941 ● MASAKI Takeo appointed as Dean of the School of Medicine
- NISHIKAWA Yoshihide appointed as Director of Hokkaido University Medical Clinic
- Mar. 31, 1943 ● NAGAI Kazuo appointed as Director of Hokkaido University Medical Clinic
- Dec. 13, 1943 ● KODAMA Sakuzaemon appointed as Dean of the School of Medicine
- NAKAGAWA Satoru appointed as Director of Hokkaido University Medical Clinic
- Jun. 16, 1945 ■ Hokkaido University Medical Clinic's Nurses' Training Institute (Women's College of Health and Welfare) established.
- Dec. 28, 1945 ● INOUE Zenjuro appointed as Dean of the School of Medicine
- SARUWATARI Jiro appointed as Director of Hokkaido University Medical Clinic
- 1947 ▶ Ceremony to commemorate the 25th anniversary of the School of Medicine
- Oct. 1, 1947 ■ Imperial University System changed to National University System; Hokkaido Imperial University becomes Hokkaido University.
- Dec. 28, 1947 ● YANAGI Soichi appointed as Dean of the School of Medicine
- IWASHITA Kenzo appointed as Director of Hokkaido University Medical Clinic
- May 31, 1949 ■ National School Establishment Law enacted; Hokkaido University School of Medicine reestablished under the School Education Law; Hokkaido Imperial University Special School of Medicine merged into the Hokkaido University School of Medicine; Hokkaido University Medical Hospital, Noboribetsu Branch Hospital and the Nurses' Training Institute established (affiliated with Hokkaido University School of Medicine).
- Dec. 28, 1949 ● YASUDA Morio appointed as Dean of the School of Medicine
- OKUDA Yoshimasa appointed as Director of Hokkaido University Medical Hospital
- Mar. 31, 1950 ■ Hokkaido University Special School of Medicine abolished.
- Dec. 28, 1951 ● YAMADA Toyoji appointed as Director of Hokkaido University Medical Hospital



Old Main Building of the School of Medicine  
(Hokkaido University Archives Collection)



Main Building of the Medical Clinic (125<sup>th</sup> Anniversary Photo Album of Hokkaido University, 125-062, Hokkaido University Archives Collection)



- Dec.28, 1953 • ANPO Hisashi appointed as Dean of the School of Medicine  
• MIKAMI Jiro appointed as Director of Hokkaido University Medical Hospital
- Apr. 1, 1954 ■ Department of Pharmacy established in the School of Medicine.
- Apr. 1, 1955 ■ Graduate School of Medicine established at Hokkaido University.  
• ANPO Hisashi appointed as Dean of the Graduate School of Medicine
- Aug. 3, 1955 ■ Doctoral Courses established for the Physiology Division, Pathology Division, Social Medicine Division, Internal Medicine Division, and Surgery Division of the Graduate School of Medicine.
- Dec.28, 1955 • TAKASUGI Toshio appointed as Director of Hokkaido University Medical Hospital
- Apr. 1, 1956 ■ School of Medicine's Medical X-Ray Technicians' School and Balneotherapeutic Research Institute established.
- Dec.28, 1957 • TAKEDA Katsuo appointed as Dean of the School of Medicine and the Graduate School of Medicine  
• OGAWA Gen-ichi appointed as Director of Hokkaido University Medical Hospital
- Apr. 1, 1958 ■ Graduate School of Pharmacy established at Hokkaido University.
- Dec.28, 1961 • ANPO Hisashi appointed as Dean of the School of Medicine and the Graduate School of Medicine  
• FUJIYAMA Hidehisa appointed as Director of Hokkaido University Medical Hospital
- Apr. 1, 1962 ■ Hokkaido University Cancer Immunopathology Institute established.
- Dec.28, 1963 • ABE Sanshi appointed as Dean of the School of Medicine and the Graduate School of Medicine  
• SUWA Nozomi appointed as Director of Hokkaido University Medical Hospital
- Apr. 1, 1965 ■ Faculty of Pharmaceutical Science established after separating from the Department of Pharmacy in the School of Medicine.
- Dec.28, 1965 • SHIMA Keigo appointed as Director of Hokkaido University Medical Hospital
- Apr. 1, 1966 ■ Hokkaido University School of Medicine's Sanitary Inspection Technicians' School established.
- Dec.28, 1967 • SUWA Nozomi appointed as Dean of the School of Medicine and the Graduate School of Medicine  
• WAKABAYASHI Masaru appointed as Director of Hokkaido University Medical Hospital
- 1969 ▶ Ceremony to commemorate the 50th anniversary of the School of Medicine (ceremony canceled due to campus strife)
- Apr. 1, 1969 ■ Hokkaido University Cancer Immunopathology Institute becomes the Hokkaido University Cancer Institute.
- Nov.20, 1969 • TANABE Tsuneyoshi appointed as Dean of the School of Medicine and the Graduate School of Medicine  
• YAMADA Naomichi appointed as Director of Hokkaido University Medical Hospital
- May 1, 1970 • TAKAKUWA Eimatsu appointed as Dean of the School of Medicine and the Graduate School of Medicine  
• MIURA Yusho appointed as Director of Hokkaido University Medical Hospital
- Jun. 30, 1971 • YAMADA Naomichi appointed as Director of Hokkaido University Medical Hospital
- Jul. 17, 1971 • MIURA Yusho appointed as Director of Hokkaido University Medical Hospital
- May 1, 1972 ■ Hokkaido University Institute for Animal Experimentation established.
- Jan. 10, 1976 • MATSUNO Tadahiko appointed as Dean of the School of Medicine and the Graduate School of Medicine  
• SHIRAISHI Tadao appointed as Director of Hokkaido University Medical Hospital
- May 6, 1977 • ONMURA Yuta appointed as Dean of the School of Medicine and the Graduate School of Medicine
- Jan. 10, 1978 • SUGIE Saburo appointed as Director of Hokkaido University Medical Hospital
- Jan. 2, 1979 ▶ Ceremony to commemorate the 60th anniversary of the School of Medicine
- Jan. 10, 1980 • TSUJI Ichiro appointed as Director of Hokkaido University Medical Hospital
- Oct. 1, 1980 ■ College of Medical Technology, Hokkaido University established.
- Jul. 16, 1981 • MIURA Yusho appointed as Dean of the School of Medicine and the Graduate School of Medicine
- Jan. 10, 1982 • MATSUNO Shigeo appointed as Director of Hokkaido University Medical Hospital
- Jul. 16, 1983 • AIZAWA Miki appointed as Dean of the School of Medicine and the Graduate School of Medicine
- Jan. 10, 1986 • TERAYAMA Yoshihiko appointed as Director of Hokkaido University Medical Hospital
- Jul. 16, 1987 • HIROSHIGE Tsutomu appointed as Dean of the School of Medicine and the Graduate School of Medicine  
• MATSUMIYA Hidemi appointed as Director of Hokkaido University Medical Hospital
- Apr. 1, 1989 • TANABE Tatsuzo appointed as Director of Hokkaido University Medical Hospital



Hokkaido University Hospital



Administration Building

- Apr. 1, 1991 • MIYAZAKI Tamotsu appointed as Director of Hokkaido University Medical Hospital
- May 1, 1991 • TANABE Tatsuzo appointed as Dean of the School of Medicine and the Graduate School of Medicine
- Apr. 1, 1993 • SAITO Kazuo appointed as Dean of the School of Medicine and the Graduate School of Medicine  
• OHURA Takehiko appointed as Director of Hokkaido University Medical Hospital
- Oct. 12, 1993 ■ Medical Hospital building completed.
- Jun. 24, 1994 ■ Balneotherapeutic Research Institute closed and the Department of Rehabilitation and Physical Medicine established.
- Oct. 8, 1994 ▶ Ceremony to commemorate the 75th anniversary of the School of Medicine
- Apr. 1, 1995 • ABE Hiroshi appointed as Director of Hokkaido University Medical Hospital
- May 11, 1996 ■ Hokkaido University Noboribetsu Branch Hospital closed.
- Apr. 1, 1997 • INOUE Yoshiro appointed as Dean of the School of Medicine and the Graduate School of Medicine  
• KAWAKAMI Yoshikazu appointed as Director of Hokkaido University Medical Hospital
- Apr. 9, 1998 ■ Division of Physiological Science and the Division of Neurological Science established at the Graduate School of Medicine.
- Apr. 1, 1999 ■ Division of Advanced Medical Science and the Division of Social Medicine established at the Graduate School of Medicine.  
• FUJIMOTO Seiichi appointed as Director of Hokkaido University Medical Hospital
- Apr. 1, 2000 ■ Division of Pathophysiological Science and the Division of Cancer Medicine established at the Graduate School of Medicine. Reform completed to the Graduate School Priority System. Institute for Genetic Medicine established after reorganization of the Cancer Institute and the Institute of Immunological Science.
- Apr. 1, 2001 • NISHI Shinzo appointed as Dean of the School of Medicine and the Graduate School of Medicine  
• KATO Hiroyuki appointed as Director of Hokkaido University Medical Hospital
- Apr. 1, 2002 ■ Master's Program for Medical Research was transferred from the School of Medicine to the Graduate School of Medicine.
- Apr. 1, 2003 • SUGIHARA Tsuneki appointed as Director of Hokkaido University Medical Hospital (Hokkaido University Hospital from October onward)
- Oct. 1, 2003 ■ Faculty of Health Sciences established at the School of Medicine. Medical Hospital and Dental Hospital integrated into the Hokkaido University Hospital.



Institute for Animal Experimentation

- Jan. 30, 2004 ■ Renovations of the Graduate School of Medicine South Research Building completed.
- Feb. 27, 2004 ■ Medical and Dental Research Building opened for use.
- Apr. 1, 2004 ■ Hokkaido University became the National University Corporation Hokkaido University.
- Mar. 10, 2005 ■ Renovations of the Graduate School of Medicine Southeast Research Building completed.
- Apr. 1, 2005 • HONMA Ken-ichi appointed as Dean of the School of Medicine and the Graduate School of Medicine  
• MIYASAKA Kazuo appointed as Director of Hokkaido University Hospital
- Apr. 1, 2007 ■ All six divisions of the Graduate School of Medicine integrated into the Division of Medicine.  
• ASAKA Masahiro appointed as Director of Hokkaido University Hospital
- Jul. 13, 2007 ■ Renovations of the Graduate School of Medicine Northeast Research Building completed.
- Mar. 28, 2008 ■ Renovations of the Graduate School of Medicine North Research Building completed.
- Mar. 27, 2009 ■ Renovations of the Graduate School of Medicine Central Research Building completed.
- Apr. 1, 2009 • YASUDA Kazunori appointed as Dean of the School of Medicine and the Graduate School of Medicine
- Aug. 13, 2009 ■ Renovations of the Library of the School of Medicine completed.
- Oct. 12, 2009 ▶ Ceremony to commemorate the 90th anniversary of the School of Medicine
- Apr. 1, 2010 • FUKUDA Satoshi appointed as Director of Hokkaido University Hospital
- Jul. 9, 2010 ■ Hokkaido University School of Medicine The Alumni Hall "Frate" opened for use.
- Apr. 1, 2011 • TAMAKI Nagara appointed as Dean of the School of Medicine and the Graduate School of Medicine
- Apr. 1, 2013 • KASAHARA Masanori appointed as Dean of the School of Medicine and the Graduate School of Medicine  
• HOUKIN Kiyohiro appointed as Director of Hokkaido University Hospital
- May 28, 2014 ■ Renovations of Animal Experiment Facility of the Graduate School of Medicine completed.
- Jan. 15, 2016 ■ Renovations of the Interprofessional Education and Research Building completed.
- Apr. 1, 2017 ■ The Graduate School of Medicine was reorganized into the Faculty of Medicine and the Graduate School of Medicine.  
• YOSHIOKA Mitsuhiro appointed as Dean of the Faculty of Medicine and the Graduate School of Medicine/the School of Medicine
- Apr. 1, 2019 • AKITA Hiroto appointed as Director of Hokkaido University Hospital
- Sep. 20, 2019 ■ Hokkaido University School of Medicine Centennial Hall opened for use.
- Oct. 12, 2019 ▶ Ceremony to commemorate the 100th anniversary of the School of Medicine
- Apr. 1, 2021 • HATAKEYAMA Shigetsugu appointed as Dean of the School of Medicine, the Faculty of Medicine and the Graduate School of Medicine
- Apr. 1, 2022 • ATSUMI Tatsuya appointed as Director of Hokkaido University Hospital

For details, see <https://www.med.hokudai.ac.jp/en/general/history.html>



## Philosophy and Objectives

### Philosophy

Hokkaido University Graduate School of Medicine and Hokkaido University School of Medicine lead the world with cutting-edge research in medical science, and aim to equip the next generation of medical researchers and medical professionals with a strong sense of ethics and a well-rounded character to contribute to the health and welfare of humanity.

### Educational and Behavioral Objectives

#### ■ Educational Objective

To help students develop advanced levels of knowledge and research skills in the fields of medical and life sciences and gain profound insights that will help them meet the needs of society.

#### ■ Behavioral Objectives

1. To develop highly specialized knowledge and research skills in the fields of medical and life sciences in order to nurture inquiring minds for in-depth scientific exploration of questions and hypotheses.
2. To develop the skills needed for international promotion of world-leading cutting-edge medical research.
3. To develop the ability and judgment students require to meet diverse and extensive needs related to the public health and safety of local communities and the international community.
4. To instill in students a respect for the sanctity of life so that they can play significant roles in their fields with a strong sense of ethics.

### Research and Behavioral Objectives

#### ■ Research Objectives

To promote world-leading research in the school in its role as part of a major Japanese university and to advance knowledge frontiers for the prosperity of humanity.

#### ■ Behavioral Objectives

1. To contribute to the development of unique, pioneering basic research.
2. To promote clinical medicine and social medicine as areas of practical study serving society.
3. To implement translational research from the field of basic medicine to that of clinical medicine.
4. To collaborate with other related departments on campus, other universities and the business community by drawing on the characteristics of university status, and to promote world-leading medical research.

## Admissions Policy

### Expectations of Students

1. Students who are willing to be engaged in research tailored to clarify life phenomena, to overcome diseases, and to improve human health standards
2. Students who have intellectual curiosity, show the ability to analyze things logically, persevere as a team, and aspire to work as international leaders in each medical field
3. Students who have fundamental reading comprehension in foreign language (English) and writing skills before enrollment

#### Basic Policy for Entrant Selection

In the general examination, students are selected based on the comprehensive evaluation of the results of written achievement tests and the content of the submitted application documents.

In the special selection examination for international applicants, students are selected based on the comprehensive evaluation of an oral interview examination and the content of the submitted application documents.

(The evaluation methods and the evaluation weight and the relationship between Expectations of Students and the evaluation methods)

(Master's)

Entrance exam classification	Evaluation method	Evaluation weight	Matters related to ①	Matters related to ②	Matters related to ③
general examination	Essay	◎	✓	✓	
	Specialized subject	◎	✓	✓	
	English	◎			✓
	Application Documents	○	✓	✓	
general examination [Public Health Course] (Two-Year Course)	Essay	◎	✓	✓	
	Specialized subject	◎	✓	✓	
	English	◎			✓
	Application Documents	○	✓	✓	
general examination [Public Health Course] (One-Year Course)	Essay	◎	✓	✓	
	Specialized subject	◎	✓	✓	
	English	◎			✓
	Oral Examination	◎	✓	✓	
Special Selection for International Applicants	Application Documents	○	✓	✓	
	Oral examination	◎	✓	✓	✓

(Doctoral)

Entrance exam classification	Evaluation method	Evaluation weight	Matters related to ①	Matters related to ②	Matters related to ③
general examination	Specialized subject	◎	✓	✓	
	English	◎			✓
	Application Documents	○	✓	✓	
Special Selection for International Applicants	Oral examination	◎	✓	✓	✓
	Application Documents	○	✓	✓	

The mark ◎ indicates elements that are particularly important

The mark ○ indicates elements that are important

✓ is the Expectations of Students evaluated in the each evaluation methods

# Diploma Policy

Under the basic philosophies of Hokkaido University, “Frontier Spirit”, “Global Perspectives”, “All-round Education” and “Practical Learning”, educational goals of the Graduate School of Medicine aim to nurture individuals who possess high ethical standards, highly specialized knowledge, and research and teaching capabilities, as well as the deep insight to meet the demands of health and safety requirements from local and international community. The Graduate School of Medicine defines the abilities required of students in Master's Program and Doctoral Program, and grants the diploma to those who have attained these abilities and completed academic requirements.

## Master's Program in Medical Science

### ● Master of Medical Science

We grant Master of Medical Science to those who have attained the competencies to continuously contribute to the development of medical and life science research field by understanding the backgrounds of the medical and life science research, making plans for research theme of biologic importance or hypotheses to be validated, analyzing the obtained experimental or research results through verification of the validity and preparing another theme or hypotheses. In addition, students should acquire predefined credits and pass the qualifying review and examination of the Master's thesis.

### ● Master of Public Health

We grant Master of Public Health to those who have attained the competencies to continuously contribute to the development of public health field setting further measure against newly generated challenges through understanding the mechanism necessary for entire society and people's health, life and security and planning measures to maintain or improve health by collecting or analyzing the information necessary to solve the issues of public health or preventive medicine, as well as through putting those measures into execution effectively and evaluating the obtained results appropriately. In addition, students should acquire predefined credits and pass the qualifying review and examination of the Master's thesis or research achievements of specific assignment. In addition, students should acquire predefined credits and pass the qualifying review and examination of the Master's thesis or research achievements of specific assignment.

## Degree-granting level - Master's Program

Based on the educational goals of the Graduate School of Medicine, in the Master's Program, we aim to nurture individuals who have basic knowledge and skills to carry out activities to contribute to their own field, as researchers and educators in medical and life science fields, as highly specialized professionals in medical related fields, or as experts in healthcare and health policy management. We grant the Master of Medical Sciences diploma to those who have attained the following abilities.

- 1) Understanding and fair evaluation of current and prior knowledge related to one's research, and ability to make one's own logical statement
- 2) Abilities to perform research planning, collection and analysis of scientific data, and logical thinking based on scientific data, understand that all experiments and observations include errors, and evaluate reliability and reproducibility of results as a scientist
- 3) Presentation skills to discuss one's research in academic conferences or other public events
- 4) Ability to write for academic journals

## Doctoral (PhD) Program in Medicine

## Degree-granting level - Doctoral Program

The Graduate School of Medicine, in the Doctoral Program, we grant Doctor of Philosophy to those who have attained the following competencies to continuously contribute to the development of basic medicine, clinical medicine, or social medicine research, through properly understanding the backgrounds or circumstances of medical research, making plans for research theme which are academically and internationally significant or hypotheses which should be validated, analyzing the obtained results through verification of the validity and preparing another theme or hypotheses. In addition, students should acquire predefined credits and pass the qualifying review and examination of the Degree thesis (Dissertation).

- 1) Understanding and fair evaluation of current and prior knowledge related to one's research, and ability to make one's own logical statement
- 2) Abilities to perform research planning, collection and analysis of scientific data, and logical thinking based on scientific data, understand that all experiments and observations include errors, and evaluate reliability and reproducibility of results as a scientist
- 3) Presentation skills to discuss one's research in academic conferences or other public events
- 4) Ability to write for publication in academic journals, and make meaningful contribution to the research field or the society.

# Curriculum Policy

Educational Philosophies of the Graduate School of Medicine is “cultivation of high ethical standards and rich humanity, as well as acquisition of advanced medical knowledge and technology”. Beyond the boundaries of existing academic disciplines, we offer interdisciplinary education aiming at the acquisition of basic knowledge and technology of mutually related fields. In addition, to nurture talented individuals answering the diversified social needs, we introduce the coursework to study systematically through multiple subjects. Students choose the course suits best to their purpose. We implement the graduate education of the new era with emphasis on the [clarification of purpose] and [substantiation of education] in the Graduate School of Medicine.

## Curriculum Policy - Master's Program

The following three courses are offered in the Master's Program. Students are allocated to courses based on their preference.

### 1. Medical Science Course

This course aims to train high level professionals with wide medical knowledge who play active roles in medical fields.

### 2. Public Health Course (Two-Year Course)

This course aims to train human resources who are capable of playing active roles in addressing the challenges of public health with broad knowledge and high skills for the maintenance and improvement of the entire society and people's health, life and security.

### 3. Public Health Course (One-Year Course)

This course is intended for medical doctors, dentists, pharmacist and other professionals with a certain amount of practical experiences, and aims to train, in one year, highly specialized professionals who are capable of playing active roles in medical and public health fields.

In the Master's Program in Medical Science, Required Core Subjects, Required Subjects I, Required Subjects II, and Elective Subjects are offered.

“Required Core Subjects” are offered to cultivate the basic quality in the education at the Graduate School of Medicine, and are compulsory in all courses. “Required Core Subjects” include “Introduction to Basic Medical Research” to provide basic and systematic knowledge of medical research, “Basic Experimental Methods and Research Designs” to master designing of research, basics of epidemiology and biostatistics and so on. In line with “All-round Education”, one of educational philosophies of Hokkaido University, students learn “Introduction to Medical Ethics” which cultivates bioethics for those engaged in medicine and “Introduction to Translational Research” which promotes the understanding of bridging research aimed at establishing medical technology or pharmaceutical products in the clinical practice utilizing the results gained by basic research.

“Required Subjects I” are the subjects dedicated to the specialty of each course and offered according to the educational goal of each course.

“Required Subjects II” provides the courses aimed at developing skills of statistical analysis, presentation and so on. Furthermore, a supervisor in the laboratory is in charge of “Required Subjects II”, which grants credits to the practice and exercise related to master's thesis or the establishment of the research result of specific assignment.



"Elective Subjects" are offered to secure flexibility in selecting credits, and enable students to acquire a broad view and expertise beyond the course and a framework of specialized field.

Public Health Course provides 5 discipline areas of education (Epidemiology, Biostatistics, Social and Behavioral Sciences, Health Services Administration and Environmental Health Sciences) which are set as requirements by accreditation criteria of the Council on Education for Public Health in the United States. Students learn basic subjects at Required Subjects I, which aims at obtaining minimum knowledge and capability required of public health experts and will be conducted under the interdisciplinary educational system by educators specialized in medicine, science and engineering, and humanities and social sciences. "Elective Subjects" are offered to develop expertise regarding extensive and various public health issues, capability for gathering information and proper judgement.

#### Assessment Policy

##### I. Assessment Criteria

1. Concerning academic assessment, based on the abilities required of students (degree-granting level) in the program as stated in the Diploma Policy of the Graduate School, achievement goals shall be set for each course subject, and assessment shall be based on achievement level of the students.
2. No guidelines for grade distribution shall be given for course subjects in the program.
3. It shall be possible to assess students' academic performance on a pass/fail basis only for courses in which classes are conducted as practical training.
4. Every semester, the Student Affairs Committee shall verify that appropriate achievement goals have been set for each course as well as the results of grading based on these goals, and shall request the course instructor to reconsider the achievement goals as necessary.

##### II. Assessment Methods

1. Academic assessment shall be based primarily on examination results, report evaluation, presentation of results, and attitude toward the study.
2. Class attendance may not simply be scored and used for assessment.
3. Students who have attended at least 2/3 of the class sessions shall be eligible for academic assessment.
4. Specific assessment methods shall be determined by the course instructor.

### Curriculum Policy - Doctoral Program

The following three courses are offered in the Doctoral Program. Students are allocated to courses based on their preference.

#### 1. Basic Medicine Course

This course aims to train talented individuals who will become researchers or educators in medical and life science fields.

#### 2. Clinical Medicine Course

This course aims to train talented individuals who will become clinicians with advanced clinical techniques and research capabilities.

#### 3. Social Medicine Course

This course aims to train talented individuals who will play leading roles in the areas of health care and safety in local and international communities.

In the Doctoral (PhD) Program in Medicine, Required Core Subjects, Required Subjects, Elective Subjects are offered.

"Required Core Subjects" are offered to cultivate the basic quality in the education at the Graduate School of Medicine, and are compulsory in all courses. "Required Core Subjects" include "Introduction to Medical Research" (such as studies on intellectual property) to provide basic and systematic knowledge of medical research and "Experimental Methods and Research Designs" to master designing of research, basics of epidemiology and biostatistics. Students develop presentation skills as well as Q&A handling skills in "Scientific presentation and communication", and develop presentation skills and academic paper writing skills in English in "Presentation skills I & II". In line with "All-round Education", one of educational philosophies of Hokkaido University, students learn "Medical Ethics" which cultivates bioethics for those engaged in medicine and "Introduction to Translational Research" which promotes the understanding of bridging research aimed at establishing medical technology or pharmaceutical products in the clinical practice utilizing the results gained by basic research. Those who take Doctoral (PhD) Program in Medicine after completing the Master's Program in Medical Science will be granted as having acquired the credits of the four subjects of Required Core Subjects; "Introduction to Medical Research", "Experimental Methods and Research Designs", "Medical Ethics" and "Introduction to Translational Research".

"Required Subjects" are offered according to the educational goal of each course, to acquire not only in-depth knowledge of specialized research field but also the knowledge of outside extensive fields. Out of three courses of "Required Subjects", students should choose one course to enroll. In addition, research work for doctoral dissertation will be certified as credits. A supervisor in the laboratory will be in charge of the subject and carry out exercises for gaining the necessary ability to complete the dissertation.

"Elective Subjects" are offered to secure flexibility in selecting credits, and enable students to acquire a broad view and expertise beyond the course and a framework of specialized field.

#### Assessment Policy

##### I. Assessment Criteria

1. Concerning academic assessment, based on the abilities required of students (degree-granting level) in the program as stated in the Diploma Policy of the Graduate School, achievement goals shall be set for each course subject, and assessment shall be based on the achievement level of the students.
2. No guidelines for grade distribution shall be given for course subjects in the program.
3. It shall be possible to assess students' academic performance on a pass/fail basis only for courses in which classes are conducted as practical training.
4. Every semester, the Student Affairs Committee shall verify that appropriate achievement goals have been set for each course as well as the results of grading based on these goals, and shall request the course instructor to reconsider the achievement goals as necessary.

##### II. Assessment Methods

1. Academic assessment shall be based primarily on examination results, report evaluation, presentation of results, and attitude toward the study.
2. Class attendance may not simply be scored and used for assessment.
3. Students who have attended at least 2/3 of the class sessions shall be eligible for academic assessment.
4. Specific assessment methods shall be determined by the course instructor.

## Assessment Policy

### Purpose

- (1) Based on the Hokkaido University Assessment Policy, the Graduate School of Medicine shall conduct educational assessment to meet the educational goals provided by the Diploma Policy.

### Implementation System

- (2) The Dean shall be responsible for the educational assessment of the Graduate School of Medicine.
- (3) The educational assessment of the Graduate School of Medicine shall be conducted by the Student Affairs Committee of the Graduate School of Medicine.

### Implementation and Analysis

- (4) The educational assessment of the Graduate School of Medicine shall be conducted using the assessment checklist separately provided.
- (5) Educational reforms based on the results of the assessment shall be made public.
- (6) Personal information relating to education shall be handled in compliance to the rules and regulations of Hokkaido University.

## Philosophy and Objectives

### Philosophy

Hokkaido University Graduate School of Medicine and Hokkaido University School of Medicine lead the world with cutting-edge research in medical science, and aim to equip the next generation of medical researchers and medical professionals with a strong sense of ethics and a well-rounded character to contribute to the health and welfare of humanity.

### Educational and Behavioral Objectives

#### ■ Educational Objective

To equip the next generation of doctors and medical researchers with extensive medical knowledge, a strong sense of ethics, a well-rounded character and the global outlook needed to contribute to advances in medical science and the practice and development of medical care

#### ■ Behavioral Objectives

1. To develop the fundamental medical knowledge and skills students require to become full-fledged doctors and medical researchers
2. To develop habits and attitudes for independent lifelong self-learning
3. To foster creativity based on scientific thinking/judgment and inquiring minds
4. To foster strong sense of ethics and well-round character that doctors and medical researchers require
5. To clarify the importance of international exchanges and develop necessary language skills, medical knowledge and cultural enrichment
6. To clarify the importance of teamwork and the roles of doctors in medical care

## Admissions Policy

### Students We Wish to Admit

- (1) Knowledge and skills  
Students with a strong wish to learn and with basic scholastic abilities to be able to complete a variety of subjects
- (2) Intellect, judgment and expressiveness  
Students with interests in and curiosity about phenomena, possessing comprehensive critical faculties and empathy
- (3) Independence, diversity and cooperativeness  
Students who have positive attitudes and are reliable in cooperating with others
- (4) Sense of duty  
Students who possess a high sense of ethics and a strong sense of responsibility, a spirit to serve with dedication and a humble yet noble sense of duty

## Diploma Policy

Under the basic philosophies of Hokkaido University, “Frontier Spirit”, “Global Perspectives”, “All-round Education” and “Practical Learning”, educational goals of the School of Medicine aim to nurture individuals who are rich in humanity, possess high ethical standards and global perspectives that contribute to the practice and development of medicine, medical care and life sciences by providing a systematic education contributing to the promotion of human health. School of Medicine defines the abilities required of students, and grants diplomas to those who have attained these abilities and completed academic requirements.

### Degree-granting level

Based on the educational goals of the School of Medicine, there are three major educational philosophies: 1) cultivation of high ethical standards and rich humanity that supports medicine, 2) acquisition of advanced medical knowledge and technology, as well as acquisition of customs and attitude to continue lifelong learning, and 3) learning about teamwork to perform advanced medical care in collaboration with other professionals in the medical team. We grant the Doctor of Medicine diploma to those who have attained the following abilities.

- 1) High ethical standards to support medicine and medical care
- 2) Attitude to empathize with distress, fear and pain of patients
- 3) Sense of mission and responsibility to contribute to the social development
- 4) Basic medical knowledge and technology
- 5) Scientific validity, inquiring mind, and creativity
- 6) Customs and attitude to continue lifelong learning
- 7) Understanding of the importance of teamwork and the role of doctor in medical care
- 8) Attitude to learn while teaching juniors
- 9) Understanding of the importance of cross-cultural and international exchange



# Curriculum Policy

In the School of Medicine, in order to achieve the educational goals, we have established Faculty of Medicine to study medicine, and Department of Health Sciences to study nursing, radiological technology, medical technology, physical therapy, and occupational therapy. We implement a systematic educational approach to train professionals and researchers. The undergraduate curriculum (six-years in the Faculty of Medicine, four-years in the Department of Health Sciences) consists of “subjects of general education” and systematic series of “specialized subjects”. For specialized subjects, each faculty defines curriculum policy and designs curriculum to meet their objectives.

## Curriculum Policy of the Faculty of Medicine

In the Faculty of Medicine, we design and implement the following curriculum aiming to nurture individuals who satisfy degree requirements. First-year students study subjects of general education in “Liberal Education Course for Medical Students”. From the second-year, students study specialized subjects for five years until graduation. Students are required to take all three courses: “Basic Medicine Course”, “Clinical Medicine Course”, and “Clinical Clerkship Course” in this order.

### 1. Liberal Education Course for Medical Students

Curriculum in this course is designed for the first-year students to acquire the knowledge and skills required for all students regardless of major, such as high communication skills, understanding of human and social diversity, critical and creative thinking skills, and social responsibility and ethics.

### 2. Basic Medicine Course

This course lasts for one and a half years from the 1st semester of the second-year. Students learn the normal structure and functions of human body (anatomy, histology, imaging anatomy, physiology, biochemistry), disease development mechanism and basic principles of treatment (microbiology, immunology, pathology, basic application of oncology, pharmacology) and health and disease from the viewpoints of population, environment, social system and prevention (hygiene, public health, forensic medicine) as well as the foundation to study medicine (medical English practice).

### 3. Clinical Medicine Course

This course lasts for one year from the 2nd semester of the third-year. Curriculum is designed to learn the basics of internal medicine, surgery, and specialized medicine while getting a multi-dimensional view of various diseases, understanding the patient as a person, and learning the basics of examination, inspection, diagnosis, and treatment. This course includes one-month medical research practice to learn the research methods and thinking skills in the laboratory required for a basic medical researcher or physician scientist. On completion of the course, students take common achievement tests and are evaluated for their knowledge and techniques acquired. Students must pass these tests to proceed to the Clinical Clerkship Course.

### 4. Clinical Clerkship Course

From the 2nd semester of the fourth year, clinical clerkship starts and students are trained in all clinical departments in actual clinical settings. Along with the training, students review problems and questions that arose during training or in the lecture.

For six months from the 2nd semester of the fifth year, students are required to begin their clinical clerkships in core clinical departments.

In the 1st semester of the sixth year, students participate in clinical clerkship in medical departments of their choice. MD-PhD course students may perform basic research in basic science departments of their choice. Students may choose to undertake this training overseas.

Before finishing the course, students must attend lectures in clinical pathology and interprofessional/simulation trainings, to acquire practical skills that will be useful after graduation. At the end of the course, students take the National Examination for Medical Practitioners.

From the fifth-year, the MD-PhD course is offered for those who want to become a basic medical researcher or physician scientist in the future.

# Assessment Policy

## Purpose

(1) Based on the Hokkaido University Assessment Policy, the School of Medicine shall conduct educational assessment to meet the educational goals provided by the Diploma Policy.

## Implementation System

(2) The Dean shall be responsible for the educational assessment of the School of Medicine.

(3) The educational assessment of the School of Medicine shall be conducted by the Student Affairs Committee of the School of Medicine.

## Implementation and Analysis

(4) The educational assessment of the School of Medicine shall be conducted using the assessment checklist separately provided.

(5) Educational reforms based on the results of the assessment shall be made public.

(6) Personal information relating to education shall be handled in compliance to the rules and regulations of Hokkaido University.

## Deans of School of Medicine

Data as of July 1, 2022

Name	Term of Office	Notes
HATA Benzo	May 17, 1921 – Oct. 06, 1925	
KON Yutaka	Oct. 07, 1925 – Mar. 30, 1929	Inaugurated as President in December 1937.
YAMAZAKI Haruo	Mar. 31, 1929 – Mar. 09, 1931	
NAKAMURA Yutaka	Mar. 10, 1931 – Mar. 09, 1933	
MIWA Makoto	Mar. 10, 1933 – Oct. 30, 1933	
YAMAGAMI Kumao	Oct. 31, 1933 – Dec. 15, 1935	
OHNO Seishichi	Dec. 16, 1935 – Dec. 15, 1937	
YAMAZAKI Haruo	Dec. 16, 1937 – Dec. 15, 1939	
NAKAMURA Yutaka	Dec. 16, 1939 – Dec. 12, 1941	
MASAKI Takeo	Dec. 13, 1941 – Dec. 12, 1943	
KODAMA Sakuzaemon	Dec. 13, 1943 – Dec. 27, 1945	
INOUE Zenjuro	Dec. 28, 1945 – Dec. 27, 1947	
YANAGI Soichi	Dec. 28, 1947 – Dec. 27, 1949	
YASUDA Morio	Dec. 28, 1949 – Dec. 27, 1953	
ANPO Hisashi	Dec. 28, 1953 – Dec. 27, 1957	
TAKEDA Katsuo	Dec. 28, 1957 – Dec. 27, 1961	
ANPO Hisashi	Dec. 28, 1961 – Dec. 27, 1963	
ABE Sanshi	Dec. 28, 1963 – Dec. 27, 1967	
SUWA Nozomi	Dec. 28, 1967 – Nov. 19, 1969	

Name	Term of Office	Notes
TANABE Tsuneyoshi	Nov. 20, 1969 – Apr. 30, 1970	◎
TAKAKUWA Eimatsu	May 01, 1970 – Jan. 09, 1972	◎
TAKAKUWA Eimatsu	Jan. 10, 1972 – Jan. 09, 1976	
MATSUNO Tadahiko	Jan. 10, 1976 – May 06, 1977	
ONMURA Yuta	May 06, 1977 – Jul. 15, 1977	◎
ONMURA Yuta	Jul. 16, 1977 – Jul. 15, 1981	
MIURA Yusho	Jul. 16, 1981 – Jul. 15, 1983	
AIZAWA Miki	Jul. 16, 1983 – Jul. 15, 1987	
HIROSHIGE Tsutomu	Jul. 16, 1987 – Apr. 30, 1991	Inaugurated as President in May 1991.
TANABE Tatsuzo	May 01, 1991 – Mar. 31, 1993	
SAITO Kazuo	Apr. 01, 1993 – Mar. 31, 1997	
INOUE Yoshiro	Apr. 01, 1997 – Mar. 31, 2001	
NISHI Shinzo	Apr. 01, 2001 – Mar. 31, 2005	
HONMA Ken-ichi	Apr. 01, 2005 – Mar. 31, 2009	
YASUDA Kazunori	Apr. 01, 2009 – Mar. 31, 2011	
TAMAKI Nagara	Apr. 01, 2011 – Mar. 31, 2013	
KASAHARA Masanori	Apr. 01, 2013 – Mar. 31, 2017	Inaugurated as Interim President in June 2020.
YOSHIOKA Mitsuhiro	Apr. 01, 2017 – Mar. 31, 2021	
HATAKEYAMA Shigetsugu	Apr. 01, 2021 –	

◎ Acting Dean

## Deans of Graduate School of Medicine

(The old Graduate School of Medicine abolished.)

Name	Term of Office	Notes
ANPO Hisashi	Apr. 01, 1955 – Dec. 27, 1957	
TAKEDA Katsuo	Dec. 28, 1957 – Dec. 27, 1961	
ANPO Hisashi	Dec. 28, 1961 – Dec. 27, 1963	
ABE Sanshi	Dec. 28, 1963 – Dec. 27, 1967	
SUWA Nozomi	Dec. 28, 1967 – Nov. 19, 1969	
TANABE Tsuneyoshi	Nov. 20, 1969 – Apr. 30, 1970	◎
TAKAKUWA Eimatsu	May 01, 1970 – Jan. 09, 1972	◎
TAKAKUWA Eimatsu	Jan. 10, 1972 – Jan. 09, 1976	
MATSUNO Tadahiko	Jan. 10, 1976 – May 06, 1977	
ONMURA Yuta	May 06, 1977 – Jul. 15, 1977	◎
ONMURA Yuta	Jul. 16, 1977 – Jul. 15, 1981	
MIURA Yusho	Jul. 16, 1981 – Jul. 15, 1983	

Name	Term of Office	Notes
AIZAWA Miki	Jul. 16, 1983 – Jul. 15, 1987	
HIROSHIGE Tsutomu	Jul. 16, 1987 – Apr. 30, 1991	Inaugurated as President in May 1991.
TANABE Tatsuzo	May 01, 1991 – Mar. 31, 1993	
SAITO Kazuo	Apr. 01, 1993 – Mar. 31, 1997	
INOUE Yoshiro	Apr. 01, 1997 – Mar. 31, 2001	
NISHI Shinzo	Apr. 01, 2001 – Mar. 31, 2005	
HONMA Ken-ichi	Apr. 01, 2005 – Mar. 31, 2009	
YASUDA Kazunori	Apr. 01, 2009 – Mar. 31, 2011	
TAMAKI Nagara	Apr. 01, 2011 – Mar. 31, 2013	
KASAHARA Masanori	Apr. 01, 2013 – Mar. 31, 2017	Inaugurated as Interim President in June 2020.

◎ Acting Dean

## Dean of Faculty of Medicine

(The Faculty of Medicine and the new Graduate School of Medicine established.)

Name	Term of Office	Notes
YOSHIOKA Mitsuhiro	Apr. 01, 2017 – Mar. 31, 2021	
HATAKEYAMA Shigetsugu	Apr. 01, 2021 –	

## Dean of Graduate School of Medicine

Name	Term of Office	Notes
YOSHIOKA Mitsuhiro	Apr. 01, 2017 – Mar. 31, 2021	
HATAKEYAMA Shigetsugu	Apr. 01, 2021 –	



## Directors of Medical Clinic / Medical Hospital

Name	Term of Office	Notes
HATA Benzo	May 17, 1921 – Oct. 07, 1921	◎
ARIMA Eiji	Oct. 08, 1921 – Mar. 13, 1925	
OCHI Sadami	Mar. 14, 1925 – Mar. 12, 1929	
KOSOGABE Hisashi	Mar. 13, 1929 – Mar. 10, 1931	
OHNO Seishichi	Mar. 11, 1931 – Mar. 10, 1933	
NAGAI Kazuo	Mar. 11, 1933 – Dec. 16, 1935	
SHIGA Ryo	Dec. 17, 1935 – Dec. 16, 1937	
NAKAGAWA Satosu	Dec. 17, 1937 – Dec. 16, 1939	
YANAGI Soichi	Dec. 17, 1939 – Dec. 12, 1941	
NISHIKAWA Yoshihide	Dec. 13, 1941 – Mar. 30, 1943	
NAGAI Kazuo	Mar. 31, 1943 – Dec. 12, 1943	
NAKAGAWA Satosu	Dec. 13, 1943 – Dec. 27, 1945	
SARUWATARI Jiro	Dec. 28, 1945 – Dec. 27, 1947	
IWASHITA Kenzo	Dec. 28, 1947 – Dec. 27, 1949	
OKUDA Yoshimasa	Dec. 28, 1949 – Dec. 27, 1951	
YAMADA Toyoji	Dec. 28, 1951 – Dec. 27, 1953	
MIKAMI Jiro	Dec. 28, 1953 – Dec. 27, 1955	
TAKASUGI Toshio	Dec. 28, 1955 – Dec. 27, 1957	
OGAWA Gen-ichi	Dec. 28, 1957 – Dec. 27, 1961	
FUJIYAMA Hidehisa	Dec. 28, 1961 – Dec. 27, 1963	
SUWA Nozomi	Dec. 28, 1963 – Dec. 27, 1965	
SHIMA Keigo	Dec. 28, 1965 – Dec. 27, 1967	

Name	Term of Office	Notes
WAKABAYASHI Masaru	Dec. 28, 1967 – Nov. 19, 1969	
YAMADA Naomichi	Nov. 20, 1969 – Apr. 30, 1970	◎
MIURA Yusho	May 01, 1970 – Jun. 29, 1971	◎
YAMADA Naomichi	Jun. 30, 1971 – Jul. 16, 1971	◎
MIURA Yusho	Jul. 17, 1971 – Jan. 09, 1972	◎
MIURA Yusho	Jan. 10, 1972 – Jan. 09, 1976	
SHIRAISHI Tadao	Jan. 10, 1976 – Jan. 09, 1978	
SUGIE Saburo	Jan. 10, 1978 – Jan. 09, 1980	
TSUJI Ichiro	Jan. 10, 1980 – Jan. 09, 1982	
MATSUNO Shigeo	Jan. 10, 1982 – Jan. 09, 1986	
TERAYAMA Yoshihiko	Jan. 10, 1986 – Apr. 30, 1987	
MATSUMIYA Hidemi	May 01, 1987 – Jul. 15, 1987	◎
MATSUMIYA Hidemi	Jul. 16, 1987 – Mar. 31, 1989	
TANABE Tatsuzo	Apr. 01, 1989 – Mar. 31, 1991	
MIYAZAKI Tamotsu	Apr. 01, 1991 – Mar. 31, 1993	
OHURA Takehiko	Apr. 01, 1993 – Mar. 31, 1995	
ABE Hiroshi	Apr. 01, 1995 – Mar. 31, 1997	
KAWAKAMI Yoshikazu	Apr. 01, 1997 – Mar. 31, 1999	
FUJIMOTO Seiichiro	Apr. 01, 1999 – Mar. 31, 2001	
KATO Hiroyuki	Apr. 01, 2001 – Mar. 31, 2003	
SUGIHARA Tsuneki	Apr. 01, 2003 – Sep. 30, 2003	

Director of Hokkaido University Medical Hospital from May 31, 1949

◎ Acting Dean

## Directors of Hokkaido University Hospital

Name	Term of Office	Notes
SUGIHARA Tsuneki	Oct. 01, 2003 – Mar. 31, 2005	
MIYASAKA Kazuo	Apr. 01, 2005 – Mar. 31, 2007	
ASAKA Masahiro	Apr. 01, 2007 – Mar. 31, 2010	
FUKUDA Satoshi	Apr. 01, 2010 – Mar. 31, 2013	

Name	Term of Office	Notes
HOUKIN Kiyohiro	Apr. 01, 2013 – Mar. 31, 2019	Inaugurated as President in October 2020.
AKITA Hirotooshi	Apr. 01, 2019 – Mar. 31, 2022	
ATSUMI Tatsuya	Apr. 01, 2022 –	



# Professors Emeriti

Data as of November 1, 2022

Name	Department	Date of Awarding
KOBAYASHI Hiroshi	Division of Pathology, Cancer institute	Apr. 01, 1991
NAKAGAWA Shoichi	Internal Medicine II	Apr. 01, 1992
TANABE Tatsuzo	Surgery II	Apr. 01, 1993
MATSUMOTO Shuzo	Pediatrics	Apr. 01, 1994
MAKITA Akira	Division of Biochemistry, Cancer Institute	Apr. 01, 1994
OHURA Takehiko	Plastic Surgery	Apr. 01, 1995
AGISHI Yuko	Rehabilitation and Physical Medicine	Apr. 01, 1995
HIROSHIGE Tsutomu	Physiology I	May 01, 1995
KATO Masamichi	Physiology II	Apr. 01, 1996
SAITO Kazuo	Hygiene and Preventive Medicine	Apr. 01, 1998
OHKAWARA Akira	Dermatology	Apr. 01, 1999
KAWAKAMI Yoshikazu	Internal Medicine I	Apr. 01, 2000
KANNO Morio	Pharmacology / Cellular and Molecular Pharmacology	Apr. 01, 2000
ABE Hiroshi	Neurological Disorder / Neurosurgery	Apr. 01, 2000
HONMA Yukihiko	Health Administration Center	Apr. 01, 2000
ABE Kazuhiro	Anatomy / Cytology and Histology	Apr. 01, 2002
MINAGAWA Tomonori	Pathophysiology / Microbiology	Apr. 01, 2003
KOYANAGI Tomohiko	Advanced Surgery / Renal and Genito-Urinary Surgery	Apr. 01, 2003
TASHIRO Kunio	Neurological Disorder / Neurology	Apr. 01, 2003
ISHIBASHI Teruo	Biochemistry / Molecular Chemistry	Apr. 01, 2004
YOSHIKI Takashi	Pathophysiology / Pathology	Apr. 01, 2004
KOBAYASHI Kunihiro	Reproductive and Developmental Medicine / Pediatrics	Apr. 01, 2004
KITABATAKE Akira	Cardiovascular Medicine and Surgery / Cardiovascular Medicine	Apr. 01, 2004
KATOH Hiroyuki	Cancer Diagnostics and Therapeutics / Surgical Oncology	Apr. 01, 2004
INOUE Yoshiro	Neural Function / Molecular Neuroanatomy	Apr. 01, 2006
MIYASAKA Kazuo	Radiology and Nuclear Medicine / Radiology	Apr. 01, 2007
SAKURAI Tsunetaro	Forensic Medicine and Medical Informatics / Medical Informatics	Apr. 01, 2008
OHNO Shigeaki	Sensory Organ Medicine / Ophthalmology	Apr. 01, 2008
HONMA Ken-ichi	Physiology / Chronophysiology	Apr. 01, 2010
FUKUSHIMA Kikuro	Physiology / Sensorimotor and Cognitive Research	Apr. 01, 2010
KISHI Reiko	Preventive Medicine / Public Health	Apr. 01, 2010
MAEZAWA Masaji	Forensic Medicine and Medical Informatics / Healthcare Systems Research	Apr. 01, 2010
SASAKI Fumiaki	Surgery / Pediatric Surgery	Apr. 01, 2010
KAWAGUCHI Hideaki	Pathology / Pathophysiology and Signal Transduction	Apr. 01, 2011

Name	Department	Date of Awarding
KOIKE Takao	Internal Medicine / Clinical Immunology and Metabolism	Apr. 01, 2011
ASAKA Masahiro	Internal Medicine / Gastroenterology and Hepatology	Apr. 01, 2011
TODO Satoru	Surgery / General Surgery	Apr. 01, 2011
MINAMI Akio	Reconstructive Surgery and Rehabilitation Medicine / Orthopedic Surgery	Apr. 01, 2011
KOYAMA Tsukasa	Neurological Disorder / Psychiatry	Apr. 01, 2011
TAMASHIRO Hidehiko	Preventive Medicine / Global Health and Epidemiology	Apr. 01, 2012
IMAMURA Masahiro	Internal Medicine / Hematology	Apr. 01, 2012
ABUMI Kuniyoshi	Reconstructive Surgery and Rehabilitation Medicine / Spinal Reconstructive Surgery	Apr. 01, 2012
NONOMURA Katsuya	Surgery / Renal and Genito-Urinary Surgery	Apr. 01, 2013
MUSASHI Manabu	Health Care Center	Apr. 01, 2013
SEYA Tsukasa	Microbiology / Microbiology and Immunology	Apr. 01, 2014
MIWA Soichi	Pharmacology / Cellular and Molecular Pharmacology	Apr. 01, 2015
FUJITA Hiroyoshi	Social Medicine / Hygiene and Cellular Preventive Medicine	Apr. 01, 2015
MINAKAMI Hisanori	Reproductive and Developmental Medicine / Obstetrics	Apr. 01, 2015
SAKURAGI Noriaki	Reproductive and Developmental Medicine / Reproductive Endocrinology and Oncology	Apr. 01, 2015
FUKUDA Satoshi	Sensory Organ Medicine / Otolaryngology-Head and neck Surgery	Apr. 01, 2015
NISHIMURA Masaharu	Internal Medicine / Respiratory Medicine	Apr. 01, 2016
TAMAKI Nagara	Radiology and Nuclear Medicine / Nuclear Medicine	Apr. 01, 2016
GANDO Satoshi	Anesthesiology and Critical Care Medicine / Acute and Critical Care Medicine	Apr. 01, 2016
ARIGA Tadashi	Reproductive and Developmental Medicine / Pediatrics	Apr. 01, 2016
YASUDA Kazunori	Reconstructive Surgery and Rehabilitation Medicine / Sports Medicine and Joint Surgery	Apr. 01, 2017
ARIKAWA Jiro	Microbiology / Microbiology and Infectious Diseases	Apr. 01, 2017
IWANAGA Toshihiko	Anatomy / Histology and Cytology	Apr. 01, 2017
SASAKI Hidenao	Neurological Disorder / Neurology	Apr. 01, 2017
MATSUI Yoshiro	Surgery / Cardiovascular and Thoracic Surgery	Apr. 01, 2019
HOUKIN Kiyohiro	Neurological Disorder / Neurosurgery	Apr. 01, 2019
OTAKI Junji	Center for Medical Education and International Relations	Apr. 01, 2019
KASAHARA Masanori	Pathology / Pathology	Apr. 01, 2021
YAMASHITA Hiroko	Breast Surgery	Apr. 01, 2021
SABE Hisataka	Biochemistry / Molecular Biology	Apr. 01, 2022
AKITA Hirotoshi	Internal Medicine / Medical Oncology	Apr. 01, 2022
IKOMA Katsunori	Reconstructive Surgery and Rehabilitation Medicine / Rehabilitation Medicine	Apr. 01, 2022

Lists exclude the deceased

## The Japan Academy Prize

Name	Year	Title	Award for
KON Yutaka	1934 *Imperial Academy Prize	Professor	Research on silver reaction of cells
SHIRATO Hiroki	2022	Professor	Biomedical and Engineering Research on Real-time Tumor Tracking Radiotherapy/Particle Beam Therapy against Cancer

## Medal of Honor with Purple Ribbon

Name	Year	Title	Award for
HIRAI Hidematsu	1981	Professor	Immunochemical studies on cancer
KOBAYASHI Hiroshi	1990	Professor	Pathology research

## Imperial Invention Prize

Name	Year	Title	Award for
SHIRATO Hiroki	2017	Professor	Development of a real-time tumor-tracking particle beam therapy system

## Minister of Education, Culture, Sports, Science and Technology Award

Name	Year	Title	Award for
SHIRATO Hiroki	2015 (13th award)	Professor	Development and promotion of a real-time tumor-tracking proton beam therapy system for pinpoint irradiation of tumors in motion

## Hokkaido Science and Technology Award

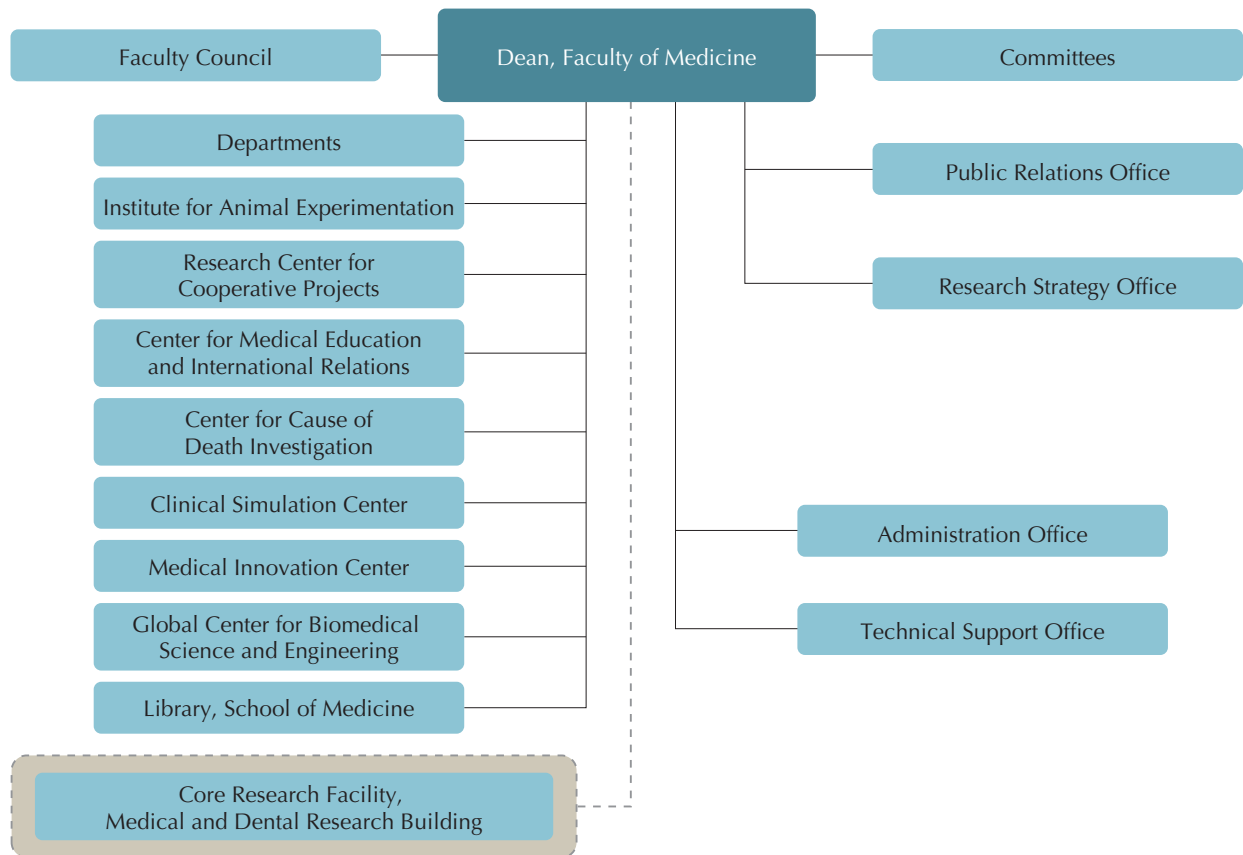
Name	Year	Title	Award for
ITO Shinji	1967 ( 8 th award)	Professor	Research on the mechanism of biological metabolic regulation and development in other new fields
WAKABAYASHI Masaru	1970 (11th award)	Professor	New technological development in cancer radiation therapy
TAKAKUWA Eimatsu	1976 (17th award)	Professor	Contribution to enhanced wellbeing in Hokkaido through the development of equipment to evaluate the Function of Concentration Maintenance (TAF)
HIRAI Hidematsu	1980 (21st award)	Professor	Contribution to the development of medical technology through experimental studies on alpha-fetoprotein
AIZAWA Miki	1987 (28th award)	Professor	Contribution to the development of medical science and technology through international pioneering studies on HLA
YASUDA Hisakazu	1990 (31st award)	Professor	Contribution to medical development through initiatives including work to enable early detection of ischemic heart disease
MATSUMOTO Shuzo	1992 (33rd award)	Professor	Contribution to medical development through initiatives including the development of diagnostic criteria for immune deficiency syndromes
MIYAZAKI Tamotsu	1992 (33rd award)	Directors of Medical Hospital	Contribution to medical development through initiatives including the establishment of foundations to prevent tumor recurrence by suppressing tumor cell growth and avoid the development of immunodeficiency diseases
OSATO Toyoro	1994 (35th award)	Professor	Contribution of medical development and enhanced wellbeing in Hokkaido through studies on the mechanism of virus-induced human oncogenesis
KAWAKAMI Yoshikazu	1997 (38th award)	Professor	Contribution to medical development through initiatives including work to enable home oxygen therapy
YOSHIKI Takashi	2004 (45th award)	Professor Emeritus	Development and analysis of an animal model of human T-cell leukemia virus type 1 (HTLV-1) infection
MINAMI Akio	2008 (49th award)	Professor	Contribution to the development of basic and clinical research on upper-limb surgery
ASAKA Masahiro	2010 (51st award)	Professor	Proposal of a new approach for the elimination of gastric cancer fatalities in Japan
SEYA Tsukasa	2013 (54th award)	Professor	A novel pathway for dendritic cell priming: discovery and application to anti-tumor immunotherapy
SHIRATO Hiroki	2014 (55th award)	Professor	Development of and clinical studies on high-precision photon beam therapy and particle beam therapy using stereotactic irradiation, real-time tumor-tracking and other technologies
NISHIMURA Masaharu	2018 (59th award)	Professor Emeritus	Global contribution to research on chronic obstructive pulmonary disease (COPD) and awareness-raising activities in Japan
MATSUI Yoshiro	2019 (60th award)	Professor Emeritus	Development of new surgical treatment for severe cardiac failure and resumption of heart transplantations in Hokkaido
SHIMIZU Hiroshi	2020 (61st award)	Professor Emeritus	Elucidation of the pathophysiology of intractable congenital skin diseases and the development of new treatments for such disorders
AKITA Hirotoshi	2021 (62nd award)	Professor	Development of personalized cancer treatment using companion diagnostics and the construction of cancer genome precision medicine



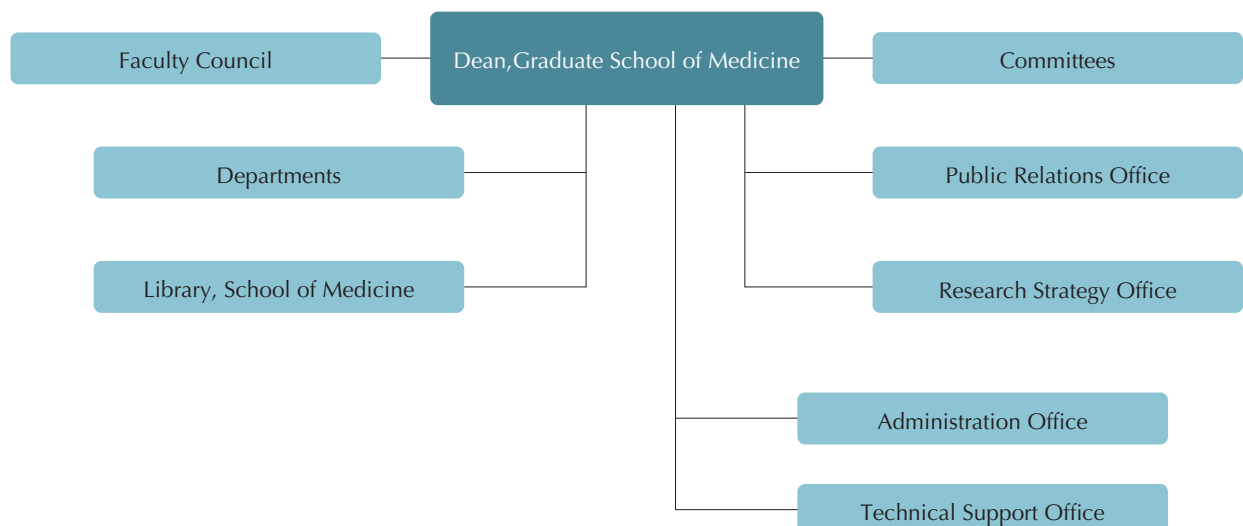
# Organizational Chart

Data as of April 1, 2022

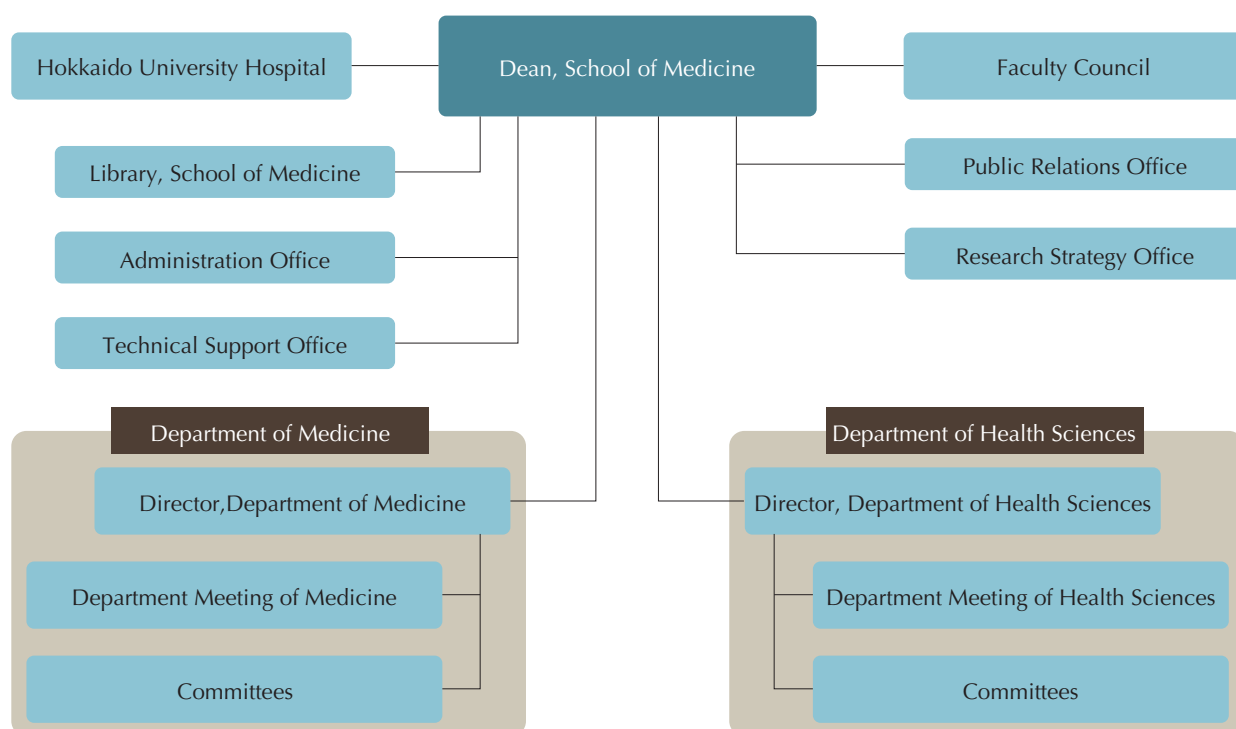
## Faculty of Medicine



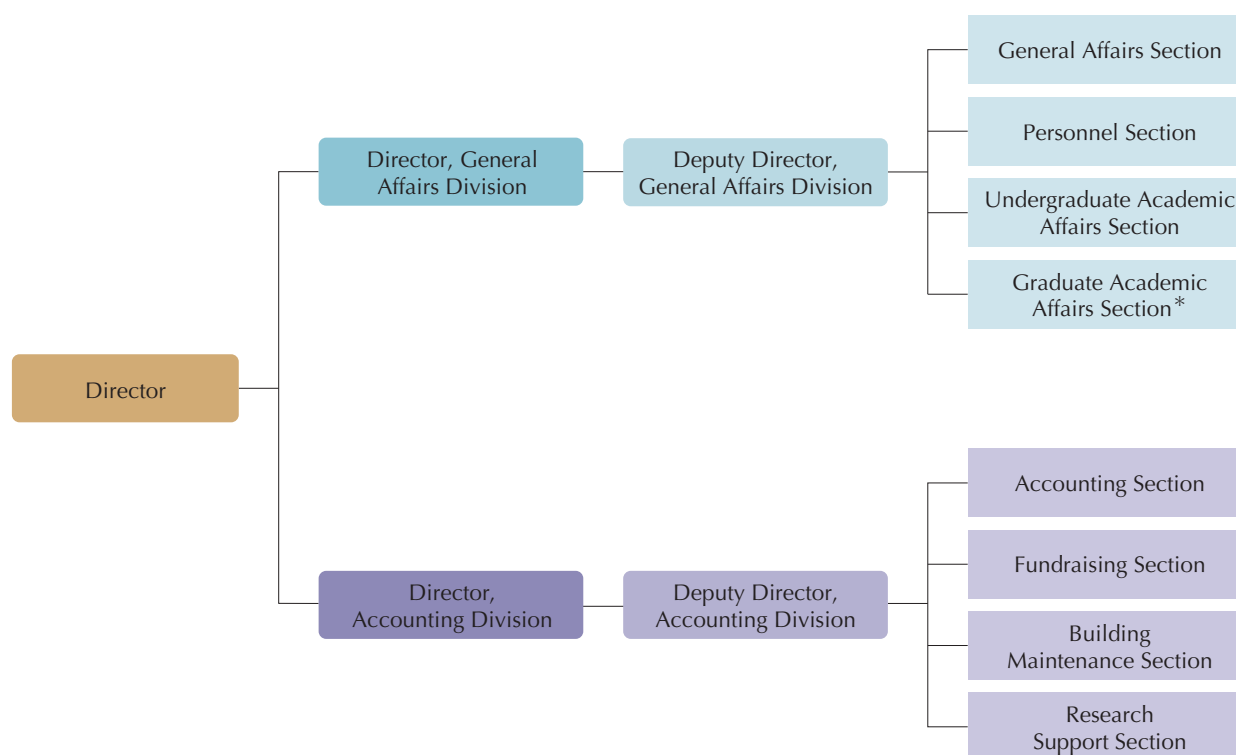
## Graduate School of Medicine



## School of Medicine



## Administration Office (excluding the Library Management Section and the Faculty of Health Sciences' Administrative Division)



\*In charge of the Graduate School of Medicine and the Graduate School of Biomedical Science and Engineering

# Executives of Faculty Council and Administration Office

Data as of July 1, 2022

## School of Medicine

Dean/Director	HATAKEYAMA Shigetsugu
---------------	-----------------------

## Graduate School of Medicine

Dean	HATAKEYAMA Shigetsugu
------	-----------------------

Vice Dean	IWASAKI Norimasa
	TANAKA Shinya

Associate Dean	OHBA Yusuke
	HOMMA Akihiro
	AOYAMA Hidefumi

## Faculty of Medicine

Dean	HATAKEYAMA Shigetsugu
------	-----------------------

Vice Dean	IWASAKI Norimasa
	TANAKA Shinya

Associate Dean	OHBA Yusuke
	HOMMA Akihiro
	AOYAMA Hidefumi

Director of Institute for Animal Experimentation	WATANABE Masahiko
--	-------------------

Director, Research Center for Cooperative Projects	HATAKEYAMA Shigetsugu
--	-----------------------

Director, Center for Medical Education and International Relations	HATAKEYAMA Shigetsugu
--	-----------------------

Director, Center for Cause of Death Investigation	HATAKEYAMA Shigetsugu
---	-----------------------

Director, Clinical Simulation Center	HATAKEYAMA Shigetsugu
--------------------------------------	-----------------------

Director, Medical Innovation Center	HATAKEYAMA Shigetsugu
-------------------------------------	-----------------------

Director, Global Center for Biomedical Science and Engineering	HATAKEYAMA Shigetsugu
--	-----------------------

Director of Library	OHBA Yusuke
---------------------	-------------

Director, Public Relations Office	IWASAKI Norimasa
-----------------------------------	------------------

Director, Research Strategy Office	IWASAKI Norimasa
------------------------------------	------------------

Director, Technical Support Office	HATAKEYAMA Shigetsugu
------------------------------------	-----------------------

Director, Core Research Facility, Medical and Dental Research Building	WATANABE Masahiko
--	-------------------

Director of Hokkaido University Hospital	ATSUMI Tatsuya
--	----------------

## Administration Office

Director	IRISAWA Hidetsugu
----------	-------------------

Director, General Affairs Division	OZAWA Yoshimaro
------------------------------------	-----------------

Director, Accounting Division	OGASAWARA Yoshikatsu
-------------------------------	----------------------

Deputy Director, General Affairs Division	OMOTE Hiroyuki
	TERASHITA Masako

Deputy Director, Accounting Division	IWABE Jun
--------------------------------------	-----------

Chief, General Affairs Section	NAKAHARA Daisuke
--------------------------------	------------------

Chief, Personnel Section	TAKAYAMA Daiki
--------------------------	----------------

Chief, Undergraduate Academic Affairs Section	HATANO Norihiro
---	-----------------

Chief, Graduate Academic Affairs Section (Medicine)	HARADA Naoko
---	--------------

Chief, Graduate Academic Affairs Section (Biomedical Science and Engineering)	YOSHIOKA Hidemi
---	-----------------

Chief, Accounting Section	ABE Masataka
---------------------------	--------------

Chief, Fundraising Section	SAKAGUCHI Kaneyuki
----------------------------	--------------------

Chief, Building Maintenance Section	IIDA Junzi
-------------------------------------	------------

Chief, Research Support Section	KUMASAKA Hiroshi
---------------------------------	------------------

Chief, Library Management Section	HIGUCHI Yoko
-----------------------------------	--------------



# Number of Staff

Data as of May 1, 2022

## Academic Staff

### ■ Graduate School of Medicine Staff

Classification	Number
Professor	35
Associate Professor	27
Lecturer	17
Assistant Professor	58
Research Associate	1
<b>TOTAL</b>	<b>138</b>

Professor*	3
Associate Professor*	5
Lecturer*	3
Assistant Professor*	22
<b>TOTAL</b>	<b>33</b>

Invited Teacher	34
Teaching Staff of Clinical Satellites	60

\* Specially appointed academic staff

### ■ Teaching Staff

Classification	Number
Graduate School of Medicine	284 ( Faculty of Medicine 129 Hokkaido University Hospital 140 Institute for Genetic Medicine 14 Health Care Center 1 )
School of Medicine	347 ( Faculty of Medicine 138 Hokkaido University Hospital 209 )

## Supporting Staff

Classification	Faculty of Medicine	Administration Office
Administrative Staff	–	45
Administrative Assistant (full-time)	32	11
Administrative Assistant (part-time)	61	13
Technical Staff	13	1
Technical Assistant (full-time)	12	–
Technical Assistant (part-time)	43	–
Specialist	3	–
Research Support Assistant	1	–
Postdoctoral Fellow	3	–
Research Fellow	15	–
<b>TOTAL</b>	<b>183</b>	<b>70</b>

## Number of non-Japanese Staff

Academic staff and specially appointed academic staff	Other staff	<b>TOTAL</b>
13	3	<b>16</b>

# Organizational Structure

Data as of June 1, 2022

Faculty of Medicine	7 Divisions / 16 Departments / 10 Endowed Departments / 3 Industry Creation Departments / (43 Laboratories)
Graduate School of Medicine	2 Divisions / 19 Departments / 63 Laboratories (incl. 2 Collaborative Laboratories) / 1 Clinical Collaborative Department (29 Related Facilities)
School of Medicine	1 Department / 26 Academic Subjects

History

Philosophy and Objectives

Past and Present Deans and Directors

Professors Emeriti

Honor Roll

Organizations / Finances

Students

International Affairs

Endowed Depts. and Industry Creation Depts.

Education and Research System

Campus

# Departments at a Glance

Data as of June 1, 2022

## Faculty of Medicine

\* Endowed Departments

■ Industry Creation Departments

Physiological Science	Biochemistry	Molecular Biology
		Medical Chemistry
	Anatomy	Anatomy and Embryology
		Histology and Cytology
	Physiology	Cell Physiology
Pathological Science		Systems Neuroscience
	Pharmacology	Neuropharmacology
		Cellular and Molecular Pharmacology
	Pathology	Pathology
		Cancer Pathology
Social Medicine	Immunology	Immunology
		Microbiology and Infectious Diseases
		Hygiene
		Public Health
		Forensic Medicine
Internal Medicine	Social Medicine	Health Care Policy
		Biostatistics
		Respiratory Medicine
		Rheumatology, Endocrinology and Nephrology
		Gastroenterology and Hepatology
		Cardiovascular Medicine
	Internal Medicine	Medical Oncology
		Hematology
		Radiation Oncology
	Radiology	Diagnostic Imaging
	Respiratory and Cardiovascular Innovative Research *	
	Minimally Invasive Advanced Heart Failure Therapeutics *	
	Innovative Heart Failure Telemedicine *	
	Community Heart Failure Healthcare and Pharmacy *	
	Advanced Diagnostic Imaging Development *	
	International Hematopoietic Cell Transplantation *	
Surgery	Surgery	Gastroenterological Surgery I
		Gastroenterological Surgery II
		Renal and Genitourinary Surgery
		Cardiovascular Surgery
	Anesthesiology and Critical Care Medicine	Anesthesia and Perioperative Medicine
		Acute and Critical Care Medicine
Specialized Medicine	Transplant Surgery *	
	Community Urological Healthcare System *	
	Reconstructive Surgery and Rehabilitation Medicine	Orthopedic Surgery
		Plastic and Reconstructive Surgery
	Reproductive and Developmental Medicine	Pediatrics
		Obstetrics and Gynecology
	Sensory Organ Medicine	Dermatology
		Otolaryngology-Head and Neck Surgery
		Ophthalmology
	Neurological Disorder	Psychiatry
		Neurosurgery
		Neurology
	Advanced Medicine for Spine and Spinal Cord Disorders *	
	Ocular Circulation and Metabolism *	
	Advanced Research for Locomotor System ■	
	Functional Reconstruction for the Knee Joint ■	
	Biomaterial Function Regeneration ■	
Interdisciplinary Medicine	Medical Biology	Neurobiology
		Human Evolution Studies

# Graduate School of Medicine

## Division of Medicine

Physiological Science	Biochemistry	Molecular Biology
		Medical Chemistry
	Anatomy	Anatomy and Embryology
		Histology and Cytology
	Physiology	Cell Physiology
		Systems Neuroscience
	Pharmacology	Neuropharmacology
		Cellular and Molecular Pharmacology
Pathological Science	Pathology	Pathology
		Cancer Pathology
		Diagnostic Pathology
	Microbiology and Immunology	Immunology
Social Medicine	Social Medicine	Microbiology and Infectious Diseases
		Hygiene
		Public Health
		Forensic Medicine
		Health Care Policy
		Biostatistics
		Medical Education and General Medicine
		Regulatory Science
		Translational Research Management
		Patient Safety
		Health Data Science
		Pharmaceuticals and Medical Devices Regulatory Science ★
Internal Medicine	Internal Medicine	Respiratory Medicine
		Rheumatology, Endocrinology and Nephrology
		Gastroenterology and Hepatology
		Cardiovascular Medicine
		Medical Oncology
		Hematology
		Health Care Medicine
		Clinical Cancer Genomics
	Radiology	Radiation Oncology
		Diagnostic Imaging
		Comprehensive Radiological Science ★
Surgery	Surgery	Gastroenterological Surgery I
		Gastroenterological Surgery II
		Renal and Genitourinary Surgery
		Cardiovascular Surgery
		Breast Surgery
		Thoracic Surgery
	Anesthesiology and Critical Care Medicine	Anesthesia and Perioperative Medicine
		Acute and Critical Care Medicine
Specialized Medicine	Reconstructive Surgery and Rehabilitation Medicine	Orthopedic Surgery
		Plastic and Reconstructive Surgery
		Rehabilitation Medicine
		Sports Medicine
	Reproductive and Developmental Medicine	Pediatrics
		Obstetrics and Gynecology
	Sensory Organ Medicine	Dermatology
		Otolaryngology-Head and Neck Surgery
		Ophthalmology
	Neurological Disorder	Psychiatry
		Neurosurgery
		Neurology

★ Collaborative Laboratory Established by Collaboration among Universities

Interdisciplinary Medicine	Medical Biology	Neurobiology
		Human Evolution Studies
	Immunology	Immunobiology
		Functional Immunology
		Molecular Psychoimmunology
		Biological Molecular Mechanisms
	Pathological Oncology	Stem Cell Biology
		Biomedical Oncology
	Clinical Collaboration	(Hospitals Serving as Clinical Collaboration) ●

## Division of Medical Science

	Medical Science	
--	-----------------	--

## List of Hospitals Serving as Clinical Collaboration

In Sapporo

Sapporo Medical Center NTT EC
Kashiwaba Neurosurgical Hospital
Keiyukai Sapporo Hospital
Sapporo Azabu Neurosurgical Hospital
Hokkaido P.W.F.A.C. Sapporo-Kosei General Hospital
Sapporo Neurology Hospital
Sapporo Hokuyu Hospital
Sapporo City General Hospital
Teine Keijinkai Hospital
Tonan-Hospital
National Hospital Organization Hokkaido Medical Center
National Hospital Organization Hokkaido Cancer Center
Hokkaido Orthopaedic Memorial Hospital
Hokkaido Neurosurgical Memorial Hospital
Hokuyukai Neurological Hospital
Japan Community Health care Organization Hokkaido Hospital

In Hokkaido

Japanese Red Cross Asahikawa Hospital
Eniwa Hospital
Keiwakai Ebetsu Hospital
Otaru General Hospital
Hokkaido P.W.F.A.C. Obihiro-Kosei General Hospital
Kushiro Rosai Hospital
Kushiro City General Hospital
Hakodate Municipal Hospital
Tomakomai City Hospital
Hakodate Orthopedics Clinic
Hakodate Central General Hospital
National Hospital Organization Hakodate National Hospital
Hokkaido Spinal Cord Injury Center



# Professors and Research Fields

Data as of November 1, 2022

□ Endowed Departments 
 ■ Industry Creation Departments 
 ★ concurrent 
 ◎ Specially Appointed Professor 
 \* Visiting Professor

\*1 Faculty of Medicine only \*2 Graduate School of Medicine only

	Departments	Professor	Theme of Research
Physiological Science	Molecular Biology	HATAKEYAMA Shigetsugu ★	1. Cell integrity based on cellular metabolisms and nuclear geometry 2. Nano structures controlling organelle dynamics 3. Molecular bases of cancer therapeutic resistance
	Medical Chemistry	HATAKEYAMA Shigetsugu	1. Ubiquitin system in protein degradation 2. Intracellular signal in cancer and immune system 3. Functional analysis of proteins/lipids by mass spectrometry
	Anatomy and Embryology	WATANABE Masahiko	1. Visualization of expression and localization of neural signaling molecules 2. Glial roles in neural development and function 3. Molecular mechanisms for synaptic circuit development
	Histology and Cytology	FUJIYAMA Fumino	1. Anatomy and function of central nervous system 2. Elucidation of Parkinson's disease 3. Sensing mechanism in the mechanical and chemical sensory apparatuses 4. Functional morphology of endogeneous lectins and glycoconjugates
	Cell Physiology	OHBA Yusuke	1. Visualization of cell functions using fluorescence bioimaging 2. Spatiotemporal regulation of intra- and intercellular signal transduction 3. Regulation of membrane dynamics 4. Development and application of fluorescent biosensors
	Systems Neuroscience	TANAKA Masaki	1. Neural control of voluntary movements 2. Functional analysis of the frontal cortex 3. Functional analysis of the basal ganglia 4. Functional analysis of the cerebellum
	Neuropharmacology	HATAKEYAMA Shigetsugu ★	1. Neuropharmacological studies of the serotonergic system development and its dysfunction 2. Neuropharmacological studies of the relationship between stress and emotional system 3. Neuropharmacological studies of impulsivity 4. Functions and molecular basic of local neuronal circuits for fear and anxiety 5. Optical imaging of learning-induced neural circuit reorganization 6. Optical imaging of abnormal neural circuit functions of autism spectrum disorders 7. Mechanisms for perception and recognition of virtual reality 8. Development of novel neural activity imaging techniques
	Cellular and Molecular Pharmacology	HATAKEYAMA Shigetsugu ★	1. Mechanism and function of REM and non-REM sleep 2. Cellular basis of memory 3. Alzheimer's disease 4. Molecular and cellular basis of hibernation
Pathological Science	Pathology	TANIGUCHI Koji	1. Research on inflammation and cancer 2. Research on inflammation and tissue regeneration 3. Mechanisms of autoimmune and inflammatory diseases 4. Research on tight junction 5. Development of new cancer-on-chip to elucidate the pathophysiology of intractable cancer 6. Human pathology and surgical pathology
	Cancer Pathology	TANAKA Shinya	1. Research on diagnostic and surgical pathology 2. Cancer progression, cancer stem cells, and therapeutics 3. Profiling analysis of various diseases 4. Bioimaging and rapid-immunohistochemistry 5. Biomaterial for analysis of cellular reprogramming 6. NGS-based research on brain tumor and sarcoma 7. Student-oriented innovative research
	Diagnostic Pathology *2	MATSUNO Yoshihiro	1. Diagnostic surgical pathology (including cytopathology) 2. Application of molecular studies in diagnostic pathology 3. Quality control and standardization in pathology laboratories 4. Clinicopathologic analysis of human malignancy

	Departments	Professor	Theme of Research
Pathological Science	Immunology	KOBAYASHI Koichi	<ol style="list-style-type: none"> <li>1. Host protection mediated by TLR and NLR family proteins</li> <li>2. Role of the innate immune system in the onset of infection and inflammatory diseases</li> <li>3. Nod2-dependent intestinal mucosal homeostasis and pathogenesis of Crohn's disease</li> <li>4. CITA/NLRC5: a key regulator of MHC class I genes</li> <li>5. Mechanisms of immune evasion by cancers</li> <li>6. Development of novel biomarkers and immunotherapies for cancer patients</li> <li>7. Vaccine development against cancer and coronaviruses using a novel vaccine technology</li> </ol>
	Microbiology and Infectious Diseases	FUKUHARA Takasuke	<ol style="list-style-type: none"> <li>1. Studies on viral and host factors involved in the propagation of hepatitis virus (HBV, HCV)</li> <li>2. Studies on the mechanism of pathogenicity of virus infection through molecular biological analysis and animal experimentation</li> <li>3. Studies on the diagnosis and drug discovery of viral infection (Coronavirus, Flavivirus)</li> <li>4. Epidemiological and molecular biological studies on zoonotic diseases (Hantavirus, Flavivirus)</li> </ol>
Social Medicine	Hygiene	UEDA Kayo	<ol style="list-style-type: none"> <li>1. Environmental epidemiological studies</li> <li>2. Quasi-experimental assessment of population-level health interventions (interrupted time series, instrumental variables)</li> <li>3. Environmental exposure assessment using earth observation data</li> <li>4. Assessment of environmental health risk, disease burden, and health impact of health policy</li> <li>5. Emergency preparedness for climate change, natural disasters, and infectious diseases in long-term care facilities</li> <li>6. Epidemiological study on behavioral and psychological symptoms of dementia</li> <li>7. Studies on the health effects of physical, chemical environment and social systems at the global and regional levels</li> </ol>
	Public Health	TAMAKOSHI Akiko	<ol style="list-style-type: none"> <li>1. Field study on diet and health</li> <li>2. Studies on unhealthy status and its related factors of the elderly</li> <li>3. Longitudinal study of age-related neuropsychiatric function among a community-based elderly</li> <li>4. Studies on lifestyle factors and health in adults</li> </ol>
	Forensic Medicine	HATAKEYAMA Shigetsugu ★	<ol style="list-style-type: none"> <li>1. Studies on medico-legal diagnosis of cause of death, postmortem interval, wounds, asphyxia, identification and postmortem CT diagnosis</li> <li>2. Studies on the mechanisms of generation concerning exogenous unusual findings</li> </ol>
	Health Care Policy	TAMAKOSHI Akiko ★	<ol style="list-style-type: none"> <li>1. Study on measures of healthcare and welfare for community-dwelling people in low fertility and ageing society</li> <li>2. Epidemiological study on HIV/AIDS/STIs and other includes Zoonosis and Life-Related diseases</li> <li>3. Study on risk perception/management/communication for infectious diseases</li> <li>4. Development of indicators to measure/raise community awareness against diseases</li> </ol>
	Biostatistics	HATAKEYAMA Shigetsugu ★	<ol style="list-style-type: none"> <li>1. Multivariate survival analysis</li> <li>2. Development and evaluation methodology for diagnostic method and clinical prediction model</li> <li>3. Development and application of clinical trial design</li> <li>4. Joint model of longitudinal data with flexibility</li> <li>5. Clinical epidemiology using big-data and public database</li> </ol>
	Medical Education and General Medicine *2	TAKAHASHI Makoto	<ol style="list-style-type: none"> <li>1. Development of innovative teaching methods and materials</li> <li>2. Development of innovative evaluation methods</li> <li>3. Studies on factors that affect learning behavior</li> <li>4. Studies on factors that affect physicians' career selection</li> </ol>
	Regulatory Science *2	ARATO Teruyo	<ol style="list-style-type: none"> <li>1. Studies on data necessary for the development of advanced biological medicines</li> <li>2. Studies on developmental strategy for orphan drugs</li> <li>3. Studies on post marketing surveillance of pharmaceuticals and medical devices</li> </ol>
	Translational Research Management *2	SATO Norihiro	<ol style="list-style-type: none"> <li>1. Methodology of clinical research</li> <li>2. Data management of clinical trial</li> <li>3. Management of cell processing for cell therapy and regenerative medicine</li> <li>4. Methodology of translational research support</li> </ol>
	Patient Safety *2	NASUHARA Yasuyuki	<ol style="list-style-type: none"> <li>1. Research on the methodology about system approach to patient safety</li> <li>2. Research on the methodology for cultivating talented risk managers in hospitals</li> <li>3. Research on the methodology about standardization of medical accident investigation</li> </ol>

	Departments	Professor	Theme of Research
Social Medicine	Health Data Science *2	ITO Yoichi	1. Studies on the methodology of clinical trials 2. Studies on the methodology of drug safety data analysis 3. Studies on the multivariate data analysis
	Pharmaceuticals and Medical Devices Regulatory Science (Collaborative Lab.) *2		
Internal Medicine	Respiratory Medicine	KONNO Satoshi	1. Prospective cohort studies of asthma and/or COPD 2. Research on molecular mechanisms, diagnosis, and treatment of thoracic malignancies 3. Research on molecular mecahnisms of chronic airway disease and/or diffuse lung disease 4. Basic/clinical research on pulmonary hypertension and cardiac sarcoidosis 5. Basic/clinical research on respiratory infectious diseases
	Rheumatology, Endocrinology and Nephrology	ATSUMI Tatsuya	1. Basic and clinical research on autoimmune disorders 2. Research on the pathophysiology, diagnosis and therapy of diabetes, obesity and dyslipidemia 3. Research on the pathophysiology and therapy of endocrine diseases 4. Basic and clinical research on renal diseases
	Gastroenterology and Hepatology	SAKAMOTO Naoya	1. Research for pathophysiology, diagnosis and treatment of liver diseases 2. Research for pathophysiology, diagnosis and treatment of pancreatobiliary diseases 3. Research for pathophysiology, diagnosis and treatment of malignant tumor of digestive system 4. Research for pathophysiology and treatment of inflammatory bowel diseases 5. Research for pathophysiology, diagnosis and treatment of digestive diseases
	Cardiovascular Medicine	ANZAI Toshihisa	1. Research on pathophysiology, diagnosis, and treatment for ischemic heart disease 2. Molecular biological and clinical research on pathophysiology and treatment for heart failure 3. Research on etiology, diagnosis, and treatment for cardiomyopathy 4. Research on molecular and genetic basis, diagnosis, and treatment for lifestyle disorder 5. Research on etiology, diagnosis, and treatment for arrhythmia 6. Development of non-invasive technique for diagnosis of heart disease
	Medical Oncology	KONNO Satoshi ★	1. Research on diagnosis and treatment of malignant tumors 2. Research on molecular pathophysiology, diagnosis and treatment of lung cancers and mediastinal tumors 3. Research on molecular pathophysiology, diagnosis and treatment of tumors of the digestive organs 4. Research on cancer drug therapy 5. Research on molecular targeting therapy of cancer 6. Research on genome analysis, companion diagnostics and precision medicine of cancer
	Hematology	TESHIMA Takanori	1. Research on molecular pathogenesis, diagnosis, treatment of hematological malignancies 2. Basic and clinical researches to improve outcome of hematopoietic stem cell transplantation and immune cell therapy 3. Basic research to understand cellular & molecular biology of hematopoiesis 4. Basic and clinical researches on cell therapies against viral infections and malignant diseases 5. Pathogenesis, diagnosis, and treatment of immunodeficiencies, including AIDS 6. Research to improve safety and efficacy of blood transfusion 7. Research on platelet function, blood coagulation and fibrinolysis
	Health Care Medicine *2	HASHINO Satoshi	1. Research for impaired health caused by stresses 2. Research for evidence based medicine in health examination 3. Research for hematopoietic diseases induced by hazardous materials 4. Research for immune thrombocytopenia 5. Research for complications and adverse events of treatment in HIV infection
	Clinical Cancer Genomics *2	KINOSHITA Ichiro	1. Research for cancer genomics 2. Research for genomic abnormality of cancer 3. Research for epigenetic alteration of cancer 4. Development of novel biomarker on cancer 5. Research for molecular targeted therapy on cancer



	Departments	Professor	Theme of Research
Internal Medicine	Radiation Oncology	AOYAMA Hidefumi	1. Research for external irradiation 2. Research for high precision X ray therapy 3. Research for particle therapy and proton therapy 4. Research for medical physics 5. Research for radiobiology for radiotherapy
	Diagnostic Imaging	KUDO Kohsuke	1. Diagnostic radiology using CT, MRI, ultrasound, and nuclear medicines 2. Vascular imaging and interventional radiology 3. Radioisotope treatment 4. Imaging analysis of tracer kinetics and artificial intelligence 5. Synthesis of contrast media and radiopharmaceuticals 6. Molecular imaging using stable isotopes and radio isotopes
	Respiratory and Cardiovascular Innovative Research □ *1	TSUJINO Ichizo ○	1. Pathogenesis and development of pulmonary hypertension 2. Right heart function in pulmonary hypertension 3. Imaging and treatment of cardiac sarcoidosis
	Minimally Invasive Advanced Heart Failure Therapeutics □ *1	ANZAI Toshihisa ★	1. Appropriate use criteria for percutaneous coronary intervention 2. Development of novel minimal invasive procedures for structural heart disease 3. Cost-effectiveness analysis of transcatheter aortic valve replacement 4. Predictors for thrombus formation on prosthetic valve following transcatheter aortic valve replacement
	Innovative Heart Failure Telemedicine □ *1	ANZAI Toshihisa ★	1. Development of remote monitoring for heart failure patients using electrophysiologic devices 2. Optimal medical treatment for heart failure by remote hemodynamic monitoring 3. Prevention of sudden cardiac death 4. Development of large-scale heart failure registry
	Community Heart Failure Healthcare and Pharmacy □ *1	ANZAI Toshihisa ★	1. Development of community heart failure healthcare system with local pharmacy 2. Research of palliative care for patients with heart failure 3. Research in the field of onco-cardiology
	Advanced Diagnostic Imaging Development □ *1	KUDO Kohsuke ★ NAKAYA Jun ○	1. Stable isotope and multi-nuclear MRI 2. Image processing and computer-assisted diagnosis using AI 3. Efficacy for diagnostic imaging
	International Hematopoietic Cell Transplantation □ *1	TESHIMA Takanori ★	1. International cooperative study of basic and clinical immune cell therapy including hematopoietic cell transplantation 2. Development of human resources concerning hematopoietic cell transplantation 3. Provision of clinical support for hematopoietic cell transplantation performed outside Japan
Surgery	Gastroenterological Surgery I	TAKETOMI Akinobu	1. Basic research and treatment on the surgical GI tract and HPB diseases 2. Development of endoscopic and/or robotic surgery for the GI tract and HPB diseases 3. Study for the pathogenesis and management of transplant immunology 4. Research for the improvement of organ preservation 5. Clarification of pathogenesis and development of new strategy of cell transplantation 6. Artificial Intelligence (AI) applied research in the field of gastroenterological surgery 7. Study of the surgical education and surgical training 8. Basic research and treatment on pediatric surgical oncology and pediatric hepatobiliary diseases 9. Basic and clinical research on the function of pediatric digestive system
	Gastroenterological Surgery II	HIRANO Satoshi	1. Clarification of pathogenesis and development of surgical treatments of the malignancy of the digestive system 2. Development of endoscopic surgery and its devices 3. Clinical research for perioperative management of highly invasive digestive surgeries 4. Study for multidisciplinary treatment of pancreato-biliary cancer 5. Molecular research on biomarkers associated with oncological malignancy 6. Exploring translational research on immunotherapy 7. Analysis of immune responses in tumor microenvironments 8. Study of gene therapy for intractable cancers 9. Study for surgical training 10. Study for bariatric and metabolic surgery

	Departments	Professor	Theme of Research
Surgery	Renal and Genitourinary Surgery	SHINOHARA Nobuo	1. The mechanism of development of detrusor overactivity associated with lower urinary tract obstruction 2. Neural transmitted pathway at the bladder stimulation 3. The development of chronic rejection in transplanted kidney 4. The analysis of immunology in renal transplantation and development of the treatment of immunological regulation 5. The mechanism of carcinogenesis and progression in kidney cancer 6. The mechanism of metastasis and progression of urothelial cancer 7. QOL study on the treatment of prostate cancer 8. The development of minimal invasive surgery
	Cardiovascular Surgery	WAKASA Satoru	1. Research on surgery for severe heart failure 2. Research on surgery for functional mitral regurgitation 3. Research on myocardial protection 4. Autophagy in left ventriculoplasty 5. Metabolic disturbances in atrial fibrillation 6. Endovascular stent graft therapy for aortic diseases
	Breast Surgery *2	TAKAHASHI Masato	1. Research on biological characteristics in breast cancer 2. Research on endocrine therapy in breast cancer 3. Research on mechanisms of breast cancer development and prevention 4. Research on the development of new breast cancer screening methods 5. Research on the development of breast cancer surgical methods 6. Research on the perioperative drug therapy for breast cancer 7. Research on drug therapy for metastatic breast cancer 8. Research on hereditary breast cancer
	Thoracic Surgery *2	KATO Tatsuya	1. Development of minimally invasive thoracic surgery 2. Surgery in multimodality thearapy for lung cancer 3. Lung transplantation 4. Photodynamic therapy using nanoparticle for thoracic malignant tumors 5. Development of early diagnosis and molecular targeted therapy using next generation sequence for lung cancer 6. Photoimmunotherapy for lung cancer 7. Therapy for malignant mesothelioma and dissemination of cancer
	Anesthesia and Perioperative Medicine	MORIMOTO Yuji	1. Cerebral protection and resuscitation 2. Care and cure for the whole body against invasive biological stress 3. Neurotoxicity by anesthetics 4. Mechanism of postoperative cognitive dysfunction 5. Mechanism and treatment of pain 6. Mechanism of respiratory cycle and effect of drugs 7. Hyperbaric oxygen therapy 8. Patient management system in the operating room and the medical economics
	Acute and Critical Care Medicine	MORIMOTO Yuji ★	1. Body responses to various insults -pathophysiology and their control- 2. Multiple organ dysfunction syndrome -pathophysiology and treatment- 3. Critical care medicine 4. Cardiopulmonary cerebral resuscitation 5. Toxicology 6. Traumatology 7. Disaster medicine 8. Medical, transportation, and information system for acute medicine
	Transplant Surgery □ *1	TAKETOMI Akinobu ★	1. Basic studies for the safe use of Expanded Criteria Donor (ECD) grafts: improvement of organ storage and development of organ perfusion 2. Novel methods to enhance the survival signal in the graft 3. Basic study to construct cell resource bank of human liver-derived stem cells 4. Experimental and clinical studies to establish immunological tolerance introduced by regulatory T cells and its evaluation of immunological status 5. Basic studies for the improvement of the prognosis after cell transplantation 6. Clinical studies for the improvement of pancreatic islet transplantation
	Community Urological Healthcare System □ *1	SHINOHARA Nobuo ★	1. Research on urologist training system for wide medical areas in collaboration with Hokkaido university hospital and training cooperation hospitals 2. Research on the development of urological surgery education system 3. Research on construction of a remote medical care system that can safely perform advanced urological surgical treatment such as robot-assisted surgery 4. Research on the development of the Internet of Things (IoT) service about bladder and bowel dysfunction

	Departments	Professor	Theme of Research
Specialized Medicine	Orthopedic Surgery	IWASAKI Norimasa	1. Tissue engineering for musculoskeletal tissue repair 2. Etiology and pathogenesis of osteoarthritis 3. Role of glycans and these recognizing molecules in bone and cartilage metabolism 4. Pathophysiology of secondary osteoporosis 5. Study of intervertebral disc apoptosis for prevention of the disc regeneration 6. Basic research for elucidation of rheumatoid arthritis pathogenesis 7. Regulation of arthritis and osteolysis by manipulation of inflammation 8. Biomechanical evaluation of surgical efficacy for musculoskeletal disorders 9. Regenerative medicine for spinal cord injury and peripheral nerve injury
	Plastic and Reconstructive Surgery	YAMAMOTO Yuhei	1. Translational research in wound healing 2. Translational research in treatment of keloid 3. Development of surgical technique in free tissue transfer 4. Basic research in surgical oncology 5. Translational research of angiogenesis of vascular and lymphatic vessel 6. Regenerative medicine based on tissue engineering method 7. Development of therapeutic technique in cranio-maxillo-facial surgery
	Rehabilitation Medicine *2	MUKAINO Masahiko	1. Research on motion analysis of movement disorders 2. Research on activity monitoring 3. Research on functioning statistics for daily life 4. Research on telerehabilitation 5. Research on assessment methods for cognitive impairment
	Sports Medicine *2	KONDO Eiji	1. Motion analysis of athletes for performance improvement 2. Development of reconstruction surgery for osteoarthritis 3. Tissue regeneration of joints 4. Elucidation of remodeling mechanism of soft tissue 5. Medical application of synthetic polymer gel 6. Development of advanced treatment technology for musculoskeletal disorder
	Pediatrics	MANABE Atsushi	1. Establishing methods for early diagnosis of primary immunodeficiency diseases 2. Development of the diagnostic method and oral immunotherapy of food allergy 3. Molecular epidemiological studies on macrolide-resistant mycoplasma pneumoniae 4. Clinical and molecular study for diagnosis and management in pediatric hematology and oncology 5. Clinical and molecular study in pediatric stem cell transplantation and cell therapy 6. Molecular analysis of pediatric endocrine disease 7. Comprehensive molecular analysis of congenital hypothyroidism 8. Pathogenesis and function analysis of epilepsy using magnetoencephalography 9. Pathological analysis and therapeutic development using neurological disease model animals 10. Histopathological analysis on the role of activated glomerular parietal epithelial cell in childhood kidney disease 11. Molecular genetic diagnosis and management in pediatric cardiomyopathy 12. Development of a Mitochondrial Drug Delivery System for Myocardial Regeneration Therapy 13. Study to improve outcome of neonatal chronic lung disease 14. Study on influence from environmental parameters on fetal and neonatal health 15. Basic and Clinical study in inborn errors of metabolism
	Obstetrics and Gynecology	WATARI Hidemichi	1. Basic studies on the physiology of fetus and amnion 2. Clinical studies on the antenatal diagnosis and fetal therapy 3. Studies on the development of new strategy for the management of complicated pregnancies 4. Clinical studies on the treatment of infertility 5. Intrafollicular physiology 6. Molecular mechanism of genesis and metastasis of uterine cancer 7. Chemoresistance of female reproductive cancer 8. Molecular mechanism of placental growth and differentiation 9. Development of novel molecular-targeting therapy for ovarian cancer 10. Establishment of new effective screening method for cervical cancer
	Dermatology	UJIE Hideyuki	1. Molecular biological research of epidermis 2. Research on pathophysiology, diagnosis and treatment of genetic skin disorders 3. Research on pathophysiology, diagnosis and treatment of autoimmune blistering skin diseases 4. Research on pathophysiology, diagnosis and treatment of malignant skin tumors 5. Research on pathophysiology, diagnosis and treatment of atopic dermatitis 6. Research on tissue engineering and wound healing 7. Research on pathophysiology and treatment of alopecia 8. Research on novel therapeutic modalities for genetic skin disorders



	Departments	Professor	Theme of Research
Specialized Medicine	Otolaryngology-Head and Neck Surgery	HOMMA Akihiro	1. Basic research and clinical analysis for pathogenesis of sensorineural hearing loss 2. Basic research and clinical analysis of sensorineural hearing loss by viral infection 3. Basic research and clinical analysis of nasal allergy 4. Basic research and clinical analysis of Eosinophilic chronic rhinosinusitis 5. Immunological approach for head and neck cancer 6. Basic research and clinical analysis of chemotherapy for head and neck cancer 7. Molecular biologic studies on head and neck cancer
	Ophthalmology	ISHIDA Susumu	1. Retinal cell biology 2. Ocular Immunology and inflammation 3. Ocular neuroprotection 4. Ocular oncology and pathology 5. Pathophysiology and treatment of ocular surface disease 6. Ocular circulation and metabolism
	Psychiatry	KUSUMI Ichiro	1. Psychopathology of psychiatric diseases 2. Development of new psychotherapy techniques 3. Development of new diagnostic techniques and new treatment of epilepsy 4. Molecular genetic study of psychiatric diseases 5. Development of animal models of psychiatric diseases and neuroscience 6. Development of new psychotropic drugs and psychopharmacology 7. Neuroimaging in psychiatric diseases 8. Neurophysiological and neuropsychological study of psychiatric diseases
	Neurosurgery	FUJIMURA Miki	1. Basic and clinical research on malignant glioma 2. Basic and clinical research on cerebrovascular disorders 3. Basic and clinical research on spinal cord disorders 4. Translational research on CNS regeneration 5. Surgical anatomy of skull base surgery 6. Genomic research on cerebrovascular disorders 7. Cerebral hemodynamics and metabolism 8. Clinical research on pediatric neurosurgery
	Neurology	YABE Ichiro	1. Molecular biology and genetics for neurological disorders 2. Immunohistochemistry of muscles and peripheral nerves 3. Basic studies for the disease mechanism and therapeutic approach in neuro-immunological disorders 4. Biomarkers in neurological disorders 5. Clinical neuroelectrophysiology 6. Cogitive brain function 7. Neuroepidemiology
	Advanced Medicine for Spine and Spinal Cord Disorders □ *1	IWASAKI Norimasa ★ SUDO Hideki ○	1. Intervertebral disc regeneration based on its degeneration mechanism 2. Development of innovative diagnostic and treatment strategy for spinal deformity and degenerative diseases
	Ocular Circulation and Metabolism □ *1	ISHIDA Susumu ★	1. Development of novel methodology for fundus image analysis 2. Application of deep learning for retinal vasculature evaluation 3. Clinical application of quantitative assessment for ocular circulation
	Advanced Research for Locomotor System ■ *1	IWASAKI Norimasa ★	1. Development of analysis method or regulation system of locomotor organs 2. Development of screening, prevention, and treatment strategy for locomotor diseases 3. Development of strategy for regeneration of nervous system
	Functional Reconstruction for the Knee Joint ■ *1	IWASAKI Norimasa ★	1. Development of novel joint preservation surgery for knee osteoarthritis 2. Novel evaluation method for knee function 3. Establishment of the surgical strategy for joint preservation surgery optimized for individual knee function
	Biomaterial Function Regeneration ■ *1	IWASAKI Norimasa ★	1. Development of less invasive regenerative medicine for musculoskeletal disorders 2. Development of novel devices for the treatment of musculoskeletal disorders 3. Development of postoperative training programs for less invasive regenerative medicine 4. Research on evaluation techniques for combination therapy of biomaterials and cells

	Departments	Professor	Theme of Research
Interdisciplinary Medicine	Neurobiology	KAMIYA Haruyuki	1. Neurobiology of axon 2. Neurobiology of synapse
	Human Evolution Studies	HATAKEYAMA Shigetsugu ★	1. Evolution and functional adaptation of skeletal morphology 2. Analysis of bone cross-sectional geometry using CT images 3. Development of morphological analysis methods of human fossils 4. Study on the pattern and mechanism of human evolution 5. Human-environment relationships in Eurasian Paleolithic 6. Archaeometry of obsidian 7. Research on prehistoric cultures of Hokkaido
	Immunobiology *2	SEINO Ken-ichiro	1. Tumor Immunology 2. Transplant Immunology 3. Development of a novel immune cell therapy using cell reprogramming technique
	Functional Immunology *2	MURAKAMI Masaaki ★	1. Molecular and cellular mechanisms on the functional regulation of dendritic cells and its application to immune-related diseases 2. Evaluation of IL-6 signaling-mediated immunosuppression 3. Research on pathogenesis of severe asthma and chronic inflammation and development of the novel immunotherapy 4. Identification of novel biomarkers for development of personalized medicine
	Molecular Psychoimmunology *2	MURAKAMI Masaaki	1. Molecular mechanism for T cell-specific autoimmune disease development by the gateway reflexes 2. Bioelectronic medicine by the gateway reflexes and the VNS 3. Molecular mechanisms underlying inflammation development via the IL-6 amplifier activation 4. Research for functional roles of SNPs associated with chronic inflammatory diseases (the IL-6 amplifier) 5. Development of novel drugs and biomarkers for diseases associated with chronic inflammation (the IL-6 amplifier)
	Molecular Mechanisms *2	NODA Nobuo	1. Molecular mechanism of autophagy 2. Molecular mechanism of life phenomena regulated by liquid-liquid phase separation 3. Elucidating the molecular functions of biomolecules based on their structure
	Stem Cell Biology *2	KONDO Toru	1. Molecular mechanism involved in the maintenance and differentiation of neural stem/precursor cells 2. Molecular mechanism of neural stem/precursor aging 3. Characterization of cancer stem cells and analysis of their therapeutic targets 4. Relationship between neural stem cells and age-related disorders
	Biomedical Oncology *2	SONOSHITA Masahiro	1. Studying how cancers develop 2. Elucidating the mechanisms of how drug resistance occurs in cancer 3. Generating novel anti-cancer therapeutics



# Centers and Facilities

## Center for Medical Education and International Relations

(Established: September 1, 2010; reorganized: April 1, 2018)

Data as of April 1, 2022

The center was established to support the conduct of R&D in medical education and promote medical education and international relations through planning, drafting, coordination and other considerations for educational activities and international relations.

### Steering Committee

The committee is tasked with deliberations on important matters regarding the center, as follows:

- (1) teaching staff
- (2) budgeting and settlement of accounts
- (3) international relations
- (4) operations of the Center
- (5) events held by the Center
- (6) other important matters related to the Center

#### [Members]

- (1) Director, Center for Medical Education and International Relations
- (2) Chief Vice Director, Center for Medical Education and International Relations
- (3) Vice Directors, Center for Medical Education and International Relations
- (4) Committee Chairperson, Academic Affairs Division, School of Medicine
- (5) Committee Chairperson, Academic Affairs Division, Graduate School of Medicine
- (6) Full-time faculty member of the Center for Medical Education and International Relations (excluding Assistant Professors for Educational Support and Assistant Professors)
- (7) Several other individuals with a role deemed necessary by the Director of the Center for Medical Education and International Relations

### [Aim]

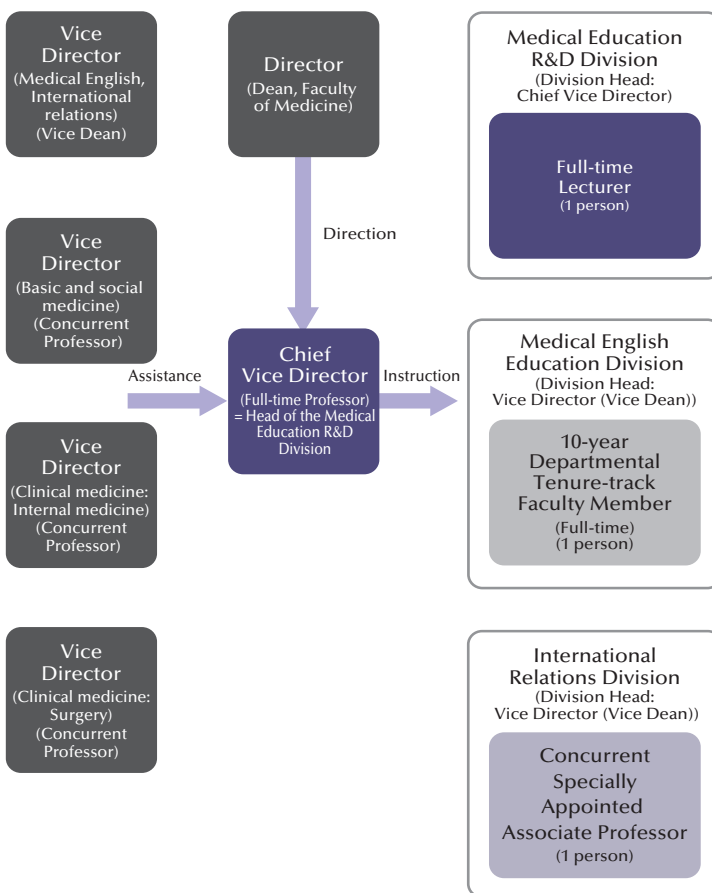
The aim of the Center for Medical Education and International Relations is to contribute to the promotion of medical education and international relations at the Faculty of Medicine, the Graduate School of Medicine, and the School of Medicine by promoting R&D on medical education at the Faculty of Medicine and designing, planning and coordinating medical educational and international relations programs at the Graduate School of Medicine and the School of Medicine.

### Executive Committee

The Executive Committee is set up within the Center for Medical Education and International Relations of the Hokkaido University Faculty of Medicine to examine specific implementation measures of programs and events that have been designed and planned by the Center and to implement them in collaboration with the Faculty of Medicine, Graduate School of Medicine, School of Medicine and Hokkaido University Hospital.

#### [Members]

- (1) Chief Vice Director, Center for Medical Education and International Relations
- (2) Vice Directors, Center for Medical Education and International Relations
- (3) Committee Chairperson, Academic Affairs Division, School of Medicine
- (4) Committee Chairperson, Academic Affairs Division, Graduate School of Medicine
- (5) A full-time faculty member of the Postgraduate Clinic Training Center, Hokkaido University Hospital
- (6) Full-time faculty member of the Center for Medical Education and International Relations (excluding Assistant Professors for Educational Support)
- (7) Several other individuals with a role deemed necessary by the Director of the Center for Medical Education and International Relations



## Overview of Faculty Development (FD) Activities (FY2021)

Host: Center for Medical Education and International Relations

Number	Date	Theme
56 <sup>th</sup>	June 24 (Thu.), 2021 16:30 - 18:00 Online	Theme: Toward accreditation—Self-inspection of medical education at Hokkaido University School of Medicine Purpose: To understand the significance of accreditation, for which site visits by external investigators had been scheduled for November 2021, and to share the results of self-inspection of medical education at Hokkaido University School of Medicine
57 <sup>th</sup>	July 27 (Tue.), 2021 17:30 - 19:00 Online	Theme: Evaluation of clinical clerkships Purpose: To review the 2020 clinical clerkships in core clinical departments and to explain how to use the CC-EPOC (EPOC for student doctors), which were to be introduced into the practice that would begin in September 2021
58 <sup>th</sup>	December 2 (Thu.), 2021 16:30 - 18:00 Online	Theme: Dealing with unprofessional behavior and attitudes, neoliberalism, and physician work-style reform Purpose: Inviting Professor Hiroshi Nishigori, who has been involved in the evaluation of unprofessional students since 2013, to lecture on the background of unprofessional students, their handling, and the impact of future physician work-style reform
59 <sup>th</sup>	March 24 (Thu.), 2021 17:30 - 19:00 Online	Theme: Introduction to the 2021 national examination for medical practitioners Purpose: To analyze recent trends while introducing the 2021 national medical examination questions, and to provide information on common achievement tests, which will be legally authorized

### [Mission]

#### Medical Education R&D Division

- R&D, design, planning, implementation, guidance and advice for medical educational programs
- R&D on educational assessment systems
- Gathering and analysis of information on medical education

- Administration and management of Common Achievement Tests (OSCE and CBT)
- Planning and implementation on faculty development
- Miscellaneous R&D and the promotion of medical educational programs

## ■ Medical English Education Division

- Design, planning and implementation of medical English programs for the School of Medicine
- Design, planning and organization of medical English seminars

## ■ International Relations Division

(International Relations Office: established on July 13, 2006; reorganized on April 1, 2018)

Followed by the recent trend of globalization, the International Relations Division was established to further enhance the international profile of the School of Medicine, the Graduate School of Medicine, and the Faculty of Medicine on the international scene to promote the internationalization of education and research.

In the field of education, we seek to foster future professionals through in-bound and out-bound student exchange programs to develop individuals capable of playing active roles on the global stage. Creating a firm partnership with overseas universities and research institutions is essential to practice close and sustainable international relationships.

To facilitate smooth and robust student exchange program for both native and overseas medical students, we proactively support students by concluding inter-university and departmental exchange agreements with outstanding universities to provide quality education to meet the needs of the times. (Refer to the map below)

We were currently suspending the student exchange programs between our partner universities from 2020 due to the effects caused by COVID-19. However, the division is now preparing to resume

- Support for the sharing of research results with the international community
- Exchanges with overseas universities
- Exchanges with international students
- International development cooperation
- International Exchange Fund of the Faculty of Medicine, the Graduate School of Medicine and the School of Medicine

international activities from 2023 in a safe and reliable way by strengthening a crisis management system along with considering new ways to conduct international relationship.

In the field of research, we provide indirect support for international students enrolled in the Graduate School of Medicine who has started to build a career path as a researcher. At present, 46 students from 8 countries on doctoral and master's programs as of April 2022 are studying in an environment significantly different from their home country. Full-time staff and students support staff of the International Relations Division provides students with advice and assistance to create a secure environment for students to spend a comfortable campus life.

Furthermore, the Division hosts social and cultural events such as International Hour to share students' knowledge of cultural backgrounds of their home countries with medical students and other international students.

To disseminate efforts both inside and outside the university, we publish the newsletter Voice of the International Students (VIS) in the hope to further propel internationalization.



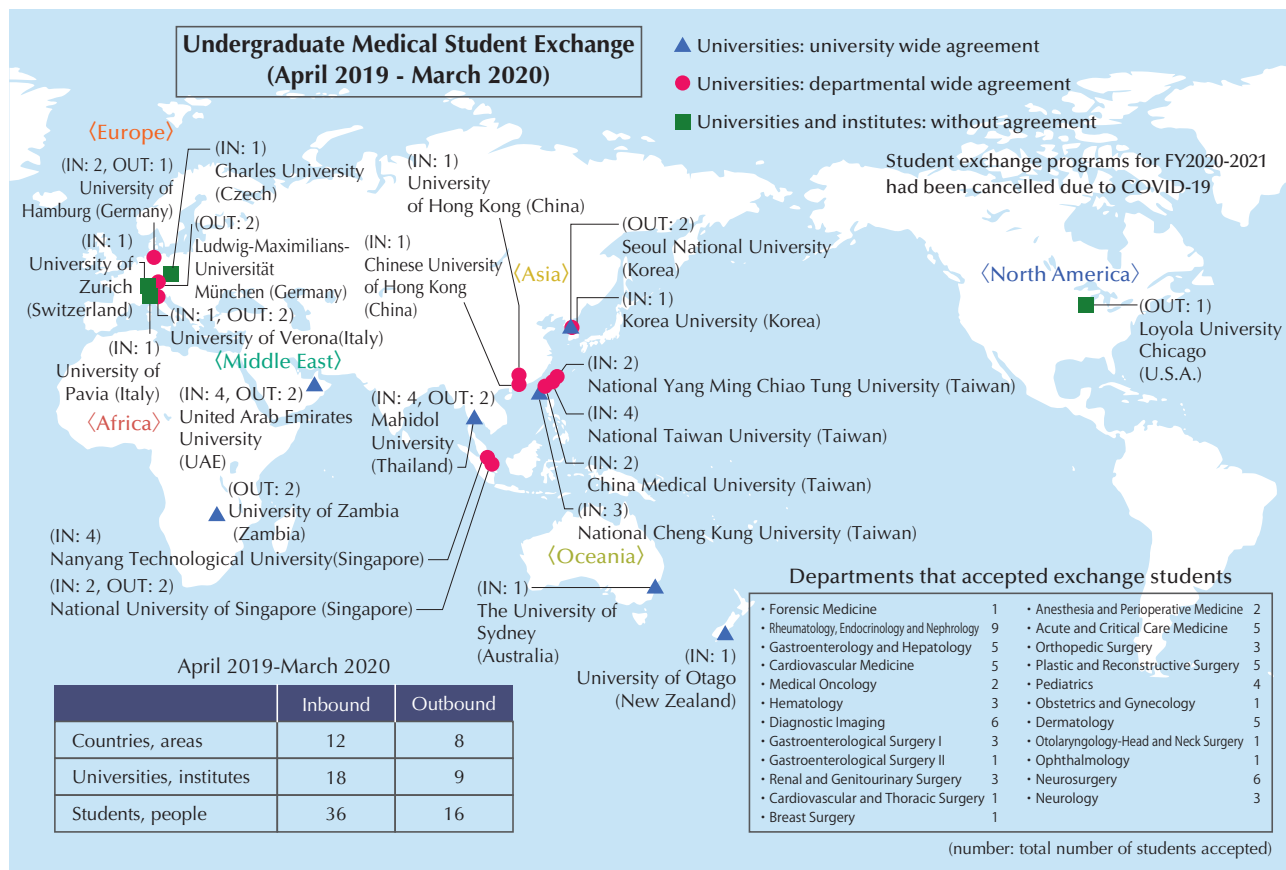
International Relations Division



A Visit from The University of Melbourne (Australia)



Events to interact with international students





# Research Center for Cooperative Projects “Frate”

(Established: April 1, 2006)

The center was established to promote translational research, in which the results of basic life science research are applied to clinical research for the purpose of contributing to medical science, medical care and health maintenance.

The Center supports initiatives such as large-scale research projects of the the Global Center for Biomedical Science and Engineering, Faculty Medicine (GI-CoRE Cooperating Hub).

The promotion of collaborative research by teams from a wide range of disciplines has produced a variety of world-leading results in interdisciplinary areas covering medical science, life science, general science and engineering.

In 2017, the naming of divisions/departments changed in association with reorganization of the Graduate School of Medicine. In 2020, the Department of Molecular and Cellular Function Imaging and the Department of Treatment/Working Balance Medicine and in 2021, the Department of Medical AI Education and Research, were

newly established. In 2021, the Department of Photonic Bioimaging and the Department of Treatment/Working Balance Medicine, having served their purposes, were abolished, and research activities are currently conducted at four departments.



## ■ Organization

Data as of April 1, 2022

<b>Regenerative Medicine and Tissue Engineering</b> Director TANAKA Shinya The research department focuses on the development of new comprehensive treatment strategies for the provision of rational medical solutions to issues of joint restoration/reconstruction.	Cancer Pathology	Orthopedic Surgery
	Pathology	
<b>Medical and Health Research Promotion Involving Human Subjects</b> Director TAMAKOSHI Akiko The department focuses on research involving human subjects in order to promote human health maintenance and promotion, accelerate patients' recovery from illness and help improve the quality of their lives.	Public Health	Clinical Research and Medical Innovation Center, Hokkaido University Hospital
	Biostatistics	Data Science Center, Hokkaido University Hospital
	Hygiene	
<b>Molecular and Cellular Function Imaging</b> Director KUDO Kohsuke The department focuses on research aimed at elucidating biological functions and pathological conditions by clarifying molecular and tissue functions using functional imaging at the molecular and cellular levels.	Diagnostic Imaging	Molecular Psychoimmunology, Institute for Genetic Medicine
	Rheumatology, Endocrinology and Nephrology	
<b>Medical AI Education and Research</b> Director KUDO Kohsuke The focus at this department is research and development of cutting-edge medical AI while medical AI educational programs are available for graduate students and working adults.	Diagnostic Imaging	Laboratory for Bioanalysis and Molecular Imaging, Graduate School of Pharmaceutical Sciences
	Advanced Diagnostic Imaging Development	Dept. of Biomedical Science and Engineering, Faculty of Health Sciences
	Laboratory of Media Dynamics, Graduate School of Information Science and Technology	Dept. of Health Sciences and Technology, Faculty of Health Sciences
		Dept. of Emergent Neurocognition, Faculty of Health Sciences

### ■ Principal Laboratory

An organization selected from among key departments (including affiliated educational and research facilities) in the Faculty of Medicine; close relations with the Collaborative Laboratory

### ■ Collaborative Laboratory

An organization with external funding at which research projects are implemented in collaboration with the Principal Laboratory

### ■ Extra Support Organization

A non-Faculty of Medicine organization contributing to project research collaboratively implemented by the Principal Laboratory and the Collaborative Laboratory

# Institute for Animal Experimentation

(Established: May 1, 1972)

The institute was established to support animal experimentation for life science research, and was renovated in 2014.

## ■ Eligible animal species

Mice, rats, rabbits, dogs, pigs, sheep, monkeys and other animals

## ■ Rearing rooms and laboratories

Animal rearing rooms, surgery and experimental treatment rooms, behavioral analysis room, biological specimen analysis room, experimental infection rooms, X-ray irradiation room and imaging room

## ■ Analytical instruments

X-ray irradiation system, in vivo imaging system, two-photon microscopy

## ■ Technical support

Basic technical training, genetic stock preservation (frozen embryos, sperm preservation), genetic stock maintenance, reproductive technology (embryo and sperm freezing, individual creation), anesthesia induction support, experimental and therapeutic support of laboratory animals



## Number of Registered Laboratories and People

(Data as of March 31, 2022)

	Laboratories	Numbers Registered
Faculty of Medicine	26	204
Other Faculties in the University	6	54

## Number of Facility Users (Fiscal Year 2021)

Number of Users (Apr. 1, 2021 - Mar. 31, 2022)	32,121
Daily Average Number of Users	88

# Library, School of Medicine

(Established: December 1970)

## ■ Collections (Data as of March 31, 2022)

Classification	Japanese Books	Foreign Books	TOTAL
Number of Books	52,438	93,467	145,905
Journals	3,259	2,482	5,741

## ■ Library Use Information (academic 2021)

Visits	Regular opening hours Special usage hours <b>TOTAL</b>	24,140 0 <b>24,140</b>
Days Opening		242
Borrowers	Staff Members Students <b>TOTAL</b>	822 7,481 <b>8,303</b>
Total circulation	Staff Members Students <b>TOTAL</b>	1,249 9,364 <b>10,613</b>
Interlibrary loan document delivery	Requests to Others Requests from Others	733 840
Interlibrary loan	Requests to Others Requests from Others	7 10
Reading Desks/Seats		48

## ■ Library Hours (academic 2022)

Regular opening hours Monday through Friday 9:00–22:00  
Aug., Sep. and Mar. 9:00–17:00

Special usage hours Monday through Friday 5:00–9:00  
Aug., Sep. and Mar. 5:00–9:00, 17:00–22:00

Saturday, Sunday, and Holidays 5:00–22:00  
Special usage requires registration in advance.

## ■ Closed

Saturday, Sunday and Holidays  
Year-end/New Year Holidays (December 28 – January 4)



## Medical and Dental Research Building

(Established: March 1, 2004)

Medical and Dental Research Building is a unique facility in Hokkaido University that is managed jointly by two different departments: one medical and the other dental. Undergraduate and graduate students are educated here.

### ■ Department of Education and Practices

Anatomy Lab, Histology and Pathology Lab, Biochemistry and Microbiology Lab, Physiology and Pharmacology Lab, Lab of Forensic Medicine (Center for Cause of Death Investigation), Lab of Medical Informatics

### ■ Core Research Facility

Cell Biology Lab, Molecular Biology Lab, Ultramicroscopic Lab, Brain Science Lab

### ■ Department of Experimental Animals

Small Animal Rearing Room, Small Animal Procedure Room, Lizard Rearing Room, General Animal Laboratory

### ■ Rental Laboratory

### Center for Cause of Death Investigation (Established: April 1, 2016)

The center was established for education and research on cause-of-death investigation\*, the development and implementation of educational programs on human resource cultivation, and sharing knowledge on cause-of-death investigation and improvement in diagnostic technology in collaboration with relevant organizations in Hokkaido University and elsewhere.

\*Cause-of-death investigation includes cause-of-death determination by forensic or pathological autopsy and postmortem imaging, personal identification by dental findings and the appropriate response to crimes, abuse and accidents based on clinical forensic medicine.



## Interprofessional Education and Research Building

(Established: April 1, 2016)

Interprofessional Education and Research Building provides an environment for interprofessional education in which students and staff from different health professions (including medicine, dentistry, pharmacy and nursing) learn together. It houses the Clinical Simulation Center, the Medical Innovation Center and other facilities.

### ■ Facilities

#### East Bldg.

#### 2F and 3F Clinical Simulation Center

The center provides simulation-based educational programs for students of the School of Medicine (Faculty of Medicine and Faculty of Health Sciences), the School of Dental Medicine and the School of Pharmaceutical Sciences and Pharmacy as well as staff of Hokkaido University Hospital (e.g., doctors, nurses and pharmacists).

#### 1F, 3F and 4F Medical Innovation Center

The Medical Innovation Center was established as a fruit of the Matching Program for Innovations in Future Drug Discovery and Medical Care. At the facility, researchers from Hokkaido University and private companies work closely together in promoting cutting-edge interdisciplinary education and research through industry-academia collaboration.



#### West Bldg.

#### 2F and 3F Space for Undergraduate Medical Students and Others

This space includes seminar rooms for students and staff of the School of Medicine (Faculty of Medicine and Faculty of Health Sciences), the School of Dental Medicine and the School of Pharmaceutical Sciences and Pharmacy. It is also used as a venue for practical training, conferences, self-study and other events for staff of Hokkaido University Hospital.



Established in 1921, Hokkaido University Hospital provides high-quality medicine, trains competent medical professionals, promotes advanced medical technology, and seeks to contribute to the health and well-being of the community.

## (Medical Clinical Department)

Clinical Sections	Number of Beds	Number of Patients (FY 2021)	
		Out-Patients	In-Patients
Respiratory Medicine	48	21,410	19,848
Rheumatology and Nephrology / Diabetes and Endocrinology	49	56,818	14,170
Gastroenterology and Hepatology	48	41,100	16,258
Cardiovascular Medicine	35	18,793	10,537
Hematology	40	14,542	12,598
Medical Oncology	21	6,062	6,152
Gastroenterological Surgery I	47	9,909	13,838
Gastroenterological Surgery II	29	5,218	9,226
Cardiovascular and Thoracic Surgery	32	6,143	8,673
Orthopedic Surgery	59	27,564	17,996
Urology	33	21,695	10,816
Anesthesiology	2	19,284	0
Plastic Surgery	25	7,706	5,991
Breast Surgery	6	5,542	1,191
Emergency Medicine	15	3,194	5,074
Neurological Medicine	25	13,701	7,254
Ophthalmology	35	35,384	11,322
Otolaryngology-Head and Neck Surgery	38	16,152	9,877
Dermatology	23	16,094	7,236
Psychiatry and Neurology	70	36,685	13,293
Neurosurgery	39	9,704	11,303
Rehabilitation and Physical Medicine	20	57,444	687
Obstetrics	42	8,424	10,429
Gynecology	32	21,727	8,401
Pediatrics	33	18,503	9,029
Radiation Oncology	18	20,501	4,604
Diagnostic and Interventional Radiology	1	56,256	143
Nuclear Medicine	9	5,180	1,325
Surgical Pathology	-	-	-
Intensive Care Unit (ICU)	8	0	(2,193)**
High Care Unit (HCU)	5	0	(1,613)**
Neonatal Intensive Care Unit (NICU)	9	0	(2,635)**
Growing Care Unit (GCU)	(11)*	0	(1,760)**
Maternal Fetal Intensive Care Unit (MFICU)	(3)*	0	(815)**
Highly Qualified Clean Ward	6	0	(1,253)**
<b>TOTAL</b>	<b>902</b>	<b>580,735</b>	<b>247,271</b>

\* Beds within Obstetrics section.

\*\* Patients from each clinical section.



## (Dental Clinical Department)

Clinical Sections	Number of Beds	Number of Patients (FY 2021)	
		Out-Patients	In-Patients
Preventive Dentistry	23	6,993	5,321
Operative Dentistry		11,701	
Periodontics		20,900	
Removable Prosthodontics		14,210	
Crown and Bridge Prosthodontics		11,855	
Gerodontology		13,126	
Orthodontics		13,222	
Dentistry for Children and Disabled Persons		9,895	
Oral Medicine		18,680	
Oral and Maxillofacial Surgery		12,516	
Dental Radiology		1,911	
Dental Anesthesiology		3,627	
Center for Advanced Oral Medicine		8,400	
Division for General Dentistry		2,980	
<b>TOTAL</b>	<b>23</b>	<b>150,016</b>	<b>5,321</b>

Clinical Section	Number of Beds	Number of Patients (FY 2021)	
		Out-Patients	In-Patients
<b>GRAND TOTAL</b>	<b>925*</b>	<b>730,751</b>	<b>252,592</b>

\*The number of the registered beds is 944.



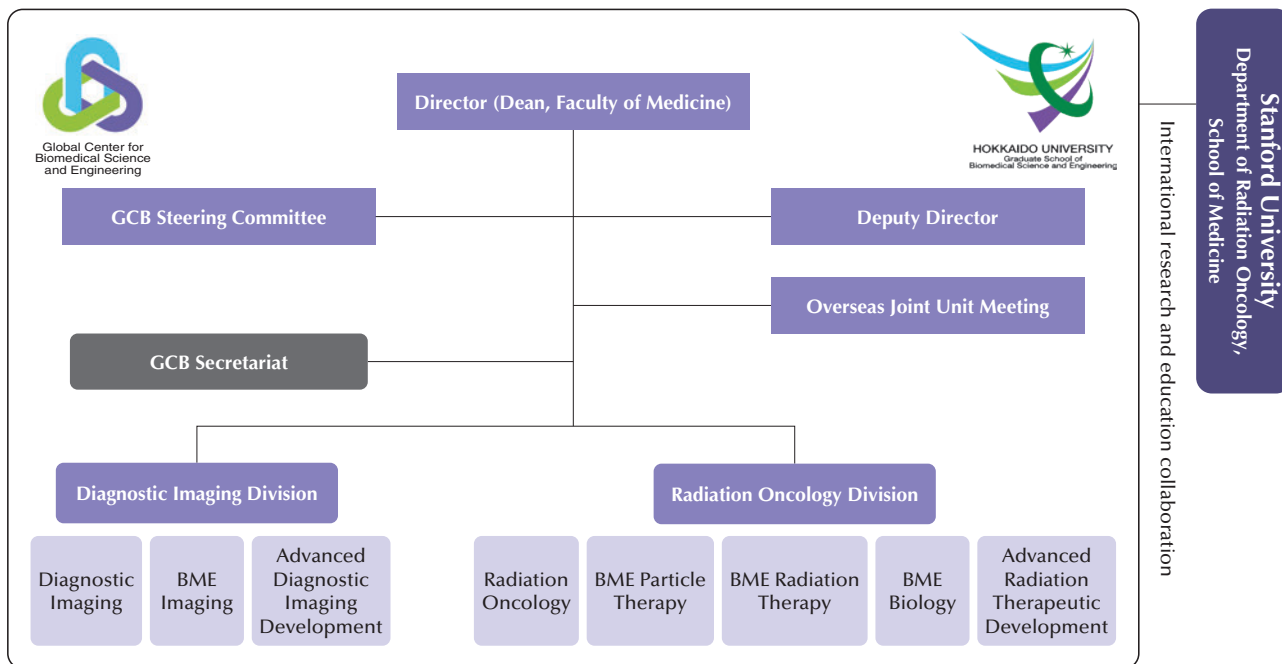


# Global Center for Biomedical Science and Engineering (Established: April 1, 2020)

The Global Center for Biomedical Science and Engineering (GCB) took over the activities of the Global Station for Quantum Medical Science and Engineering at the Global Institute for Collaborative Research and Education (GI-CoRE), which had operated as an organization under the direct control of the President for six years since its establishment in April 2014. In collaboration with world's leading universities and research institutes, including Stanford University, the GCB is engaged in research of "radiation therapy and particle beam radiation therapy utilizing quantum, atom- and accelerator-related quantum science and engineering knowledge and technology

in medicine," as well as "molecular imaging, molecular biology, and radiation biology for scientific knowledge and technology of molecular behavior in the living body in medicine." The aim is also to develop individuals with an international perspective who can conduct research/development and quality control of medical devices and technologies founded on science and engineering at the Graduate School of Biomedical Science and Engineering. The GCB has also been certified as a "GI-CoRE Cooperating Hub" and continues research and education activities in collaboration with GI-CoRE.

## Organizational structure of the Global Center for Biomedical Science and Engineering, Faculty Medicine



Abbreviation: BME, Biomedical Science and Engineering

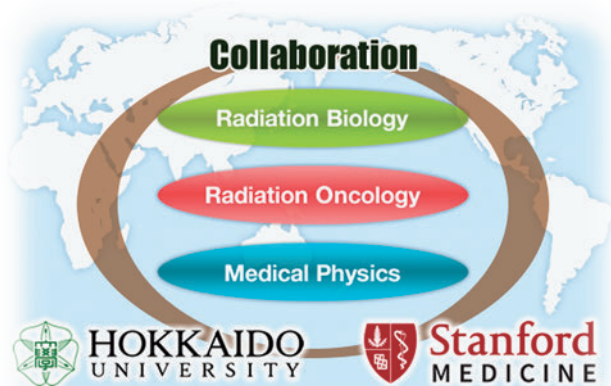
### Mission

- (1) Implementation of biomedical science and engineering research and education
- (2) Research/development and quality control of medical devices and technologies founded on science and engineering
- (3) International collaborative educational programs
- (4) Facility cooperation with domestic and overseas universities and research institutes
- (5) Other medical science and engineering education and research/development

### Steering Committee

#### Responsibilities

- (1) Personnel affairs of faculty members
- (2) Budget and settlement
- (3) International collaborative education programs (including Summer Institute and Summer School)
- (4) Other important matters related to the center



医理工学  
グローバルセンター  
Global Center for  
Biomedical Science and Engineering

# Educational and Research Support

## Public Relations Office (Established: April 1, 2007)

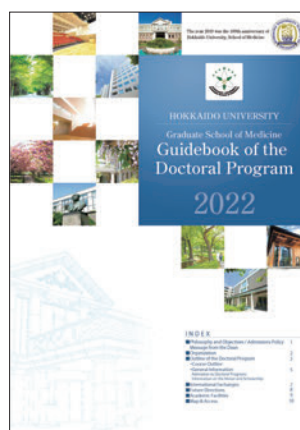
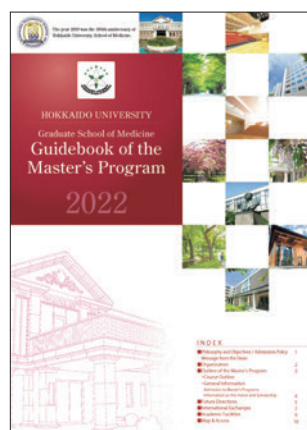
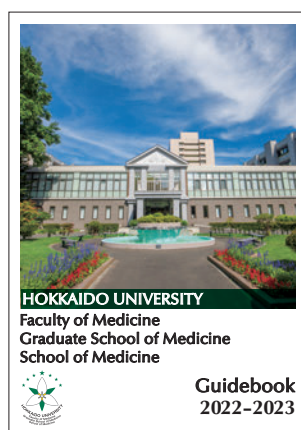
### Objectives and Activity Outline

The Public Relations Office was established to support proactive and effective academic public relations and outreach activities for the Faculty of Medicine, the Graduate School of Medicine and the School of Medicine.

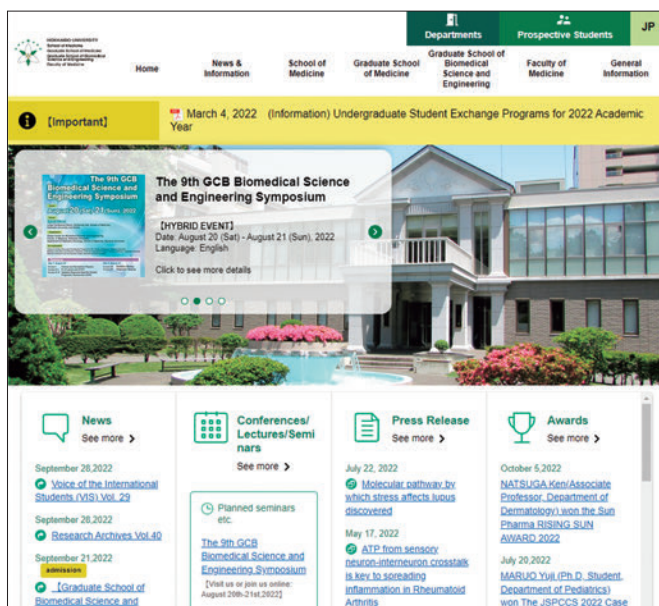
Specifically, the Office primarily works to improve information environments through website management/administration and the planning/production of a variety of public relations media as well as planning/drafting public relations activities for the Faculty of Medicine, the Graduate School of Medicine and the School of Medicine as a whole.

### ● Official media produced, managed and administered by the Public Relations Office

- Guidebook of the Faculty of Medicine / Graduate School of Medicine / School of Medicine
- Guidebook of the Master's Program
- Guidebook of the Doctoral Program
- Guidebook of the School of Medicine
- DVD outlining the School of Medicine
- Videos outlining the School of Medicine
- Website of Faculty of Medicine / Graduate School of Medicine / Graduate School of Biomedical Science and Engineering / School of Medicine, Hokkaido University



Guidebooks



Website of Faculty of Medicine / Graduate School of Medicine / Graduate School of Biomedical Science and Engineering / School of Medicine, Hokkaido University



DVD outlining the School of Medicine

## Research Strategy Office (Established: April 1, 2014)

### Objectives and Activity Outline

The Research Strategy Office was established to ensure efficient promotion and smooth implementation of research activities at the Faculty of Medicine, the Graduate School of Medicine and the School of Medicine through related planning and drafting based on

the research strategies of Hokkaido University.

The Office also promotes and supports: 1. research concepts for the future; 2. research support systems; 3. research projects; 4. government-industry-academia collaboration; 5. medium-term and annual plans; and 6. matters regarding research budgets.

## Official Publications

Title	Publication Frequency	Year and Month of Latest Publication
Guidebook of the Faculty of Medicine/Graduate School of Medicine/School of Medicine (Japanese ver./English ver.)	Annual	September/ November 2022
Newsletter of the Faculty of Medicine/Graduate School of Medicine/School of Medicine	3 times a year	November 2022
Activity Report of the Graduate School of Medicine/School of Medicine	Occasional	2004 Edition
DVD outlining the School of Medicine	Occasional (e.g., years when courses are reorganized)	July 2017
Videos outlining the School of Medicine (Japanese ver./English ver.)	Occasional	October 2018
Guidebook of the Master's Program (Japanese ver./English ver.)	Annual	May/July 2022
Guidebook of the Doctoral Program (Japanese ver./English ver.)	Annual	May/July 2022
Syllabus of the Graduate School of Medicine Master's Program (English and Japanese)	Annual	2022 Edition
Syllabus of the Graduate School of Medicine Doctoral (PhD) Program (English and Japanese)	Annual	2022 Edition
Graduate School of Medicine (Master's Program/Doctoral Program) Student Handbook	Annual	2022 Edition
Guidebook of the School of Medicine	Annual	June 2022
Student Life in Tandem with Medical Science	Annual	2022 Edition
Voice of the International Students (VIS) Newsletter of the International Relations Division (English and Japanese)	Several times a year	October 2022
Outline of the Research Center for Cooperative Projects and its Achievements	Annual	March 2022

## Press Release (Academic 2021)

Press Release Title	Researcher	Release Date
A novel, quick, and easy system for genetic analysis of SARS-CoV-2	Professor FUKUHARA Takasuke	Apr. 13, 2021
A rapid antigen test for SARS-CoV-2 in saliva	Professor TESHIMA Takanori Associate Professor YOKOTA Isao	May 20, 2021
Hair follicles heal blisters at personal cost	Associate Professor NATSUGA Ken	Jun. 14, 2021
CT scans suggest possible lung destruction in some asthmatics	Professor KONNO Satoshi Specially Appointed Assistant Professor SHIMIZU Kaoruko	Aug. 25, 2021
Revealed: How SARS-CoV-2 evades our immune system	Professor KOBAYASHI Koichi	Dec. 07, 2021
Simulation training helps hone advanced surgical skills, international trial finds	Associate Professor ABE Takashige	Feb. 07, 2022
New gene targets for treating adult blood cancer	Assistant Professor NAKAGAWA Masao	Mar. 31, 2022

## Awards (Academic 2021)

Name of Award	Job Title / Students Status	Awardee	AY 2020 Affiliation	Award Date
Modern Rheumatology Case Reports Top Reviewer Award 2021	Lecturer	KATO Masaru	Internal Medicine II*	Apr. 25, 2021
	Assistant Professor	FUJIEDA Yuichiro	Internal Medicine II*	Apr. 25, 2021
European Society for Sports Traumatology, Knee Surgery and Arthroscopy (ESSKA) 2021 Virtual Conference Best Poster	Clinical Fellow	SUZUKI Yuki	Orthopedic Surgery*	May 15, 2021
Association for European Pediatric and Congenital Cardiology (AEPCC) 2021 Young Investigator Award	Clinical Fellow	SASAKI Daisuke	Pediatrics*	May 25, 2021
LUTS: Lower Urinary Tract Symptoms Top Reviewer Award for 2020	Associate Professor*	KITTA Takeya	Renal and Genitourinary Surgery	May 26, 2021
NASS (North American Spine Society) 2021 Annual Meeting Best Paper	Visiting Researcher	KOKABU Terufumi	Orthopedic Surgery	Jun. 4, 2021
Neurotrauma 2021 Virtual Meeting - The 38th Annual Symposium of the National Neurotrauma Society Family Care Grant	Clinical Fellow	SUZUKI Yuki	Orthopedic Surgery*	Jul. 12, 2021
North American Spine Society (NASS) 2021 Annual Meeting Resident & Fellow Research Award	Visiting Researcher	KOKABU Terufumi	Orthopedic Surgery	Jul. 21, 2021
Federation of European Neuroscience Societies (FENS) European Journal of Neuroscience (EJN) Best Publication Award	Assistant Professor	HONMA AYA	Otolaryngology*	Aug. 25, 2021
International Society for Environmental Epidemiology 2021, John Goldsmith Award	Distinguished Visiting Professor	KISHI Reiko	Center for Environmental and Health Sciences	Aug. 26, 2021
Asian Society of Magnetic Resonance in Medicine (ASMRM) 2021 & JSMRM2021 Research Encouragement Award	Associate Professor	Khin Khin Tha	Global Center for Biomedical Science and Engineering	Oct. 8, 2021
IASGO-CME (International Association of Surgeons, Gastroenterologists and Oncologists-Continuing Medical Education) 2021 Best Poster Award	Clinical Fellow	AIYAMA Takeshi	Gastroenterological Surgery I*	Oct. 9, 2021
	Clinical Fellow	MATSUI Hiroki	Gastroenterological Surgery I*	Oct. 9, 2021
The 60th International Spinal Cord Society Annual Scientific Meeting (ISCoS 2021: VIRTUAL) The Hans Frankel Awards Student Trainee Award	Doctoral student	SOTOME Akihito	Orthopedic Surgery	Oct. 27, 2021
The 25th Congress of the Asian Pacific Society of Respiratory (APSR 2021) Assembly Education Award (Pulmonary Circulation Assembly)	Clinical Fellow	SUGIMOTO Ayako	Internal Medicine I*	Nov. 21, 2021
The 25th Congress of the Asian Pacific Society of Respiratory (APSR 2021) JRS Young Scientist Award	Lecturer*	SUZUKI Masaru	Internal Medicine I*	Nov. 21, 2021
107th Scientific Assembly and Annual Meeting of the Radiological Society of North America Certificate of Merit awards	Assistant Professor	MORITA Ryo	Diagnostic Imaging	Nov. 28, 2021

\* Clinical Section of Hokkaido University Hospital

\*\* Specially appointed academic staff

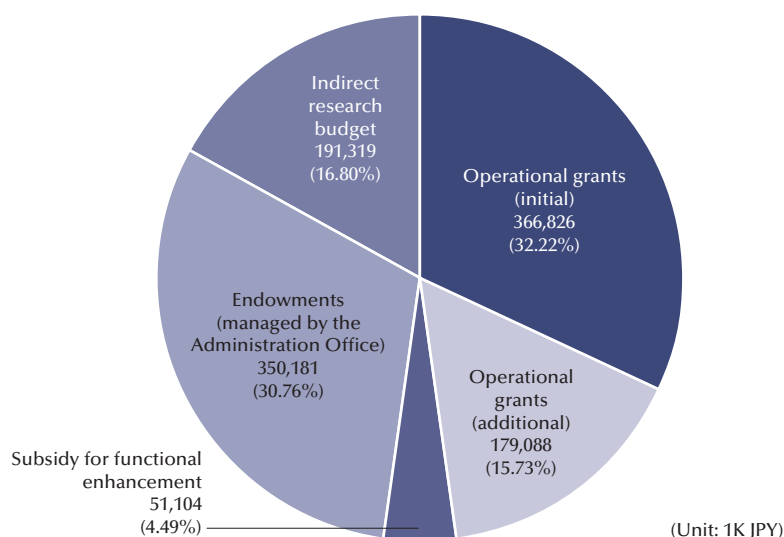




# Total Revenue and Expenditure in Fiscal 2021

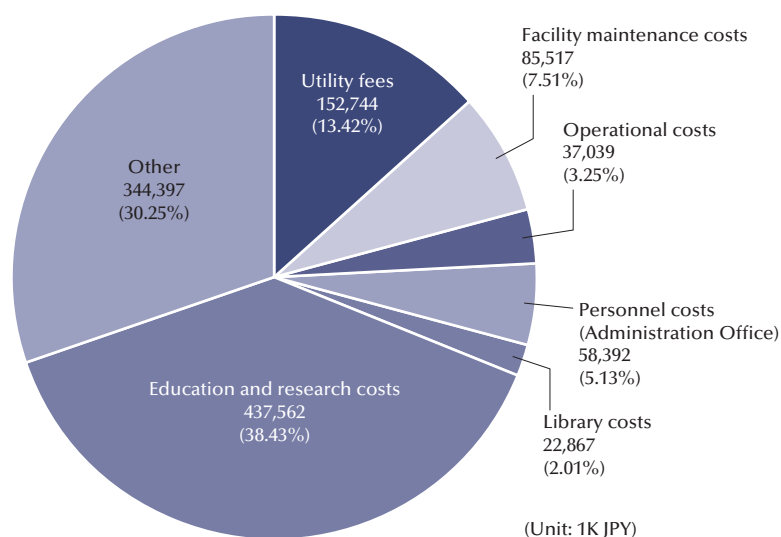
## Revenue

1,138,518 (Thousand yen)



## Expenditure

1,138,518 (Thousand yen)



## Grants-in-Aid for Scientific Research, etc.

2021 Fiscal Year  
(Unit: 1K JPY)

Category	Faculty of Medicine		Hokkaido University Hospital	
	Number of Grants	TOTAL	Number of Grants	TOTAL
Grants-in-Aid for Scientific Research	43	298,940	7	19,600
Grant-in-Aid for Scientific Research (Multi-year Fund)	132	212,290	113	173,940
Health, Labour and Welfare Sciences Research Grant	0	0	17	22,550
Joint Research	41	164,985	47	324,948
Consigned Research *1	108	1,147,318	74	201,519
Other Grants-in Aid (Competitive Funds)	14	103,769	39	4,641,345
Income of Other Funded Research *2	-	178,545	349	805,391
Income of Endowments for Research	455	616,292	255	298,131

\*1 Includes competitive funds

\*2 Includes Clinical Study of Pharmaceutical Products, Inception Fee of Pathological Materials, etc.

# Number of Students

Data as of May 1, 2022

( ): number of female students included; < >: ratio of female students  
[ ]: capacity of students transferring into the 2nd year (not included in unbracketed numbers)  
【 】: number of students in Nitobe College (included in unbracketed numbers)  
The table includes international students.

## School of Medicine

Enrollment Limit	Number of Students							Research Students	Special Auditors	TOTAL
	1st Year	2nd Year	3rd Year	4th Year	5th Year	6th Year	Subtotal			
107 [5]	–	111【7】	125【1】	108【1】	112【2】	124【4】	580【15】 (131(22.6%))	4*	0	584 (131(22.4%))

With the introduction of a new entrance examination system, freshmen belong to the First Year Education Division.

\*The research student is supervised by an advisor affiliated to Hokkaido University Hospital.

## Graduate School of Medicine

Classification	Master's Program				Doctoral Program						Research Students	Special Research Students	TOTAL
	Enrollment Limit	Number of Students			Enrollment Limit	Number of Students							
		1st	2nd	Subtotal		1st	2nd	3rd	4th	Subtotal			
Graduate School of Medicine	20	0 23	26	49 ( 21(42.9%))	90	101	97	95	135	428 (104(24.3%))	0	5 (1)	482 (126(26.1%))
Faculty of Medicine	–	–	–	–	–	–	–	–	–	–	14 (8)	0	14 ( 8(57.1%))
Graduate School of Medicine (before reorganization)	–	–	–	–	–	–	–	–	33	33 ( 7(21.2%))	0	0	33 ( 7(21.2%))
TOTAL	20	23	26	49 ( 21(42.9%))	90	101	97	95	168	461 (111(24.1%))	14 (8)	5 (1)	529 (141(26.7%))

Upper number for Master's Course>Graduate School of Medicine is the number of students enrolled in a 1 year program.

The former Graduate School of Medicine (before reorganization) stopped accepting student applications in April 2017.

# Number of Enrolled Students (Academic 2022)

( ): number of female students included  
[ ]: Number of Japanese students who were educated abroad indicated in brackets.  
This number is counted independently to the number outside of the brackets.

## School of Medicine

Enrollment Limit		Applicants	Successful Candidates	Enrolled Students	International Students
General	92	315 [4]	98	97 (22)	0
Comprehensive	5	9	0	0	
TOTAL	97	324 [4]	98	97 (22)	0

Students enrolled in autumn are not included

( ): number of female students included  
[ ]: number of international students included

## Graduate School of Medicine

Division		Enrollment Limit	Number of Applicants				Number of Enrolled Students			
			From Hokkaido University	From Other Universities	Mature Applicants, etc.	TOTAL	From Hokkaido University	From Other Universities	Mature Applicants, etc.	TOTAL
Master's Program	Division of Medical Science	20	9 ( 3) ( 1)	14 (5) (2)	0	23 ( 8) ( 3)	9 ( 3) ( 1)	11 ( 3) ( 2)	0	20 ( 6) ( 3)
Doctoral Program	Division of Medicine	90	67 (16) ( 2)	26 (4)	0	93 (20) ( 2)	63 (15) ( 2)	23 ( 4)	0	86 (19) ( 2)

# Number of Graduates (Degrees Granted)

Data as of May 1, 2022

## ■ Undergraduate Course

Degree	New System (after the 1991 revision to the Hokkaido University Regulations Concerning Academic Degrees)		Degree	New System (before the 1991 revision to the same Regulations)	Old System	Overall
	Academic 2021 (graduates in March 2022)	Cumulative Total				
Doctor of Medicine	103	3,218	Doctor of Medicine	3,820	2,328	9,366

Professional School of Medicine (1939 - 1950)  
Number of Graduates 949

## ■ Master's Program

Classification	Degree	New System (after the 1991 revision to the Hokkaido University Regulations Concerning Academic Degrees)	
		Academic 2021	Cumulative Total
Graduate School of Medicine	Master of Medical Sciences	11	59
	Master of Public Health	6	36
Graduate School of Medicine (before reorganization)	Master of Medical Sciences	—	357
TOTAL		17	452

## ■ Doctoral Program

Classification	Degree	New System (after the 1991 revision to the Hokkaido University Regulations Concerning Academic Degrees)				Degree	New System (before the 1991 revision to the same Regulations)		Old System	Overall
		Graduates from Graduate School		Granted by Merit Thesis			Graduates from Graduate School	Granted by Merit Thesis		
		Academic 2021	Cumulative Total	Academic 2021	Cumulative Total					
Graduate School of Medicine	Doctor of Philosophy	81	118	3	4					122
Graduate School of Medicine (before reorganization)		12	1,951	0	736	Doctor of Medicine	658	964	3,081	7,390



# Post-graduation Statistics

Data as of May 1, 2022

## School of Medicine

Number of Graduates AY2020	Breakdown of Post-graduation Paths in AY2021			
	Proceeding to Higher Education	Employment	Clinical Residents	Other
103	1	0	95	7

## Master's Program

Number in brackets [ ] indicates the number of newly employed graduates in the private sector in Hokkaido  
Number in parentheses < > indicates the percentage of newly employed graduates in the private sector in Hokkaido

Classification	Number of Graduates AY2021	Breakdown of Post-graduation Paths in AY2021									
		Proceeding to Higher Education	Newly Employed Graduates								Other
			Research Institute	Hospitals (medical technician, pharmacist, etc.)	Pharmaceutical Company (researcher, MR, etc.)	Medical-related Company (R&D, technical specialist, etc.)	Other Companies (technical specialist, etc.)	Government	Other	TOTAL	
Graduate School of Medicine	16	7	1 [1]	1 [1]	1	1	1	0	1 [1]	6 [ 3 (50.0%)]	3
Public Health Course (one-year course), Graduate School of Medicine	1	0	0	1	0	0	0	0	0	1 [ 0 ( 0.0%)]	0
TOTAL	17	7	1 [1]	2 [1]	1	1	1	0	1 [1]	7 [ 3 (42.9%)]	3

## Doctoral Program

Classification	Number of Graduates AY2021	Breakdown of Post-graduation Paths in AY2021													Other
		Proceeding to Higher Education	Newly Employed Graduates												
			Universities		University Hospitals		General Hospitals		Public Sector	Private Sector	Research Institution	Study Abroad	Leaving for Home Countries (International students)	TOTAL	
			Faculty Member	Research-ers	Medical Doctors	Medical Technicians	Medical Doctors	Medical Technicians							
Graduate School of Medicine	80	0	5 [2]	2	24 [3]	1 [1]	36 [5]	0	0	2	0	0	1 [1]	71 [12] < 16.9%	9
Graduate School of Medicine (before reorganization)	11	0	1	1	1	0	8 [1]	0	0	0	0	0	0	11 [1] < 9.1%	0

# National Examination for Medical Practitioners Results

(implemented in February 2022)

	New Graduates				Past Graduates				TOTAL			
	Examinees	Successful Applicants	Pass Rate	Average National Pass Rate	Examinees	Successful Applicants	Pass Rate	Average National Pass Rate	Examinees	Successful Applicants	Pass Rate	Average National Pass Rate
116th Examination	102	97	95.1%	95.0%	4	0	0.0%	54.0%	106	97	91.5%	91.7%

History

Philosophy and Objectives

Past and Present Deans and Directors

Professors Emeriti

Honor Roll

Organizations / Finances

Students

International Affairs

Endowed Depts. and Industry Creation Depts.

Education and Research System

Campus



# "Frate" Activities

Data as of July 1, 2022

Officially Authorized Organizations (academic 2022)

Cultural Activities
"Frate" Editorial Office
Eastern Medicine
International Federation of Medical Student Association
Ensemble Frate
The Band Club of Hokkaido University School of Medicine
Medical Entrepreneur Training Huddle (METH)

Athletic Activities		
Tennis	Badminton	Handball
Soft-ball Tennis	Mountain Climbing	Volleyball
Baseball	Ice Hockey	Golf
Table Tennis	Skiing	Kyudo (Japanese Archery)
Basketball	Kendo (Japanese Fencing)	Track and Field
Football	Rowing	Judo
Rugby*	Swimming	*Temporarily closed

## Cultural Activities



"Frate" Editorial Office



International Federation of Medical Student Association



Ensemble Frate



The Band Club of Hokkaido University School of Medicine

## Athletic Activities



Tennis



Soft-ball Tennis



Baseball



Table Tennis



Basketball



Football





Rugby\*



Badminton



Mountain Climbing



Ice Hockey



Skiing



Kendo (Japanese Fencing)



Rowing



Swimming



Handball



Golf



Kyudo (Japanese Archery)

## The Frate Festival

Host: School of Medicine; co-hosts: School of Medicine Alumni Association, School of Medicine Students' Association, Hokkaido University Hospital

This festival has been held since 2007 with the aim of promoting friendly relations with alumni, students' relatives and others related to the School of Medicine, and deepening people's understanding of the school's activities.



Part 1. Campus tour (various spots on campus)



Part 1. School of Medicine tour (tour of research facilities, simulation)



Part 2. Lecture meeting (special lectures in addition to reports on the current situation of the school and hospital from the Dean of the school and the Director of the hospital)

## Student and Staff Meeting

A convivial meeting of students and teaching staff aimed at contributing to campus life. Intended for 1st-, 2nd- and 4th-year students.



## Medical Festival

Medical students demonstrate various examinations to the visitors.



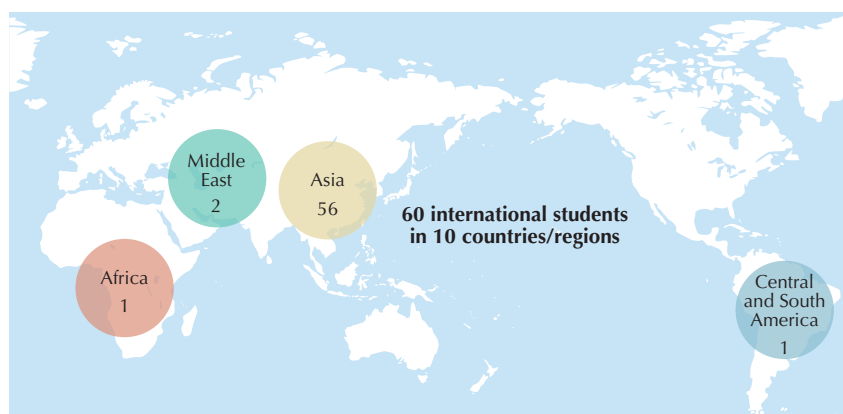
# Number of International Students

Data as of May 1, 2022

## Distribution by Country/Region

Area	Country/Region	Number
Asia 56 students 93.33%	Bangladesh	2
	China	50
	Indonesia	1
	Malaysia	1
	Taiwan	1
	Vietnam	1
Central and South America 1 student 1.66%	Argentina	1

Area	Country/Region	Number
Middle East 2 students 3.33%	Afghanistan	1
	Syria	1
Africa 1 student 1.66%	Egypt	1
TOTAL		60
International Students (Other visa status)		8



## Distribution within Graduate School/Faculty/School of Medicine

( ): number of female students included

Undergraduate	Graduate		Research Student	Special Research Student	Special Audit Student	Total of Int'l Students	Total of Int'l Students (Other visa status)	TOTAL (All International Students)
	Master's Program	Doctoral Program						
0	6 ( 5)	39 (19)	13 ( 8)	2 ( 1)	0	60 (33)	8 ( 4)	68 (37)

## Methods of Financial Support

( ): number of female students included

	Undergraduate	Graduate	Other	TOTAL
Japanese government	0	6 ( 3)	1 ( 1)	7 ( 4)
Self-Supported	0	37 (19)	14 ( 8)	51 (27)
Foreign government	0	2 ( 2)	0	2 ( 2)
TOTAL	0	45 (24)	15 ( 9)	60 (33)
International Students (Other visa status)	4 ( 3)	4 ( 1)	0	8 ( 4)
<b>GRAND TOTAL (All International Students)</b>	<b>4 ( 3)</b>	<b>49 (25)</b>	<b>15 ( 9)</b>	<b>68 (37)</b>

## Overseas Researchers Hosted (academic 2021)

Classification	Area	Country/Region	Number
Visiting Overseas Researchers			0
Bilateral Programs (JSPS)			0
Invitation Fellowships for Research in Japan (JSPS)	Europe	Russia	1
TOTAL			1

# International Academic Exchanges

Data as of May 1, 2022

## ■ Inter-University Exchange Agreements (Department in charge: Faculty of Medicine) (9 Agreements, 7 Countries/Regions)

Country/Region		Counterpart	Concluded	Contents of the Agreements
Asia	India	University of Delhi	Feb. 26, 2010	<ul style="list-style-type: none"><li>· Exchange of faculty members and research fellows</li><li>· Exchange of students</li><li>· Exchange of academic materials, publications and information</li><li>· Conducting joint research projects and organizing symposia</li></ul>
	Philippines	De La Salle University	Jan. 11, 2009	
	Taiwan	Taipei Medical University	Aug. 28, 2015	
		China Medical University	Jun. 21, 2018	
	Thailand	Mahidol University	Nov. 26, 2008	
Europe	Switzerland	University of Geneva	Jun. 7, 2005	
Middle East	United Arab Emirates	United Arab Emirates University	Jul. 19, 2017	
Africa	Nigeria	University of Nigeria	Jan. 30, 2009	
		Ebonyi State University		

## ■ Departmental Exchange Agreements (24 Agreements, 15 Countries/Regions)

A=Academic exchange, S=Student exchange, J=Joint seminar, L=Library exchange

Country/Region		Counterpart	Concluded	Content
Asia	China	Harbin Medical University	Feb. 26, 1985	A
		Peking Union Medical College	Jul. 14, 1994	A
		Chinese University of Hong Kong Faculty of Medicine	Nov. 1, 2016	S
	Korea	Gyeongsang National University School of Medicine, College of Medicine	Jul. 6, 2015	A, S
		Kyungpook National University School of Medicine	Sep. 27, 2016	A, S
		Korea University College of Medicine	Mar. 11, 2019	A, S
	Malaysia	University of Malaya Faculty of Medicine	Aug. 29, 2017	A, S
	Singapore	National University of Singapore Yong Loo Lin School of Medicine	May 22, 2015	S
		Nanyang Technological University Lee Kong Chian School of Medicine	Sep. 15, 2016	A, S
	Taiwan	Taipei Medical University College of Medicine, College of Nursing, College of Public Health and Nutrition, College of Medical Science and Technology	Dec. 21, 2012	A, S
		National Taiwan University College of Medicine	Sep. 12, 2016	A, S
		National Yang Ming Chiao Tung University School of Medicine	Mar. 15, 2017	A, S
		China Medical University School of Medicine	Sep. 26, 2016	A, S
Europe	Austria	International Atomic Energy Agency	Nov. 29, 2018	A, J
	Czech	Charles University in Prague First Faculty of Medicine	Sep. 8, 2008	A, S
	Finland	University of Eastern Finland Faculty of Health Sciences	Nov. 29, 2016	S
	Germany	Universität Hamburg Faculty of Medicine	Jan. 29, 2018	A, S
		Ludwig-Maximilians-Universität München Faculty of Medicine	Jan. 30, 2018	A, S
	Iceland	University of Iceland Faculty of Medicine	Jun. 23, 2015	A, S
	Italy	University of Verona School of Medicine	Dec. 21, 2017	A, S
	Spain	University of Barcelona Faculty of Medicine and Health Science	Feb. 2, 2016	A, S
North America	U.S.A.	University of Illinois at Chicago	Feb. 15, 2016	A
Middle East	Turkey	Dokuz Eylul University Faculty of Medicine	Oct. 24, 2011	A, S
	United Arab Emirates	United Arab Emirates University College of Medicine and Health Sciences	Nov. 7, 2016	A, S

History

Philosophy and  
Objectives

Past and Present  
Deans and  
Directors

Professors  
Emeriti

Honor Roll

Organizations /  
Finances

Students

International  
Affairs

Endowed Depts.  
and Industry  
Creation Depts.

Education and  
Research  
System

Campus



# Endowed Departments

Data as of July 1, 2022

Number of Departments: 10

Department	Period	Endower
Advanced Medicine for Spine and Spinal Cord Disorders	Apr. 1, 2009 - Mar. 31, 2023	Robert Reid Inc.
Ocular Circulation and Metabolism	Apr. 1, 2010 - Mar. 31, 2024	Nidec Co., Ltd.
Transplant Surgery	Jan. 1, 2011 - Dec. 31, 2025	Medical System Network Co., Ltd. Mutoh Co., Ltd.
Minimally Invasive Advanced Heart Failure Therapeutics	Sep. 1, 2018 - Aug. 31, 2024	Win International Co., Ltd. Medtronic Japan Co., Ltd.
Innovative Heart Failure Telemedicine	Sep. 1, 2018 - Aug. 31, 2024	Medtronic Japan Co., Ltd. Biotronik Japan, Inc.
Community Heart Failure Healthcare and Pharmacy	Apr. 1, 2019 - Mar. 31, 2024	Medical System Network Co., Ltd. Hokuyaku Takeyama Holdings, Inc.
Respiratory and Cardiovascular Innovative Research	Apr. 1, 2020 - Mar. 31, 2023	Nippon Shinyaku Co., Ltd. Nippon Boehringer Ingelheim Co., Ltd. Mochida Pharmaceutical Co., Ltd.
Advanced Diagnostic Imaging Development	Apr. 1, 2020 - Mar. 31, 2023	Philips Japan, Ltd. Bathclin Corporation
Community Urological Healthcare System	Apr. 1, 2021 - Mar. 31, 2024	Hokkaido Welfare Federation of Agricultural Cooperatives Amino Up Co., Ltd.
International Hematopoietic Cell Transplantation	Jun. 1, 2022 - May 31, 2024	International Advanced Medical Organization

# Industry Creation Departments

Data as of July 1, 2022

Number of Departments: 3

Department	Period	Enterprise
Advanced Research for Locomotor System	Apr. 1, 2019 - Mar. 31, 2023	Hitachi High-Technologies Corporation
Functional Reconstruction for the Knee Joint	Jun. 1, 2019 - May 31, 2023	Olympus Terumo Biomaterials Corp.
Biomaterial Function Regeneration	Jul. 1, 2019 - Jun. 30, 2023	Mochida Pharmaceutical Co., Ltd.



# Master's Program, Graduate School of Medicine

## ■ Medical Science Course

**This course aims to produce specialists with a wide range of knowledge who will play active roles in medicine and life science.**

In addition to required core subjects, students learn basic medical science research methods that provide the knowledge and skills required for medical research through experiential learning, as well as they study and practice oral and written research presentation skills. Basic general medicine and basic medical research are offered to facilitate the development of specialists with the necessary broadly based knowledge that is expected.

## ■ Public Health Course (Two-Year Course)

**Public Health Course aims to develop human resources who are capable of playing active roles in addressing the challenges of public health with broad knowledge and high skills for the maintenance and improvement of the entire society and people's health, life and security.**

At this course, fundamental five disciplines (Epidemiology, Biostatistics, Social and Behavioral Sciences, Health Services Administration and Environmental Health Sciences), which comply with accreditation criteria of the Council on Education for Public Health in the United States, are provided as required subjects. Furthermore, by taking the elective subjects which would suit one's own interest, students acquire the ability required for experts.

## ■ Public Health Course (One-Year Course)

**This course is intended for medical doctors (i.e. licensed physicians), dentists, pharmacist and other professionals with certain amount of practical experience, and aims to train, in one year, highly specialized professionals who play active roles in medical and public health fields.**

This course enables completion of the course, which is practically the same as Two-Year Course, in one year. Students should pass the qualifying review and examination of the research achievements of specific assignment to complete.

---

# Doctoral Program, Graduate School of Medicine

## ■ Basic Medicine Course

**For future researchers and educators in medical/life sciences**

Students acquire broad expertise required to become independent researchers, learn various research approaches including techniques for designing experiments, and develop their research capabilities. They are also expected to acquire the competence and skills to apply and utilize their expertise to medical and life science fields with interdisciplinary approach.

## ■ Clinical Medicine Course

**For future clinicians who excel in clinical techniques and research competence**

Students will gain the research competence by applying methods targeting human rather than traditional methods using model animals or cells. This course provides the Clinical Collaborative Departments, where students can proceed their research in clinical medicine under multiple instructors including dedicated instructors and collaborative leading clinicians at institutions where advanced and specialized diagnoses, examinations and treatments are conducted.

## ■ Social Medicine Course

**For future professionals who undertake the task of improvement of health and safety at the regional and international levels**

Students start by learning research methods in social sciences including research ethics, basic and applied statistics, medical informatics and EBM (evidence-based medicine). This course emphasizes social medicine and preventive medicine, rather than biology and life science. Students aim at mastering the research approaches and skills that are necessary for research in public health and preventive medicine.

# Special Programs on the Doctoral Program

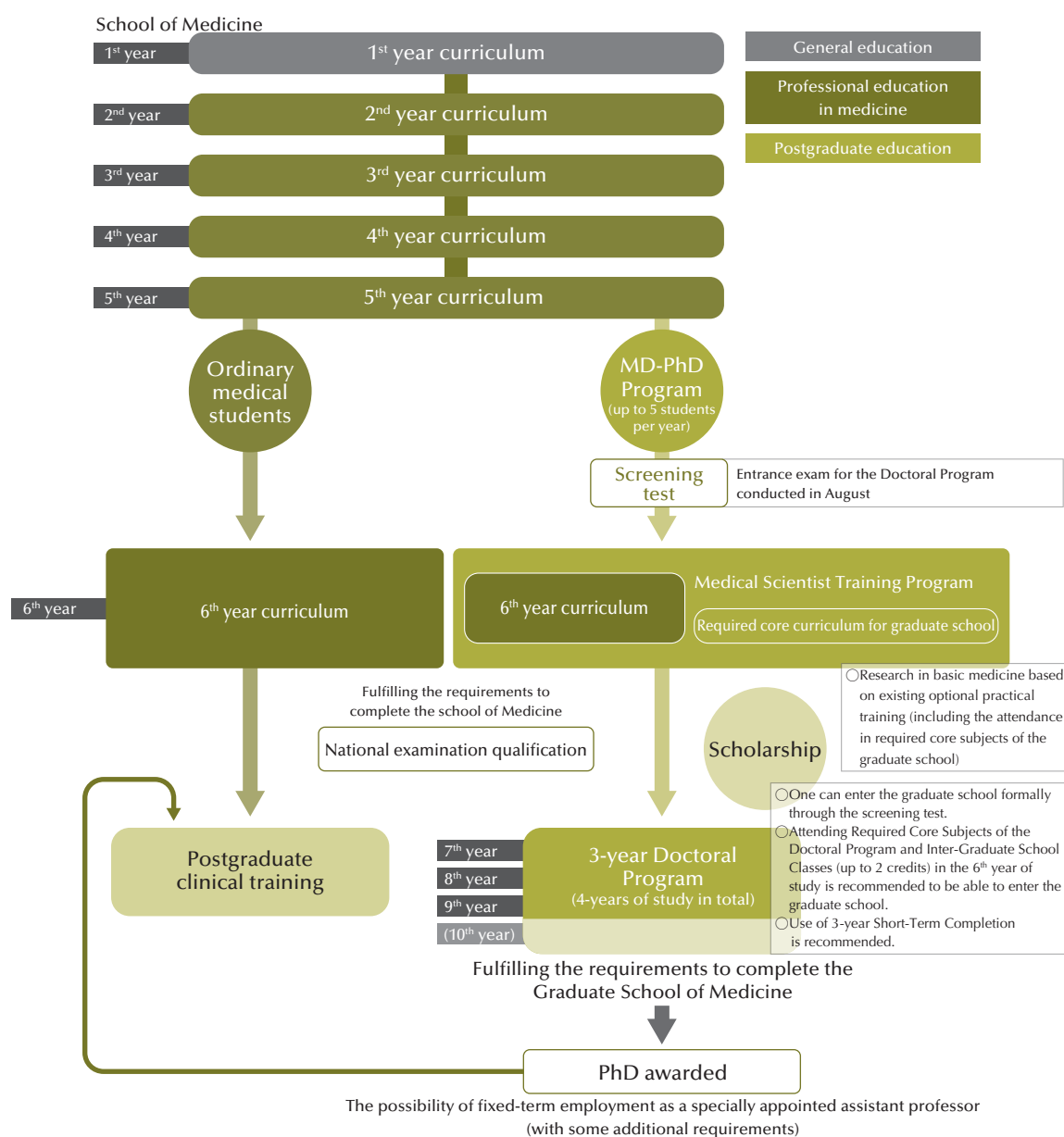
## ■ Medical Scientist Training Program (MD-PhD Program)

The objective of this program is to develop aspiring researchers in basic medicine who are able to respond to rapid advances in medicine and medical care, and social changes. To this end, the program allows 6th-year students at the School of Medicine, Hokkaido University who wish to become medical researchers to take required subjects (8 credits of Required Core Subjects of the Doctoral Program of the Graduate School) and Inter-Graduate School Classes (up to 2 credits) while enrolled in the study of the curriculum for 6th-year students in the School of Medicine. Students in the 5<sup>th</sup> and 6<sup>th</sup>

years of the School of Medicine may take the screening test for this program and, on passing, will receive a non-refundable scholarship (covering the examination fee for the Doctoral Program, admission fee and 3 years' tuition for the graduate school). While the student is in the 6<sup>th</sup> year, financial support will also be provided to the student's affiliated department aiming to subsidize the expenses to be incurred related to the student. Amount of the support is equivalent to the half years' tuition fee for the Graduate School of Medicine.

### Features

- Students can graduate from the School of Medicine in the same year as the students they were originally admitted with (and can take the national examination for medical practitioners).
- Scholarships equivalent to the admission fee and tuition are available.
- After earning the PhD, students may undertake postgraduate clinical training.
- A student who achieved outstanding research performance may be employed as a fixed-term, specially appointed assistant professor. (with some additional requirements)



## ■ CLARC Program

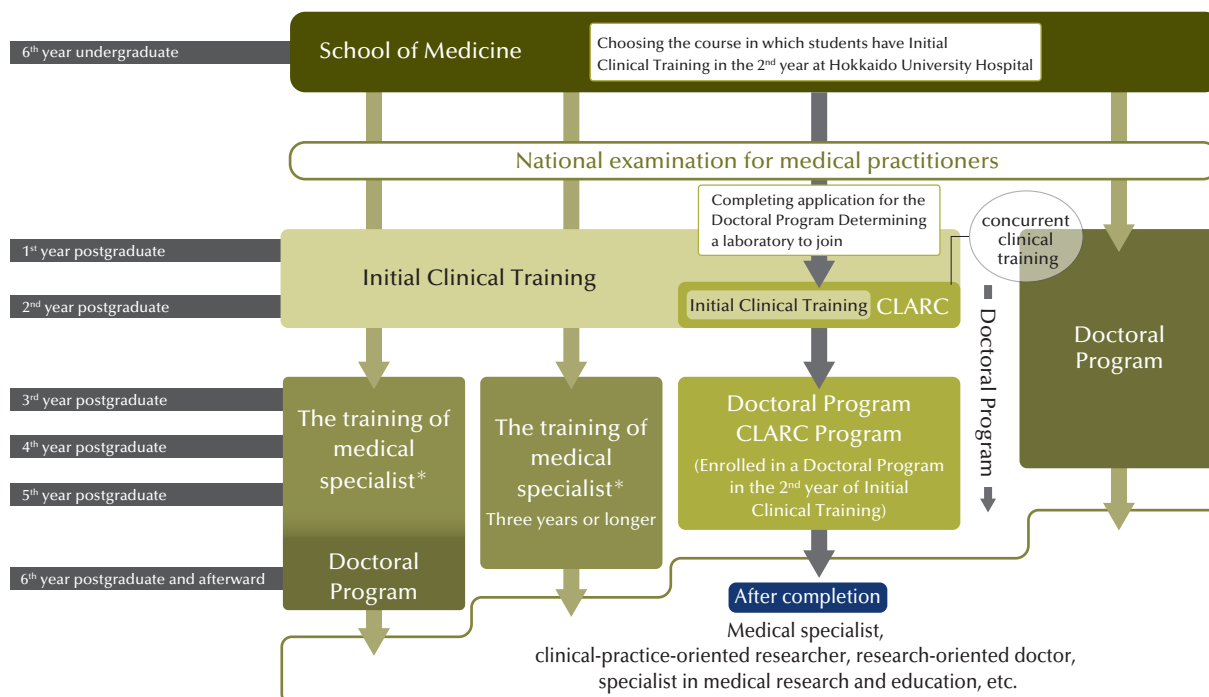
### Clinic And Research Combination

The CLARC Program allows students in the 2nd year of Clinical Training to enroll in the graduate school and pursue a doctoral degree while still undergoing clinical training.

The program focuses on providing a thorough clinical training; with lectures and research guidance conducted after 5 p.m. on weekdays. To join this program, students must choose a postgraduate clinical training course that requires clinical training in the student's

2<sup>nd</sup> year at Hokkaido University Hospital. During the period of training outside the university hospital, students are allowed to delay studies at the graduate school and concentrate on training in regional medical service activities (\*Coordination with other sections involved in the training is required.)

Student supervisors may be chosen from among faculty specializing in basic sciences.



\*Example of the training of medical specialist under the new medical specialist system (started in April 2018)

The period and details of training vary depending on the training program of medical specialist established for each of the basic fields (19 fields including internal medicine and surgery). Those wishing to be medical specialists are required to complete the training of medical specialist.





■ Scholarships available at the Hokkaido University Graduate School of Medicine are shown below

Information on the Honor and Scholarship			Detail	Master's Program	Doctoral Program
Honor	Graduate School of Medicine, Hokkaido University	Best Paper Award	Selected applicants receive a certificate and 100,000 yen.	○	○
		Takakuwa Eimatsu Scholarship	Every year, 4 or 5 outstanding young researchers (including graduate students) are awarded this scholarship (80,000–100,000 yen per awardee as a one-time grant).	○	○
		HIROKO International Academic Exchange Foundation	This fellowship grant was introduced for researchers who study cancer at overseas universities or research laboratories and return to Japan (applicants must be 35 years old or younger when applying). As a general rule, selected applicants receive 1,000,000 yen per person and up to 2 applicants are selected per year.	—	○
	Hokkaido University	Hokkaido University Ohtsuka Award	This award was introduced as a part of a gender equality project to assist outstanding female students who aspire to become researchers. Those eligible for the award are outstanding female students in the final year of the Doctoral Program who will complete the program during the said period (in principle, except for students who repeat a year). Selected applicants receive 300,000 yen.	—	○
Scholarship	Graduate School of Medicine, Hokkaido University	Otowa Hiroji Scholarship Fund	Both Japanese and non-Japanese students are eligible. Every year, up to 10 Japanese students and 10 non-Japanese students receive this scholarship (150,000 yen per awardee as a one-time grant). Selection is based on both academic and personal excellence.	○	○
		Students of the MD-PhD Program	Students will receive a non-refundable scholarship (covering the examination fee for the Doctoral Program, admission fee and 3 years' tuition for graduate school).	—	MD-PhD Program ○
	Hokkaido University	Nitobe College for Graduate Students	The Honors Program offers a scholarship to selected students. Successful applicants will be selected based on a comprehensive assessment that includes the academic achievement in the Foundation Program and their motivation for applying as described in the application form.	○	—
		Hokkaido University Ambitious Doctoral Fellowship (SDGs)	To help outstanding students work to achieve Sustainable Development Goals (SDGs), regardless of their research field, this program provides financial support (amount paid in FY 2022: 150,000 yen per month for support to devote time to research and an annual subsidy of 400,000 yen for research expenses).	—	○
		Hokkaido University DX Doctoral Fellowship	With the aim of developing Japan's science, technology, and innovation, and fostering outstanding doctoral students with the ability to creatively solve important issues and open up the future, this program provides selected applicants with a research incentive grant of 150,000 yen per month and an annual research grant of 400,000 yen (amount paid in FY 2022).	—	○
	Other Scholarships	Scholarships for Prospective Students	Several competitive scholarships of differing amounts are available for students wishing to study at Hokkaido University. Please see the sections below for the scholarships you can apply for prior to leaving your home country. · Japanese Government Scholarships (MEXT) · Hokkaido University Scholarships · Other Scholarships	○	○
		Scholarships for Current Students	There are various scholarships available to self-supported international students, and either applied for through the University, or directly.	○	○

■ The Graduate School of Medicine provides the following support measures to master's/doctoral students

Financial Support to Master's and Doctoral Students		Detail
Master's students	Teaching Assistant (TA) Program (Teaching Assistants in the School of Medicine)	As part of the university education, the TA program was introduced to train able faculty members and specialists with experience in education. Selected applicants are paid an annual salary of approximately 70,000 to 100,000 yen, depending on their work performance.
Students who pursue a doctorate after completing the Master's Program	Exemption of Admission fee, examination fee	Those who are expected to complete the Hokkaido University Master's Program and intend to take examinations for the Hokkaido University Graduate School of Medicine, or government-financed international students (persons receiving MEXT Scholarship grants) are exempted from this fee but must include a statement to this effect when submitting the application.
Doctoral students	Teaching Fellow (TF) Program (Teaching Assistants in the School of Medicine)	As one part of the graduate school education, this program aims to provide students in doctoral programs (who have experience of working as teaching assistants (TA)) with opportunities to be employed as teaching fellows (TF) and be responsible for teaching subjects mainly in the School of Medicine sharing the teaching with members of the faculty. Annual rewards vary depending on the subject they are put in charge of, and an annual stipend of approximately 80,000 to 120,000 yen is paid to such TF depending on their work performance.
	Teaching Assistant (TA) Program (Teaching Assistants in the School of Medicine)	This program aims to strengthen the university education by providing economic support for graduate students and offering training opportunities on the path to become faculty members and researchers. As teaching assistants (TA), students in this program engage in educational assistance work in subjects provided mainly in the School of Medicine. The annual rewards vary depending on the subject a TA is put in charge of, and an annual stipend of approximately 70,000 to 100,000 yen is paid to such TA depending on their work performance.
	Research Assistant (RA) Program (Research Assistants in the Faculty of Medicine)	The RA program was introduced to improve young researchers' research ability as well as to enhance the research environment by encouraging outstanding students in the Doctoral Program to participate in research projects as research assistants at the Faculty of Medicine. Selected applicants receive an annual salary of approximately 500,000 yen based on their work performance.
	Strategic Research Assistant (SRA) Program (Research Assistants in the Faculty of Medicine)	Doctoral students with outstanding research achievements have a chance to be employed as research assistants. Hours of employment depend on their research performance.
Students in the MD-PhD Program	The possibility of fixed-term employment as a specially appointed assistant professor	<p>A student who achieved outstanding research performance may be employed as a fixed-term, specially appointed assistant professor.</p> <ul style="list-style-type: none"> <li>• At least 2 research papers written in English with the student as the first author have been published or accepted for publication by the time of the completion of the MD-PhD Program, and</li> <li>• The total Impact Factor of the journal(s) publishing the 2 research papers is at least 5 (including those with a Total Impact Factor of 5 after rounding off), or</li> <li>• At least 1 research paper written in English with the student as the first author has been published or accepted for publication by a journal having an Impact Factor of at least 10.</li> </ul>



# Outline of School of Medicine Courses

## From Enrollment to Graduation

The 6-year period from enrollment in the school of medicine till graduation is divided into following four courses. Studies at the school of medicine start from acquiring a general wide view and converge to improving expertise. The details of each course are as follows.

### 1. Liberal Education Course for Medical Students

Medicine is a part of the natural sciences. However, physicians need a broad knowledge of their fellow human beings and a positive understanding attitude to interact with patients and their families who may have different ideas and values. This is why it is stated that “medicine is a part of the liberal arts field.”

In the 1<sup>st</sup> year of the study at the school of medicine, students are assigned to take courses in the general educational department. This is an important period where students cultivate and develop a broad outlook, build strong and deep human relationship, and lay the foundations for the study as medical student and for the all life study in general arts with students of other science faculties of the university.

The study of liberal arts and scientific subjects other than medicine may seem unrelated to the study of medicine; however they serve as a driving force enriching the imagination and creativity encouraging the development of the broad understanding of the world that is necessary to conduct research and provide medical care.

### 2. Basic Medicine Course

Illness is the state where the normal functioning of the body has changed and the understanding of illness is undergirded by an understanding of the normal state.

This course lasts 1 and a half years from the 1<sup>st</sup> semester of the 2<sup>nd</sup> year to the 1<sup>st</sup> semester of the 3<sup>rd</sup> year. Here the study starts from the normal structure and functions of the human body (anatomy, histology, imaging anatomy, physiology), and enables an understanding of biological phenomena from the molecular and gene level (biochemistry, pharmacology). Next, students are acquainted with the basic processes in which humans change from the normally functioning state to illness and diseases (microbiology, immunology, pathology, basic application of oncology).

Students also learn subjects classified in the category of social medicine that approaches the health and illness of humans from the viewpoints of interactions among groups of human, environmentally induced problems, societal structures, and prevention (hygieneology, public health study, forensic medicine).

All of the medically oriented specialty subjects that are introduced from the start of the Basic Medicine Course are required subjects and the syllabus is very concentrated.

### 3. Clinical Medicine Course

The Clinical Medicine Course offers study of the particulars of a variety of illnesses and diseases. Students study illnesses and diseases multi-dimensionally and learn the foundations of clinical medicine including internal medicine, surgery, and specialized medicine. Students acquire the basic skills necessary to understand disease conditions, laboratory findings, diagnosis, and medical treatment with a thorough understanding of patients as human

beings with emotions. This understanding is very important for the next step in the study, the Clinical Clerkship Course, where students will face actual patients.

The Clinical Medicine Course includes a 1-month medical research practicum, which functions as the introductory task for medical research. Here, students are assigned to work in a laboratory, to be researchers of basic medicine and research physicians learning experimental methods and ways of thinking.

At the end of the Clinical Medicine Course students have to take common achievement tests, CBT (computer based testing), which measures the knowledge and degree of comprehension, and Pre-CC OSCE (pre-clinical clerkship objective structured clinical examination), which measures skills in medical interviews (clinical history recording) and consultation. Students must pass these tests before they can proceed to the Clinical Clerkship Course.

### 4. Clinical Clerkship Course

This course is where the clinical clerkship starts.

In the second semester of the fourth year, students are assigned to different clinical departments in Hokkaido University Hospital and acquire practical skills based on the study that they have been exposed to in each of the previous courses while interacting with patients and medical staff in the clinical setting, the hospital. Along with this practical training, students review problems and questions they have become aware of through their training in united clinical lectures, and learn the basics of general practice skills. Training in social medicine is also conducted at this time.

For the 6 months of the 2<sup>nd</sup> semester of the 5<sup>th</sup> year, students must participate in 6 four-week clinical clerkship programs in core clinical departments at Hokkaido University Hospital and at outside medical institutions.

In the 1<sup>st</sup> semester of the 6<sup>th</sup> year, students must participate in 3 clinical attachments (4 weeks per clinical department or per field).

Before finishing the Clinical Clerkship Course, students must attend lectures in clinical pathology and interprofessional/simulation trainings. Through this training students acquire practical skills that will be useful after graduation.

At the end of this course, the Post-Clinical Clerkship Objective Structured Clinical Examination (Post-CC OSCE) is conducted as part of the graduation examination to evaluate clinical skills and attitudes. Students must then take the National Examination for Medical Practitioners, and will become registered physicians after they have passed this examination.

All the subjects of the specialized education of the school of medicine are required subjects. This is a clear difference from the requirements in other fields and faculties. The reasons for this requirement are the social demands on physicians, who are responsible for the lives of patients. Therefore, students are required to study all the subjects and basics that are required of a physician during the 6 years of the education in the faculty. This makes for a concentrated course.

# Cooperative Projects between Industry and Academia

The Faculty of Medicine is actively promoting cooperative projects between industry and academia.

A total of 149 joint research and consigned research programs were under way at the faculty of medicine in academic 2021.

## ■ Center to Support Industry-academia cooperative projects

The Research Center “Frate” was established to promote translational-research projects, from basic life science to clinical research, and to contribute to medical science, medical care, and the preservation of health. Currently, four research projects are in progress. The research activities of industry-academia cooperative projects and translational-research projects are also conducted here.

## ■ Number of Grants from Outside the University

Category	Fiscal Year									
	2012	2013	2014	2015	2016	2017	2018	2019	2020	2021
Joint Research	22	25	25	34	41	30	48	40	34	41
Consigned Research	40	54	93	124	115	98	105	88	113	108
<b>TOTAL</b>	<b>62</b>	<b>79</b>	<b>118</b>	<b>158</b>	<b>156</b>	<b>128</b>	<b>153</b>	<b>128</b>	<b>147</b>	<b>149</b>

## ■ Patents Owned by Juridical Persons, Etc. (Data as of April 1, 2022)

Patents Numbers based on lead inventor affiliation

Department	Patent Possession	
	Domestic	Overseas
Faculty of Medicine	18 (12)	25 (17)

(Breakdown of Overseas Patents)

Country/Region		Patent Possession
Asia	China	1 ( 1 )
	Korea	1 ( 0 )
Europe	France	4 ( 3 )
	Germany	5 ( 4 )
	Switzerland	1 ( 0 )
	United Kingdom	5 ( 4 )
North America	Canada	1 ( 1 )
	U.S.A.	7 ( 4 )
<b>TOTAL</b>		<b>25 (17)</b>

The number of joint applications indicated in parentheses ( ).

## ■ Employment/Hosting of Students and Postdoctoral Fellows (Fiscal Year 2022)

Category	Position	Number of Researchers
Research Fellowship for Young Scientists (JSPS)	DC1	1
	DC2	3
	PD	1
<b>TOTAL</b>		<b>5</b>





# Education and Research Programs (Amount granted: more than 10 million yen) Data as of July 1, 2022

MEXT: Ministry of Education, Culture, Sports, Science and Technology  
 METI: Ministry of Economy, Trade and Industry  
 JST: Japan Science and Technology Agency  
 AMED: Japan Agency for Medical Research and Development

## ■ Industry-Academia Joint Project of Human Resources Development for the Acceleration of AI Research Development in the Field of Healthcare (MEXT)

Funding Period	Partner Organizations	Project	Research Director
2020-2024	Tohoku University Hokkaido University Okayama University	Human Resources Development Program "Cutting Edge AI Research Development for the Solution of Global × Local Medical Problems"	KUDO Kohsuke, M.D., Ph.D. Professor, Department of Diagnostic Imaging

## ■ Strategic Basic Technology Upgrading Support Project (METI Hokkaido)

Funding Period	Project	Leader/R&D Chief
2020-2022	Development of automated stem cell culturing machine system for regenerative medicine against cerebral infarction	KAWABORI Masahito, M.D., Ph.D. Assistant Professor, Department of Neurosurgery

## ■ Grant-in-Aid for University Reform (MEXT)

Funding Period	Project	Leader/R&D Chief
2021-2022	Project to train medical personnel who can respond to new medical care in the With Corona era	TAKAHASHI Makoto, M.D., Ph.D. Professor, Center for Medical Education and International Relations

## ■ Activity in International Standardization in the Governmental Strategic Field (METI)

Funding Period	Project	Leader/R&D Chief
2020-2022	International Standardization Relating to the Data for the Prediction About Prognosis After Radiotherapy	SHIRATO Hiroki, M.D., Ph.D. Director, Global Center for Biomedical Science and Engineering

## ■ JST PRESTO

Funding Period	Program	Research Director
2021-2023	Inter-cell Interactions Responsible for Sleep and Hibernation	NORIMOTO Hiroaki, Ph.D. Associate Professor, Department of Cellular and Molecular Pharmacology

## ■ Advanced Research & Development Programs for Medical Innovation (AMED)

Funding Period	Program	Research Representative
2021-2026	Study of host cell membrane and ion dynamics during virus infection	OHBA Yusuke, M.D., Ph.D. Professor, Department of Cell Physiology

## ■ Practical Research Project for Rare/Intractable Diseases (AMED)

Funding Period	Program	Research Representative
2020-2022	Early MRI Diagnosis of Amyotrophic Lateral Sclerosis using Stable Isotope of Oxygen-17	KUDO Kohsuke, M.D., Ph.D. Professor, Department of Diagnostic Imaging
2020-2022	Elucidation of the Pathogenesis and Risk Factors of Bullous Pemphigoid	UJIE Hideyuki, M.D., Ph.D. Professor, Department of Dermatology
2021-2023	An Investigator-initiated Clinical Trial of Spinocerebellar Ataxia Type 1 (SCA1) Gene Therapy Based on Molecular Mechanisms	YABE Ichiro, M.D., Ph.D. Professor, Department of Neurology

## ■ Practical Research for Innovative Cancer Control (AMED)

Funding Period	Program	Research Representative
2020-2022	Establishment of Standard Therapy for Acute Lymphoblastic Leukemia in Children	MANABE Atsushi, M.D., Ph.D. Professor, Department of Pediatrics
2020-2022	The Development of New Treatment of Superselective Intra-Arterial Infusion of Cisplatin and Concomitant Radiotherapy for Patients with Locally Advanced Maxillary Sinus Cancer	HOMMA Akihiro, M.D., Ph.D. Professor, Department of Otolaryngology Head and Neck Surgery
2022-2024	A multi-institutional randomized phase III trial to confirm the superiority of pelvic and para-aortic lymphadenectomy over pelvic lymphadenectomy for endometrial cancer at risk of lymph node metastasis	WATARI Hidemichi, M.D., Ph.D. Professor, Department of Obstetrics and Gynecology

## ■ Research Program on Hepatitis / Program for Basic and Clinical Research on Hepatitis (AMED)

Funding Period	Program	Research Representative
2020-2022	Screening of Prognostic Biomarker by Comprehensive Serum and Liver Tissue Glycomics	SAKAMOTO Naoya, M.D., Ph.D. Professor, Department of Gastroenterology and Hepatology

## ■ Research Program on Hepatitis / Program on the Innovative Development and Application of New Drugs for Hepatitis B (AMED)

Funding Period	Program	Research Representative
2022-2024	High-throughput screening of antiviral seed compounds by using HBV cell culture and antiviral response reporter models	SAKAMOTO Naoya, M.D., Ph.D. Professor, Department of Gastroenterology and Hepatology
2022-2024	Development of genome-editing drugs of adenovirus vector expressing eight multiplex guide RNAs using models of HBV replication in humanized mice and of HBV carcinomas	FUKUHARA Takasuke, M.D., Ph.D. Professor, Department of Microbiology and Immunology
2022-2024	Study of the clinical significance of previous infection with HBV in HCC and the molecular mechanism of hepatocarcinogenesis in HBc antibody positive patients	TAKETOMI Akinobu, M.D., Ph.D. Professor, Department of Gastroenterological Surgery I

## ■ Project for Promotion of Cancer Research and Therapeutic Evolution (P-PROMOTE) (AMED)

Funding Period	Program	Research Representative
2022-2023	Development of hydrogel-based regulation of tumor heterogeneity for basis of novel cancer diagnosis and therapy	TANAKA Shinya, M.D., Ph.D. Professor, Department of Cancer Pathology

## ■ Japan Program for Infectious Diseases Research and Infrastructure (AMED)

Funding Period	Program	Research Representative
2020-2022	Elucidation of Properties and Evolutionary Mechanisms of Virome Involved in Progression of Pathogenesis	FUKUHARA Takasuke, M.D., Ph.D. Professor, Department of Microbiology and Immunology

## ■ Research Project for Practical Applications of Regenerative Medicine (AMED)

Funding Period	Program	Research Representative
2021-2023	Research for intracerebral transplantation of advanced interventional regenerative product made of bone marrow mesenchymal stem cells and recombinant scaffold against patient with chronic cerebral hemorrhage (RAINBOW-HX)	FUJIMURA Miki, M.D., Ph.D. Professor, Department of Neurosurgery
2022-2024	Exploratory clinical trial on the safety and capability of REC/dMD-001 in lumbar canal stenosis	SUDO Hideki, M.D., Ph.D. Specially Appointed Professor, Department of Advanced Medicine for Spine and Spinal Cord Disorders

### ■ Translational Research Program (AMED)

Funding Period	Program	Research Representative
2022-2023	Development of endoscopic novel sheet made of bioabsorbable material and hydrogel	ONO Masayoshi, M.D., Ph.D. Assistant Professor, Department of Gastroenterology and Hepatology

### ■ Medical Device Research and Development Programs Focused on Technology Transfers (AMED)

Funding Period	Program	Research Representative
2022-2024	Study of the development for new medical device program supporting automated diagnosis of frailty in elderly patients with heart failure	NAGAI Toshiyuki, M.D., Ph.D. Associate Professor, Department of Cardiovascular Medicine

### ■ Special Expenditures (MEXT)

Funding Period	Faculties	Project	Leader
2021-2025	Faculty of Medicine	Project for the Promotion of Cause of Death Investigation and Comprehensive Human Resources Development through Multi-disciplinary Collaboration	HATAKEYAMA Shigetsugu, M.D., Ph.D. Dean



# Autopsy Numbers

Data as of April 1, 2022

## ■ Systematic Autopsy

Classification	Year													
	2008	2009	2010	2011	2012	2013	2014	2015	2016	2017	2018	2019	2020	2021
Cadavers Used (Medicine)	40	65	40	40	43	45	43	41	38	38	37	37	33	37
Cadavers Used (Dentistry)	15	17	13	16	15	17	16	17	17	14	14	17	12	12
Cadaveric Anatomy and Surgical Training	-	-	-	-	-	-	-	-	3	10	16	14	10	10

## ■ Pathological Autopsy

Classification	Year													
	2008	2009	2010	2011	2012	2013	2014	2015	2016	2017	2018	2019	2020	2021
Pathological Autopsies	54	43	50	36	45	34	24	36	34	23	30	19	15	13

## ■ Medico-legal Autopsy

Classification	Year													
	2008	2009	2010	2011	2012	2013	2014	2015	2016	2017	2018	2019	2020	2021
Forensic Autopsies	129	119	135	193	152	132	351	282	300	419	368	299	369	377

# Record of Postmortem imaging

Data as of April 1, 2022

Category		Fiscal Year				
		2017	2018	2019	2020	2021
Number of CT scans	Unnatural death under forensic medicine	762	951	965	845	1,137
	Cases of natural death in hospitals	18	12	12	9	10
TOTAL		780	963	977	854	1,147



History

Philosophy and Objectives

Past and Present Deans and Directors

Professors Emeriti

Honor Roll

Organizations / Finances

Students

International Affairs

Endowed Depts. and Industry Creation Depts.

Education and Research System

Campus



# Lands and Buildings

Data as of July 1, 2022

## ■ Lands

Classification	Total Area (m <sup>2</sup> )
Area Used (Faculty of Medicine, Graduate School of Medicine, School of Medicine)	39,418
Charnel (4, 15, 3-19, Hiragishi, Toyohira-ku, Sapporo)	160
Medical zone	151,814

## ■ Buildings (Source: a drawing based on an actual survey by the Facilities Department)

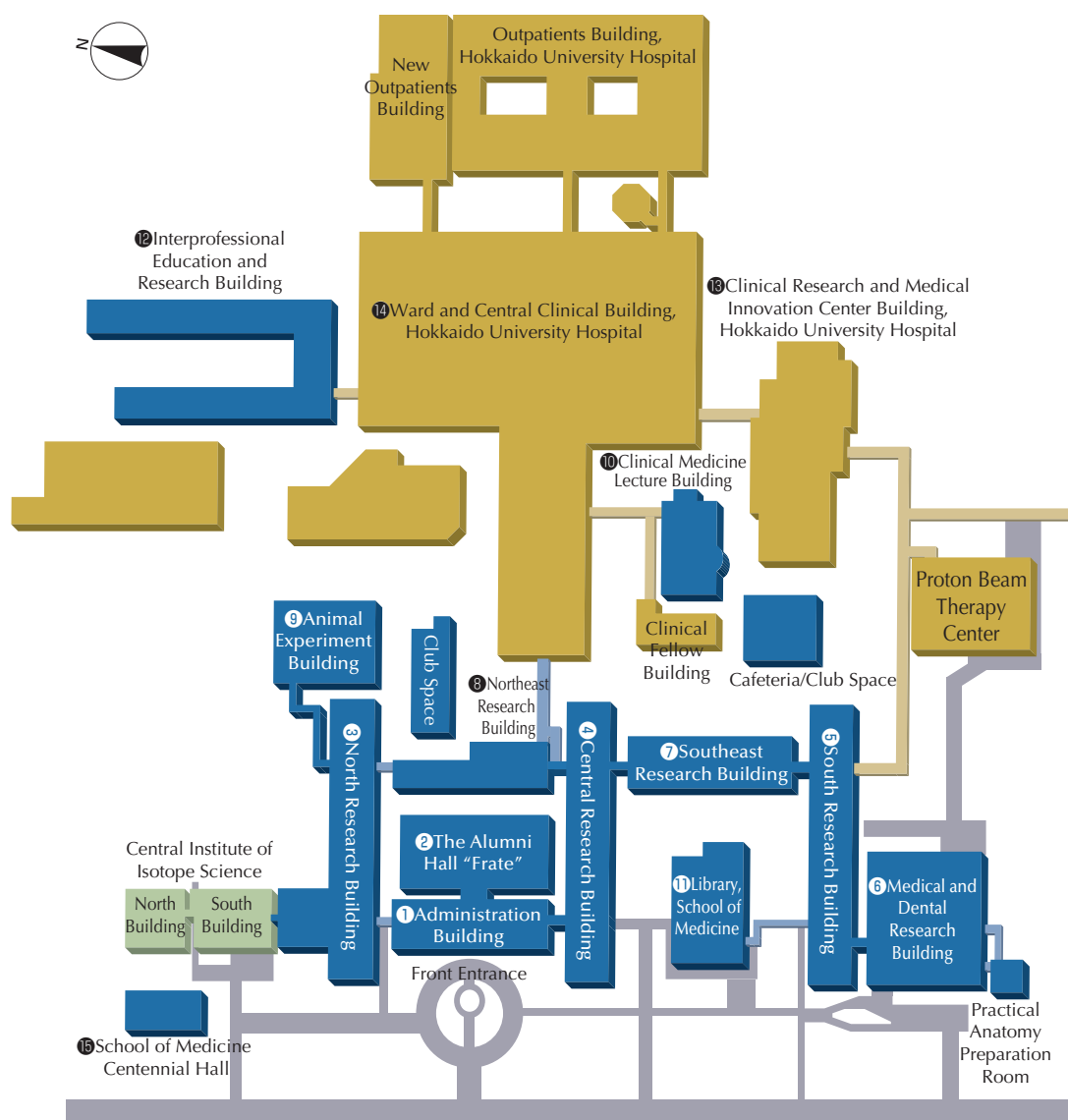
Name of Building	Building Area (m <sup>2</sup> )	Total Area (m <sup>2</sup> )
Administration Building	839	1,623
The Alumni Hall "Frate"	1,086	2,174
North Research Building	1,482	1,728* <sup>1</sup>
Central Research Building	1,113	5,979
South Research Building	1,175	5,928
Southeast Research Building	840	4,272
Northeast Research Building	558	3,239* <sup>2</sup>
Medicine and Dental Research Building	1,661	12,574

Name of Building	Building Area (m <sup>2</sup> )	Total Area (m <sup>2</sup> )
Institute for Animal Experimentation	899	5,040
Library, School of Medicine	486	2,600
Clinical Medicine Lecture Building	625	1,277
Club Space	373	373
Cafeteria	460	460
Interprofessional Education and Research Building	1,662	6,198
School of Medicine Centennial Hall	638	744
Other	359	355
<b>Total</b>	<b>14,256</b>	<b>54,564</b>

\*<sup>1</sup> Out of the Area 5,725m<sup>2</sup> used by Institute for Genetic Medicine

\*<sup>2</sup> Out of the Area 179m<sup>2</sup> used by Graduate School of Biomedical Science and Engineering

## Building Layout



# Building / Floor Overview

Data as of November 1, 2022

\*Endowed Departments

## ① Administration Building

1F	Administration Office Medium Conference Room
2F	2-1 Common Seminar Room 2-2 Common Seminar Room 2-3 Common Seminar Room

## ② The Alumni Hall “Frate”

1F	Multipurpose Room / Hall
2F	Executive Conference Room / Hall

## ③ North Research Building

1F	Medical Chemistry Molecular Biology
2F	Anatomy and Embryology Histology and Cytology Biomedical Oncology
3F	Immunobiology Molecular Psychoimmunology Stem Cell Biology
4F	Biological Molecular Mechanisms
5F	Functional Immunology

## ④ Central Research Building

1F	Neurology Cardiovascular Surgery Center for Medical Education and International Relations ① Medical Education and General Medicine
2F	Public Health Health Care Policy Hygiene
3F	Forensic Medicine Immunology Center for Medical Education and International Relations ② 3-1 Common Seminar Room
4F	Cancer Pathology Pathology Global Center for Biomedical Science and Engineering
5F	Systems Neuroscience Cell Physiology Biostatistics 5-1 Common Seminar Room 5-2 Common Seminar Room

## ⑤ South Research Building

1F	Obstetrics and Gynecology ② Otolaryngology-Head and Neck Surgery
2F	Gastroenterology and Hepatology Anesthesia and Perioperative Medicine Pediatrics
3F	Neurosurgery Ophthalmology Ocular Circulation and Metabolism * Dermatology
4F	Renal and Genitourinary Surgery Obstetrics and Gynecology ① Orthopedic Surgery ②
5F	Gastroenterological Surgery I Transplant Surgery * Gastroenterological Surgery II Orthopedic Surgery ①

## ⑥ Medical and Dental Research Building

B1, 2, 6F	Core Research Facility
1F	Center for Cause of Death Investigation ①
7-8F	Experimental Animals

## ⑦ Southeast Research Building

1F	Radiation Oncology Diagnostic Imaging
2F	Acute and Critical Care Medicine Respiratory Medicine
3F	Psychiatry Rheumatology, Endocrinology and Nephrology
4F	Cardiovascular Medicine Plastic and Reconstructive Surgery
5F	Neuropharmacology Cellular and Molecular Pharmacology

## ⑧ Northeast Research Building

1F	Medical Oncology Regulatory Science
2F	Hematology
3F	Microbiology and Infectious Diseases Center for Cause of Death Investigation ②
5F	Neurobiology Advanced Medicine for Spine and Spinal Cord Disorders * Technical Support Office

## ⑨ Animal Experiment Building

B1-5F	Institute for Animal Experimentation
-------	--------------------------------------

## ⑩ Clinical Medicine Lecture Building

1F	Lecture Room III Lecture Room IV
2F	Amphitheater

## ⑪ Library, School of Medicine

3F	Lecture Room I Lecture Room II
----	-----------------------------------

## ⑫ Interprofessional Education and Research Building

East Bldg. 1F	Medical Innovation Center ②
2-3F	Clinical Simulation Center
3-4F	Medical Innovation Center ①
5F	Seminar Room
West Bldg. 2-3F	Space for Undergraduate Medical Students and Others

## ⑬ Clinical Research and Medical Innovation Center Building, Hokkaido University Hospital

3F	Breast Surgery Rehabilitation Medicine Thoracic Surgery
----	---

## ⑭ Ward and Central Clinical Building, Hokkaido University Hospital

2F	Molecular and Diagnostic Pathology
----	------------------------------------

## ⑮ School of Medicine Centennial Hall

1F	Alumni Association Office / foyer / Large Conference Room
2F	Multipurpose Hall / Small Conference Room

## Northern Campus Building No. 2

History

Philosophy and Objectives

Past and Present Deans and Directors

Professors Emeriti

Honor Roll

Organizations / Finances

Students

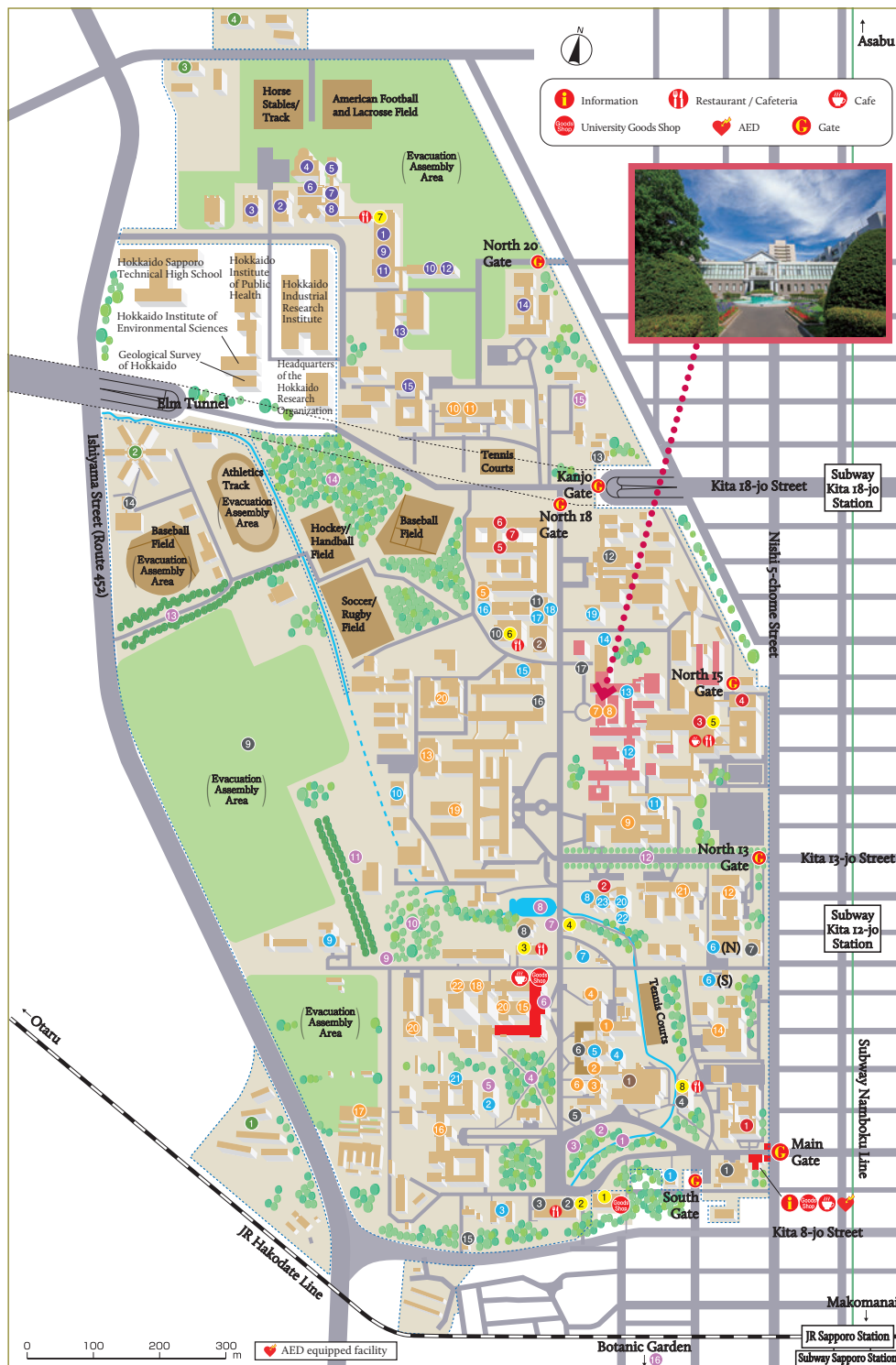
International Affairs

Endowed Depts. and Industry Creation Depts.

Education and Research System

Campus

# Map of Sapporo Campus



## University Organization

- 1 Administration Bureau
- 2 Office of Diversity, Equity, and Inclusion
- 3 Hokkaido University Hospital
- 4 Dental Clinical Division of Hokkaido University Hospital
- 5 Admission Center
- 6 Institute for the Advancement of Higher Education
- 7 Institute for the Advancement of Graduate Education

## Graduate Schools, Faculties and Schools

- 1 Graduate School of Humanities and Human Sciences
- 2 Graduate School of Law
- 3 Graduate School of Economics and Business
- 4 Graduate School of Education
- 5 Graduate School of International Media, Communication, and Tourism Studies
- 6 Graduate School of Public Policy
- 7 Graduate School of Medicine
- 8 Graduate School of Biomedical Science and Engineering
- 9 Graduate School of Dental Medicine
- 10 Graduate School of Veterinary Medicine
- 11 Graduate School of Infectious Diseases
- 12 Graduate School of Health Sciences
- 13 Graduate School of Information Science and Technology

- 14 Graduate School of Environmental Science
  - 15 Graduate School of Science
  - 16 Graduate School of Agriculture
  - 17 Graduate School of Global Food Resources
  - 18 Graduate School of Life Science
  - 19 Graduate School of Engineering
  - 20 Graduate School of Chemical Sciences and Engineering
  - 21 Faculty of Pharmaceutical Sciences
  - 22 Faculty of Advanced Life Science
- Note: The Graduate School of Fisheries Sciences is located at Hakodate Campus

## Research Institutes & Centers

- 1 Center for Ainu & Indigenous Studies
- 2 Hokkaido University Press
- 3 Hokkaido University Archives
- 4 Slavic-Eurasian Research Center
- 5 Center for Experimental Research in Social Sciences
- 6 Information Initiative Center North/South Bldgs.
- 7 Archaeological Research Center
- 8 Center for Environmental and Health Sciences
- 9 Field Science Center for Northern Biosphere
- 10 Research Center for Integrated Quantum Electronics
- 11 Proton Beam Therapy Center

- 12 Research and Education Center for Brain Science
- 13 Institute for Genetic Medicine
- 14 Central Institute of Isotope Science
- 15 Frontier Research in Applied Sciences Bldg.
- 16 Center for Language Learning
- 17 Center for Advanced Tourism Studies
- 18 The Open University of Japan; Hokkaido Study Center
- 19 Health Care Center
- 20 Education and Research Center for Mathematical and Data Science
- 21 Center for Natural Hazards Research
- 22 Center for Human Nature, Artificial Intelligence, and Neuroscience (CHAIN)
- 23 Center for Advanced Human Resource Education and Development, Institute for the Advancement of Graduate Education

## Research Institutes/Centers (North Campus Area)

- 1 Creative Research Institution (CRIS)
- 2 Center for Innovation and Business Promotion, Institute for the Promotion of Business-Regional Collaboration
- 3 Hokkaido Collaboration Center
- 4 Social and Regional Emergence Department, Institute for the Promotion of Business-Regional Collaboration
- 5 Shionogi Innovation Center for Drug Discovery
- 6 Platform for Research on Biofunctional Molecules (PRBM)
- 7 Frontier Research Center for Advanced Material and Life Science
- 8 Arctic Research Center
- 9 Institute for Catalysis
- 10 Research Institute for Electronic Science
- 11 Green Nanotechnology Research Center
- 12 Research Center of Mathematics for Social Creativity
- 13 International Institute for Zoonosis Control
- 14 Institute of Low Temperature Science
- 15 Veterinary Teaching Hospital

## Facilities

- 1 Conference Hall
- 2 Clark Memorial Student Center
- 3 Career Center
- 4 Centennial Hall
- 5 Furukawa Hall
- 6 Humanities and Social Sciences Classroom Building
- 7 "Kodomo No Sono" Child Care Center
- 8 Faculty House Trillium
- 9 Experiment Farm
- 10 Student Services
- 11 Multimedia Education Building
- 12 Gym
- 13 Enyu Gakusha Community Hall
- 14 Sports Training Center
- 15 "Tomoni" Child Care Center
- 16 Student Communication Station
- 17 School of Medicine Centennial Hall

## Libraries

- 1 Central Library
- 2 North Library

## Dorms

- 1 Hokkaido University International House Kita 8 (Kita 8 Nishi 11)
- 2 Keiteki-Ryo Student Dormitory (Kita 18 Nishi 13)
- 3 Hokkaido University International House Kita 23 (Kita 23 Nishi 13)
- 4 Foreign Scholars' Accommodation (Kita 24 Nishi 12)

## Tourist Spots

- 1 Sakushukotoni River
- 2 Central Lawn
- 3 Bust of Dr. William S. Clark
- 4 Elm Grove
- 5 Former School of Agriculture Library
- 6 The Hokkaido University Museum
- 7 Monument to First Artificial Snow Crystal
- 8 Ono Pond
- 9 Monument in Honor of Dr. Inazo Nitobe
- 10 Flowering Tree Garden
- 11 Poplar Avenue
- 12 Gingko Avenue
- 13 Heisei Poplar Avenue
- 14 Site of Old Village
- 15 The Second Farm (Model Barn)
- 16 Botanic Garden

## Cafeterias/Restaurants/Stores

- 1 Information Center "Elm Forest Shop"
- 2 Hokkaido University (HU) Co-op
- 3 Clark Cafeteria
- 4 Chuo Cafeteria, HU Co-op
- 5 Seicomart
- 6 Restaurant Royal
- 7 Hokubu Cafeteria, HU Co-op
- 8 Restaurant Poplar
- 9 Hokudai Marche Café and Labo

## Information Center "Elm Forest Shop"

The University Information Center is located just inside the main gates of Sapporo Campus. Visitors can browse information regarding campus events as well as enjoy refreshments on the outdoor patio. The Center also carries original Hokkaido University merchandise.

**Opening hours:**  
8:30-17:00

**Closed:**  
December 29-January 3



# Access to Sapporo Campus

■ Overseas Satellite Offices (HU)

Data as of July 2022



- ① Korea Office in Seoul
- ② China Office in Beijing
- ③ Hokkaido University & VNU University of Science Joint Office
- ④ North America Office in Portland
- ⑤ Europe Office in Helsinki
- ⑥ Russia Office in Moscow
- ⑦ Africa Office in Lusaka
- ⑧ Liaison Office in Thailand
- ⑨ Liaison Office in Indonesia
- ⑩ Liaison Office in Philippines
- ⑪ Liaison Office in Beijing China

## Access

### J R

- JR Sapporo Station: 20-min. walk

### Subway

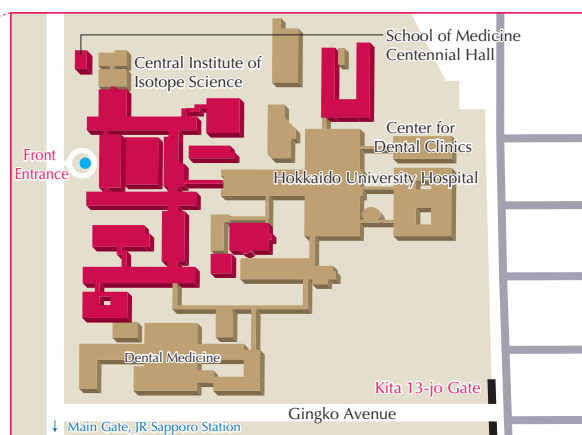
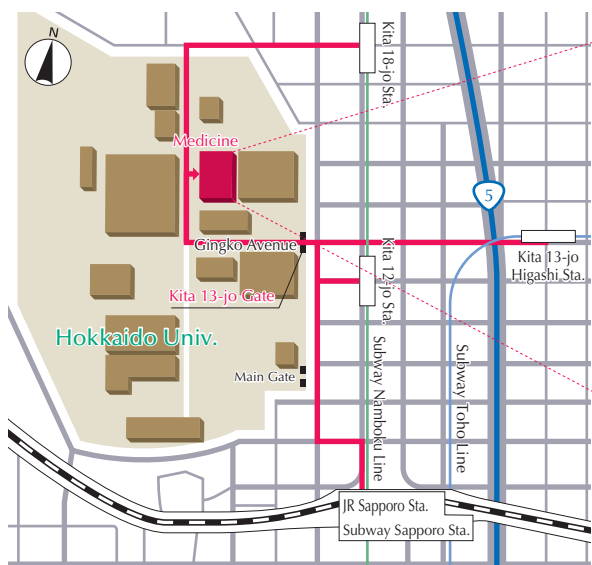
- Kita 12-jo Sta. (Namboku Line): 10-min. walk
- Kita 18-jo Sta. (Namboku Line): 10-min. walk
- Kita 13-jo Higashi Sta. (Tōhō Line): 15-min. walk

### Bus

- Hokudai Byouin Mae (in front of Hokkaido University Hospital): 3-min. walk  
Take a bus, number 01, 03, or 04 of the Tonden line of Chuo Bus Co. at the Kitaguchi bus depot of JR Sapporo Station

### New Chitose Airport to JR Sapporo Station

- 40-min. by JR
- 80-min. by bus



## Access inside the campus

After passing the Kita 13-jo Gate, walk along Gingko Avenue, turn right at the T-junction and proceed to the traffic circle with the fountain. Go to the reception in the Administration Building there.



In 2019 Hokkaido University,  
School of Medicine celebrated  
the 100th anniversary  
from its establishment.



**HOKKAIDO UNIVERSITY**  
**Faculty of Medicine**  
**Graduate School of Medicine**  
**School of Medicine**

Kita 15, Nishi 7, Kita-ku, Sapporo, Hokkaido 060-8638, Japan

Tel: +81-(0)11-716-2111

Fax: +81-(0)11-717-5286

<https://www.med.hokudai.ac.jp/en/>



hokudai univ med

Search

