

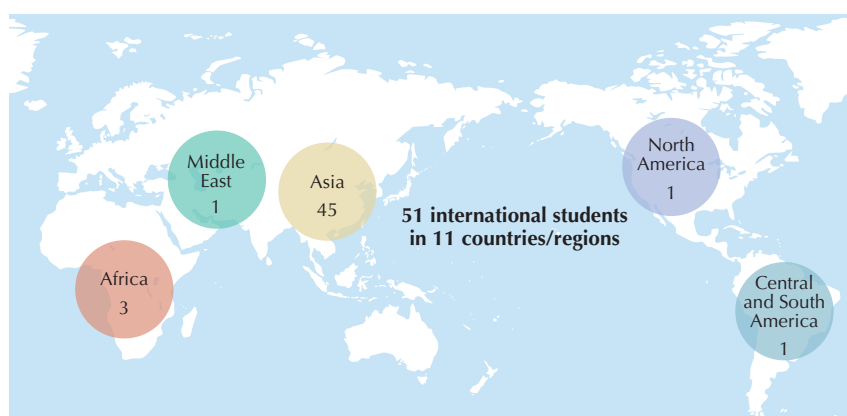
# Number of International Students

Data as of May 1, 2021

## Distribution by Country/Region

Area	Country/Region	Number
Asia 45 students 88.24%	Bangladesh	1
	China	37
	India	1
	Korea	2
	Malaysia	1
	Taiwan	2
	Vietnam	1
North America 1 student 1.96%	U.S.A.	1

Area	Country/Region	Number
Central and South America 1 student 1.96%	Argentine	1
Middle East 1 student 1.96%	Afghanistan	1
Africa 3 students 5.88%	Egypt	3
TOTAL		51
International Students (Other visa status)		9



## Distribution within Graduate School/Faculty/School of Medicine

( ): number of female students included

Undergraduate	Graduate		Research Student	Special Research Student	Special Audit Student	Total of Int'l Students	Total of Int'l Students (Other visa status)	TOTAL (All International Students)
	Master's Program	Doctoral Program						
0	5 ( 2)	42 (25)	3 ( 1)	1 ( 1)	0	51 (29)	9 ( 6)	60 (35)

## Methods of Financial Support

( ): number of female students included

	Undergraduate	Graduate	Other	TOTAL
Japanese government	0	8 ( 6)	0	8 ( 6)
Self-Supported	0	37 (19)	4 ( 2)	41 (21)
Foreign government	0	2 ( 2)	0	2 ( 2)
TOTAL	0	47 (27)	4 ( 2)	51 (29)
International Students (Other visa status)	5 ( 3)	4 ( 3)	0	9 ( 6)
<b>GRAND TOTAL (All International Students)</b>	<b>5 ( 3)</b>	<b>51 (30)</b>	<b>4 ( 2)</b>	<b>60 (35)</b>

## Overseas Researchers Hosted (academic 2020)

Classification	Area	Country/Region	Number
Visiting Overseas Researchers			0
Bilateral Programs (JSPS)	Europe	Belgium	1
Invitation Fellowships for Research in Japan (JSPS)	Asia	India	1
TOTAL			2